



**Different** Power Solutions



At Tecnoware we have been designing and creating Products and Solutions for the *electric continuity of Individuals, Businesses and Industries since 1986*, using the most advanced technologies in compliance with the Environment and Safety.

Building fruitful relationships with our *Partners*, is the core of our *Company Mission*, guaranteeing mutual growth and the continuous improvement of the *professionalism* of our services and the *quality of our products*.

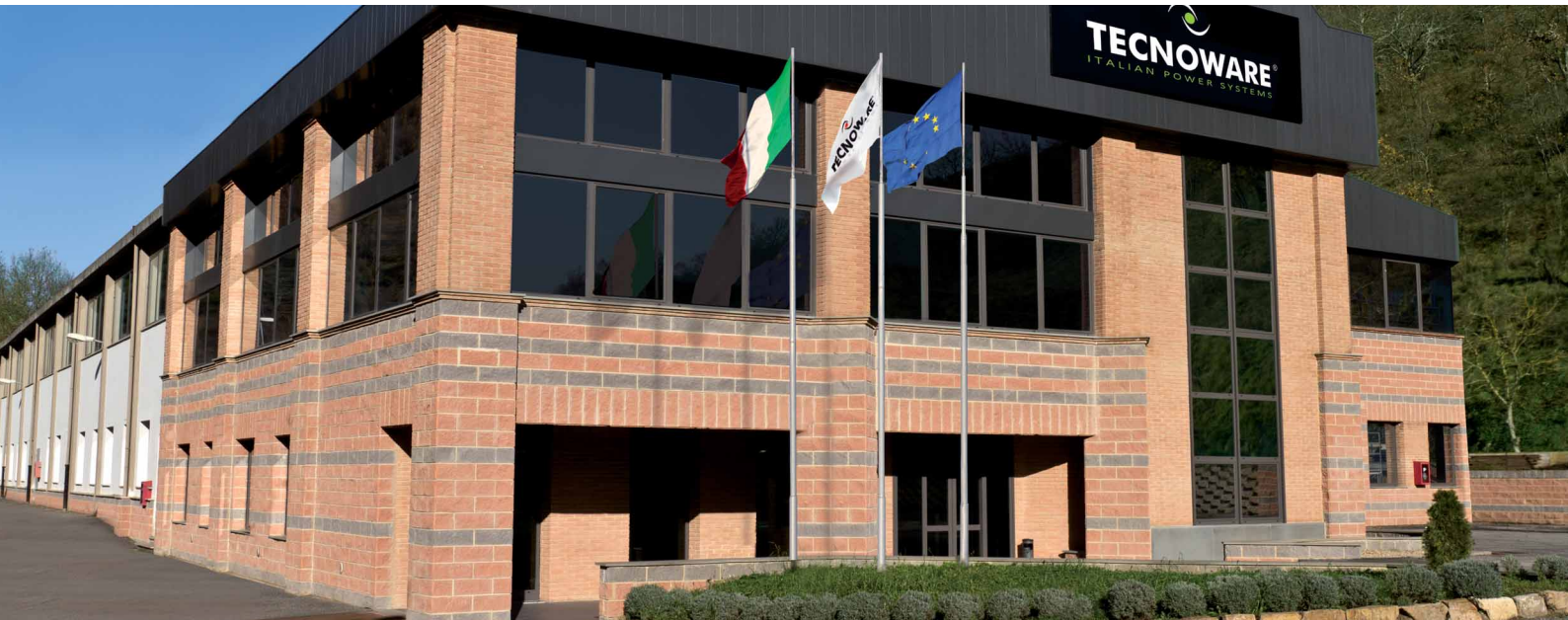
At Tecnoware we invest in training our *Employees*, recognising that the quality of the work and the customer satisfaction depend on the *Company's Well-being*.

Tecnowares *Environmental Sensitivity* has translated in the so-called "*Together On*" philosophy, which motivates, pushes and inspires our Stakeholders towards more and more Eco sustainable choices.

The enthusiasm and commitment of our company increase together with our successes and strengthen *the loyalty to the values* which conquered the confidence of our Partners during our Corporate History.

# ITALIAN QUALITY IN THE WORLD

Tecnoware has been manufacturing UPS for private individuals, companies and industry **since 1986**.



*Together on*

Together On Philosophy: High **efficiency**, 100% materials **Recyclable**, **Sustainable** Development Projects.

Over 70 controls and use of **components first choice** to guarantee products up to 5 years



Branches and Partners in  
**50 Countries in the World.**

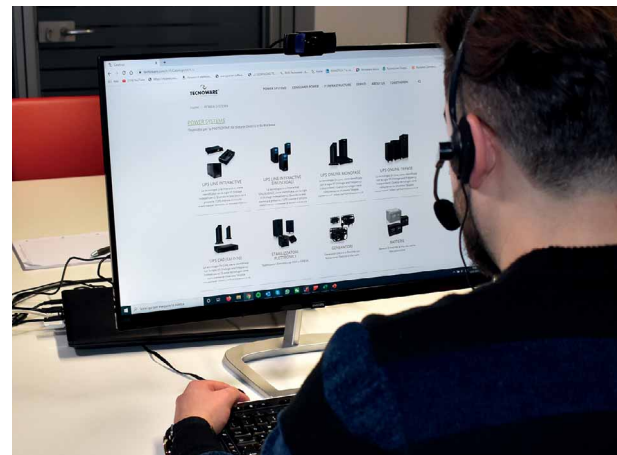


# PARTNERS AT THE CENTER

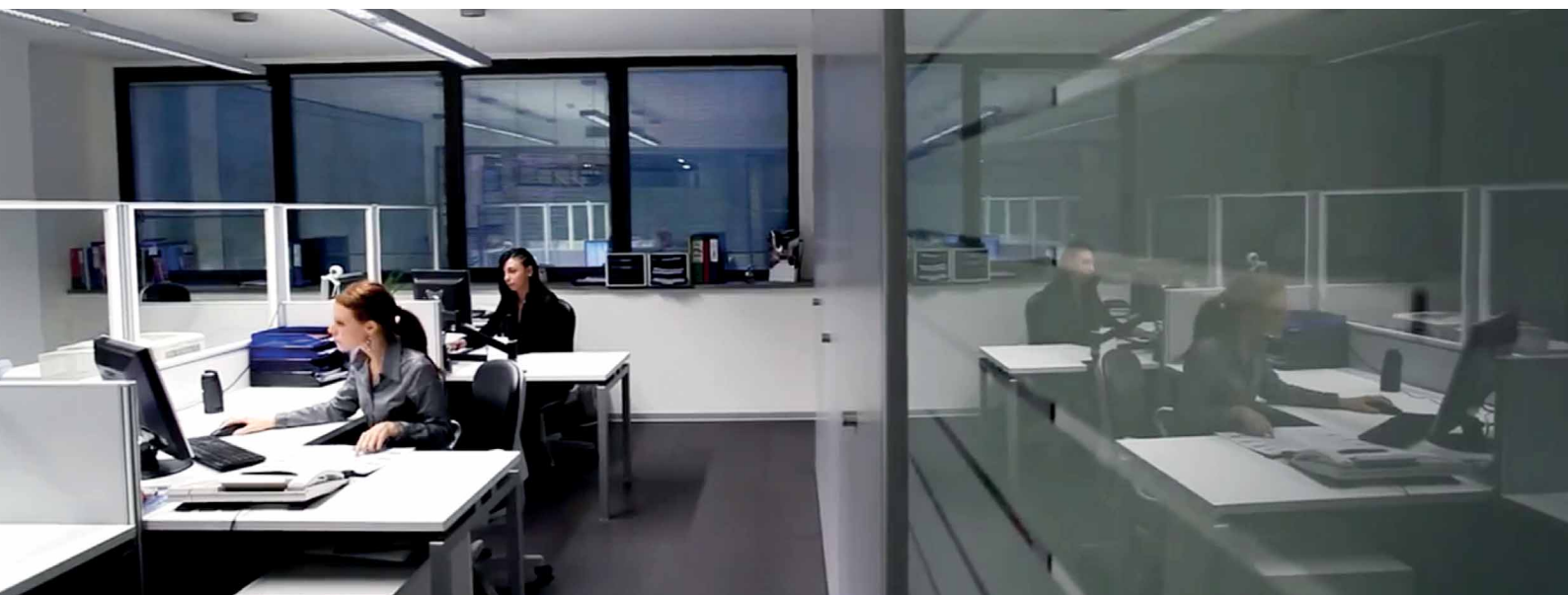


Training, Webinar,  
Digital Communication and Events.

Personal Configurator Service:  
a Partner support through  
guided configurations by our professionals.

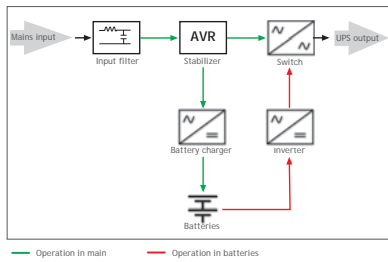


24/7 Technical / Commercial Support, Shipping in 24 hours,  
Configurations in 30 minutes and Installations and maintenance On-site.



## UPS Technology

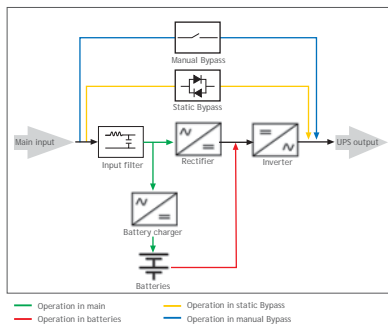
According to the standard regulation: IEC 62040-3, UPS are classified and identified as follows:



### Line Interactive (VI)

The Line Interactive, Technology is identified with the initials: VI (Voltage Independent). This means that while operating in Mains the UPS output frequency is dependent on the input frequency while the voltage is handled by the UPS. It is in fact through the stabilizer circuit that these UPS are able to protect the connected equipment from persistent voltage disturbances such as overvoltage, and Blackout.

These include the: Era PLUS Strip, Era PLUS, Era PLUS Active, Era PLUS RM and Exa PLUS.



### On Line (VFI)

The On Line Technology is identified with the initials: VFI (Voltage and Frequency Independent). This technology is commonly called "double conversion". During operations in mains, the UPS output is fed through the rectifier which converts the UPS input voltage from alternated to continuous voltage, in conjunction with the inverter which transforms again the continuous voltage into alternated voltage. This system permits to output voltage to be perfectly sinusoidal, clean and very stable in voltage and frequency, apart from problems present in the mains.

These include the: Evo DSP PLUS and EVO DSP PLUS Modular.

## Electric phenomenon and solutions

| UPS   | Blackout | Dynamic Undervoltage | Dynamic Overvoltage | Undervoltage | Overvoltage | Lightning (adding a discharger upstream) | Voltage Surge | Frequency Variation | Voltage Distortion | Voltage Harmonic |
|---|----------|----------------------|---------------------|--------------|-------------|--|---------------|---------------------|--------------------|------------------|
| Era PLUS DC - USB 5VDC 2A, USB-C OUTPUT 5V/9V/12V/15V/20V           |          |                      |                     |              |             |  |               |                     |                    |                  |
| Era Plus DC 9 Vdc/12 Vdc - POE 24Vdc/48Vdc - USB 5Vdc               |          |                      |                     |              |             |  |               |                     |                    |                  |
| Era Plus Strip 1.000 (VI)   |          |                      |                     |              |             |  |               |                     |                    |                  |
| Era Plus RM 1.200 (VI)  |          |                      |                     |              |             |  |               |                     |                    |                  |
| Era Plus 600-800-950-1.200-1.600-2.100-2.600 (VI)                   |          |                      |                     |              |             |  |               |                     |                    |                  |
| Era Plus Active 1.200-1.600 (VI)                                    |          |                      |                     |              |             |  |               |                     |                    |                  |
| Exa Plus 1.100-1.600-2.100-3.000-4.500 (VI)                         |          |                      |                     |              |             |  |               |                     |                    |                  |
| Evo DSP Plus 1.200-2.400-3.600-5.500 PF 0,9 (VFI)                   |          |                      |                     |              |             |  |               |                     |                    |                  |
| Evo DSP Plus 1.200-2.400-3.600 Rack Tower PF 0,9 (VFI)              |          |                      |                     |              |             |  |               |                     |                    |                  |
| Evo DSP Plus 6.0-10.0 PF 1 (VFI)                                    |          |                      |                     |              |             |  |               |                     |                    |                  |
| Evo DSP Plus 6.0-10.0 Rack Mount PF 1 (VFI)                         |          |                      |                     |              |             |  |               |                     |                    |                  |
| Evo DSP Plus Modular 20.0-300.0 400 Vac PF 1 (VFI)                  |          |                      |                     |              |             |  |               |                     |                    |                  |
| Evo DSP Plus Modular 20.0-140.0 208 Vac PF 1 (VFI)                  |          |                      |                     |              |             |  |               |                     |                    |                  |
| Evo DSP Plus Modular 70.0-700.0 480 Vac PF 1 (VFI)                  |          |                      |                     |              |             |  |               |                     |                    |                  |
| Evo DSP Plus TM 10.0-20.0 PF 1 (VFI)                                |          |                      |                     |              |             |  |               |                     |                    |                  |
| Evo DSP Plus TT 10.0-20.0-30.0 PF 1 (VFI)                           |          |                      |                     |              |             |  |               |                     |                    |                  |
| Evo DSP Plus TT 40.0-60.0 PF 1 (VFI)                                |          |                      |                     |              |             |  |               |                     |                    |                  |
| Evo DSP Plus TT 80.0-100.0-120.0-160.0-200.0-240.0-300.0 PF 1 (VFI) |          |                      |                     |              |             |  |               |                     |                    |                  |

# SUMMARY

## UPS

|  |      |    |
|--|------|----|
| UPS Era PLUS DC - USB 5VDC 2A, USB-C OUTPUT 5V/9V/12V/15V/20V <i>Together on</i> <b>NEW</b>            | Pag. | 8  |
| UPS Era Plus DC 9VDC/12VDC - POE 24VDC/48VDC - USB 5VDC <i>Together on</i>                             | Pag. | 9  |
| <b>Line Interactive (VI)</b>   |      |    |
| UPS Era Plus Strip 1.000 <i>Together on</i>  | Pag. | 10 |
| UPS Era Plus 1.200 Rack Mount <i>Together on</i>   | Pag. | 11 |
| UPS Era Plus 600-800-950-1.200-1.600 <i>Together on</i>  | Pag. | 12 |
| UPS Era Plus 2.100-2.600 <i>Together on</i>  | Pag. | 14 |
| UPS Era Plus Active 1.200-1.600 <i>Together on</i>   | Pag. | 16 |
| <b>Line Interactive Sinewave (VI)</b>  |      |    |
| UPS Exa Plus 1.100-1.600-2.100 <i>Together on</i>  | Pag. | 17 |
| UPS Exa Plus 3.000-4.500 <i>Together on</i>  | Pag. | 18 |
| <b>On Line (VFI)</b>   |      |    |
| UPS Evo DSP Plus 1.20 0-2.400-3.600-5.500 <b>PF 0,9</b> <i>Together on</i>                             | Pag. | 20 |
| UPS Evo DSP Plus 1.200-2.400-3.600 Rack Tower <b>PF 0,9</b>  | Pag. | 22 |
| UPS Evo DSP Plus 6.0-10.0 <b>PF 1</b> <i>Together on</i> <b>NEW</b>                                    | Pag. | 24 |
| UPS Evo DSP Plus 6.0-10.0 Rack Mount <b>PF 1</b> <i>Together on</i> <b>NEW</b>                         | Pag. | 26 |
| UPS Evo DSP Plus Modular 20.0-300.0 400 Vac <b>PF 1</b> <i>Together on</i>                             | Pag. | 28 |
| UPS Evo DSP Plus Modular 20.0-140.0 208 Vac <b>PF 1</b> <i>Together on</i> <b>NEW</b>                  | Pag. | 30 |
| UPS Evo DSP Plus Modular 70.0-700.0 480 Vac <b>PF 1</b> <i>Together on</i> <b>NEW</b>                  | Pag. | 32 |
| UPS Evo DSP Plus TM 10.0-20.0 <b>PF 1</b> <i>Together on</i> <b>NEW</b>                                | Pag. | 34 |
| UPS Evo DSP Plus TT 10.0-20.0-30.0 <b>PF 1</b> <i>Together on</i> <b>NEW</b>                           | Pag. | 36 |
| UPS Evo DSP Plus TT 40.0-60.0 <b>PF 1</b> <i>Together on</i> <b>NEW</b>                                | Pag. | 38 |
| UPS Evo DSP Plus TT 80.0-100.0-120.0-160.0-200.0-240.0-300.0 <b>PF 1</b> <i>Together on</i> <b>NEW</b> | Pag. | 40 |
| UPS Evo DSP Plus TT 10-20 208 Vac <b>PF 1</b> <i>Together on</i> <b>NEW</b>                            | Pag. | 42 |
| UPS Evo DSP Plus TT 30-40 208 Vac <b>PF 1</b> <i>Together on</i> <b>NEW</b>                            | Pag. | 43 |

## UPS Accessories

|  |      |    |
|--|------|----|
| ATS (Automatic Transfer Switch) 16-30A         | Page | 44 |
| Power Battery 12V 5Ah-7.2Ah-9Ah-54W <b>NEW</b> | Pag. | 45 |

## Software and communication interfaces

Page 46

## Stabilizers

|   |      |    |
|---|------|----|
| Stabilizers Power Reg 1.000 <i>Together on</i>  | Page | 48 |
| Stabilizers Power Reg 2.000-3.000 <i>Together on</i>  | Pag  | 49 |
| Single-Phase stabilizers with electronic control 4.5-18 <i>Together on</i>                          | Page | 50 |
| Three-Phase stabilizers with electronic control 9-100 <i>Together on</i>                            | Page | 51 |
| Bidirectional Single-Phase stabilizers with electronic control 7.5-10 <i>Together on</i> <b>NEW</b> | Page | 52 |

## Generator

|   |      |    |
|---|------|----|
| Silent Inverter Generator 2.200 <i>Together on</i>    | Page | 53 |
| Gasoline Generator 3.200-4.200-7.800-9.200 <b>NEW</b> | Page | 54 |

## Generator Accessories

|                            |      |    |
|----------------------------|------|----|
| Gasoline Generator ATS 45A | Page | 55 |
|----------------------------|------|----|

## Inverter

|                                      |      |    |
|--------------------------------------|------|----|
| ATA Solar Inverter 1.200-3.500-5.500 | Page | 56 |
|--------------------------------------|------|----|



# Together on

People protecting the Planet **Together**

Help us to help  
the environment!

Tecnoware has always been a company sensitive to environmental issues. On the 22nd April 2019, World Earth Day, we created a new corporate philosophy called **"Together On"**. An ideal that translates into a concrete path to make our reality a 100% Green Company. ISO 14001 Certification, Green Energy, Eco-sustainable products and Packaging, Sustainable Development projects are just some of the objectives achieved.

### Together On products, we turn on our focus to efficiency and sustainability

The Together On products are designed and developed with the aim of minimizing environmental impact as much as possible, improving energy efficiency, and investing in the sustainability of the production process.

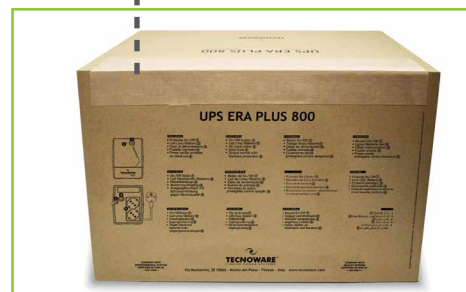
#### • ECO-FRIENDLY PACKAGING AND COMMUNICATION:

The care for the **environment** is an integral part for the choice of our **packaging** as well as the sensitivity in leading our users towards the **proper waste disposal** for both products and packaging.



Cardboard product box

Paper tape closing



Instructions with symbols for the proper disposal of each material



QR CODE label which redirect to the site



Eco Tips and suggestions on the correct disposal of waste, contained within the packaging of each product





## ● WEB SITE:

Our commitment to a “Green” approach is showcased on our [website](#) through a dedicated section featuring stories about **Together On branded projects and products**, as well as tips and advice on how “To be eco-friendly” at Home, in the Office, or while Traveling.



To be eco-friendly a Casa



To be eco-friendly in Ufficio



To be eco-friendly in Viaggio

## ● CERTIFICATIONS:

To be a Green Oriented company means committing to concretely reduce the production processes, storage and marketing of products impact and using clean energy sources. For this reason Tecnoware has received the **14001 Certification** and uses only **certified Green Energy**.



RePower electricity  
2021 origin Certificate



RePower electricity  
2022 origin Certificate



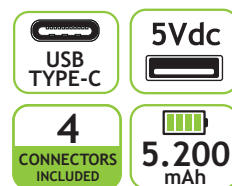
RePower electricity  
2023 origin Certificate

We are engaged in telling and sharing Projects and Initiatives that allows our **Company** to be **Green-Oriented**. Concrete actions, discussion opportunities, situations to be shared along a virtuous way in **protecting and safeguarding environment direction**.



# UPS ERA PLUS DC

## USB 5VDC 2A, USB-C OUTPUT 5V/9V/12V/15V/20V

*Together on*


1 On/off button 2 Battery mode indicator 3 Line mode indicator 4 USB Type-A 5V/2A Output 5 USB Type-C QC/PD Output 6 AC Input

### Main Specifications

- For powering devices such as WiFis, Routers, Modems, VOIP, cameras and charging Tablets, SmartPhones, Bluetooth headsets, Smartwatches, ecc
- 5.200 mAh Lithium-ion batteries
- Included 4 connectors: compatibility with most devices
- DC 12V 100cm output cable for connection to modem/router
- Overload and Short circuit protection
- Overvoltage protection
- Temperature control inside

### Specifications

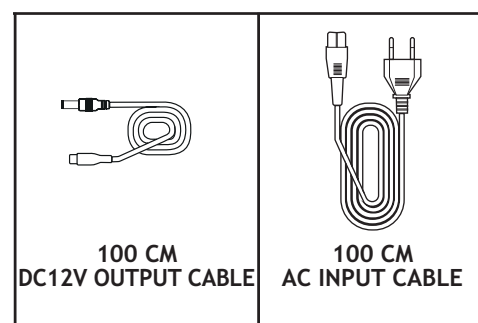
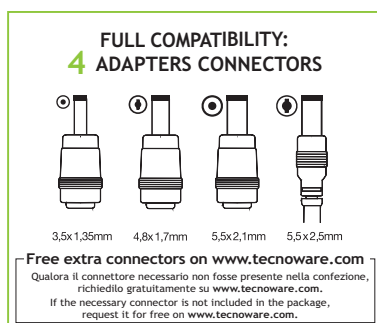
| UPS Model                          | ERA PLUS DC - USB 5VDC 2A, USB-C OUTPUT 5V/9V/12V/15V/20V   |
|------------------------------------|---|
| Code                               | FGCERAPLDC253C  |
| Nominal Power                      | 25 W Max  |
| Technology                         | Switching with Lithium-ion batteries  |
| Cooling                            | Natural   |
| Audible noise                      | < 40 dBA at 1 m   |
| Input connections                  | 2 PIN Italy plug AC Input cable   |
| Output connections                 | USB Type-C - USB Type-A   |
| Dimensions (UPS) WxHxD             | 7,6x3,2x9,3cm   |
| Dimensions (with packing) WxHxD    | 9,3x4,2x13,5cm  |
| Weight                             | 0,5 Kg  |
| Included                           | AC Input cable -100cm length - USB Type-C to 5,5x2,5mm connector - 12V<br>3 connectors (3,5x1,35mm - 4,8x1,7mm - 5,5x2,1mm) |
| <b>Input</b>                       |   |
| Nominal voltage                    | Single-phase 230Vac   |
| Input voltage range                | 110-240Vac  |
| Nominal frequency                  | 50/60 Hz  |
| <b>Output</b>                      |   |
| USB Type-A port                    | 5V/2A   |
| USB Type-C port                    | 5V/5A - 9V/2,77A - 12V/2,08A - 15V/1,66A - 20V/1,25A  |
| Overload capability                | < 130%  |
| Transfer time                      | 0 ms  |
| <b>Battery</b>                     |   |
| Type                               | ICR 18650 - 3.7Vdc - 2.600 mAh x2   |
| Capacity                           | 3.7Vdc - 5.200 mAh - 20Wh   |
| Backup time (typical)              | 240 min   |
| <b>Environmental specification</b> |   |
| Working temperature                | From 0 to 45 °C (recommended from 20 to 25 °C)  |
| Humidity                           | < 95% without condensation  |
| Maximum altitude                   | 3000 m  |
| IP protection                      | IP20  |
| Certifications                     | CE  |

© 2025 Tecnoware Power Systems. The technical data may change without prior notice.

### Easily replaceable batteries



### Included



24V - 48V  
**POE****10**  
CONNECTORS  
INCLUDED  
**8.800**  
mAh

- 1 Line/Battery mode indicator 2 On/off button 3 12Vdc output indicator 4 9Vdc output indicator 5 Battery Level indicator 6 5Vdc 1A USB Charger  
7 24Vdc/48Vdc POE Output selector 8 LAN Input 9 LAN and POE Output 10 POE Reset 11 9Vdc/12Vdc DC Output 12 9Vdc/12Vdc DC Output selector  
13 AC Input

### Main Specifications

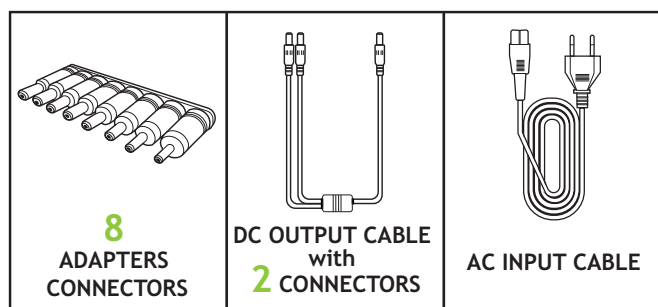
- For powering devices such as Wifis, Routers, Modems, VOIP, cameras and charging Tablets, SmartPhones, Bluetooth headsets, Smartwatches, ecc.
- 8.800 mAh Lithium-ion batteries
- POE function: for additional power supply on the LAN cable
- Included 10 connectors: compatibility with most devices
- Overload and Short circuit protection
- Overvoltage protection
- Temperature control inside

### Specifications

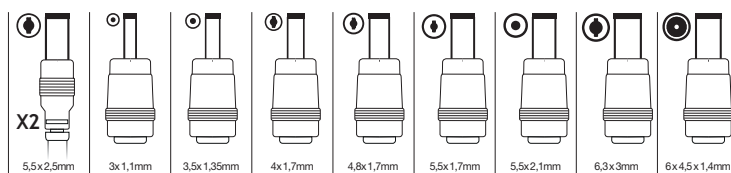
| UPS Model                          | ERA PLUS DC 9VDC/12VDC - POE 24VDC/48VDC - USB 5VDC                          |
|------------------------------------|--|
| Code                               | FGCERAPLDC252  |
| Nominal Power                      | 25 W Max   |
| Technology                         | Switching with Lithium-ion batteries   |
| Cooling                            | Natural  |
| Audible noise                      | < 40 dBA at 1 m  |
| Input connections                  | 2 PIN Italy plug AC Input cable  |
| Output connections                 | DC 5,5x2,5 mm - RJ45 - USB   |
| Dimension (UPS) WxHxD              | 16x2,8x10,5cm  |
| Dimension (with packing) WxHxD     | 17x3,5x14xcm   |
| Weight                             | 0,5 Kg   |
| Included                           | AC Input cable - DC output cable with 5,5x2,5 mm 2 connectors - 8 connectors |
| <b>Input</b>                       |  |
| Nominal voltage                    | Single-phase 230Vac  |
| Input voltage range                | 110-240Vac   |
| Nominal frequency                  | 50/60 Hz   |
| <b>Output</b>                      |  |
| POE ports                          | 24Vdc/48Vdc (selectable) 0.6A max, +Pin 4/5, -Pin 7/8                        |
| USB port                           | 5Vdc -1A max   |
| DC Output                          | 9Vdc/12Vdc (selectable) 2A max   |
| Overload capability                | < 130%   |
| Transfer time                      | 0 ms   |
| <b>Battery</b>                     |  |
| Type                               | Lithium Polymer transportable by plane (33Wh)                                |
| Backup time (typical)              | 240 min  |
| <b>Environmental specification</b> |  |
| Working temperature                | From 0 to 55 °C (recommended from 20 to 25 °C)                               |
| Humidity                           | < 95% without condensation   |
| Maximum altitude                   | 3000 m   |
| IP protection                      | IP20   |
| Certifications                     | CE   |

© 2025 Tecnoware Power Systems. The technical data may change without prior notice.

### Included



### FULL COMPATIBILITY: 10 CONNECTORS INCLUDED



Free extra connectors on [www.tecnoware.com](http://www.tecnoware.com)  
Qualora il connettore necessario non fosse presente nella confezione, richiedilo gratuitamente su [www.tecnoware.com](http://www.tecnoware.com). | If the necessary connector is not included in the package, request it for free on [www.tecnoware.com](http://www.tecnoware.com).



230 Vac

8 outlets  
TO PROTECT ALL  
YOUR DEVICES

- 1 On/Off switch 2 Power cable 3 Input thermal protection 4 Output sockets with child protection and blackout protection 5 Filtered output socket with child protection 6 5Vdc 2.1A USB Charger 7 USB Port 8 RJ11/45 Port

## Main Specifications

- Personal Computer, Modem/Router, Cash Register, Pos
- Automatic Voltage Regulation circuit (AVR)
- USB Charger (5V 2.1A) port
- Easy replacement batteries
- Rear slots for wall mounting

- Output sockets with child protection for blackout protection
- Output sockets with child protection for overvoltage protection
- USB port
- UPS Management Software TecnoManager compatible with Windows, Mac OS X, Unix, Linux, etc.



## Specifications

| UPS Model                         | ERA PLUS STRIP 1.000  | ERA PLUS STRIP 1.000 UK                       |
|-----------------------------------|---|---|
| Code                              | FGCERAPLS1002SCH  | FGCERAPLS1002UK                               |
| Max Computer Power*               | 1.000VA/700W  |   |
| Technology                        | Line Interactive with stabilizer  |   |
| Cooling                           | Natural   |   |
| Audible noise                     | < 40 dBA to 1 m   |   |
| Input connection                  | Fixed cable with Schuko plug  | Fixed cable with UK plug                      |
| Outlets                           | 4 UPS outputs Schuko/Italian + 4 only filtered outputs Schuko/Italian   | 4 UPS outputs UK + 4 only filtered outputs UK |
| Dimension (UPS) WxHxD             | 20x10x34,5 cm   |   |
| Dimension (with packing) WxHxD    | 26,9x14,6x42,5 cm   |   |
| Weight                            | 4,4 Kg  |   |
| Input                             |   |   |
| Number of phases                  | 1Ph+N   |   |
| Nominal voltage                   | Single-phase 230Vac   |   |
| Input voltage range               | +20%/-25%   |   |
| Nominal frequency                 | 50/60 Hz (automatic selection)  |   |
| Input frequency range             | +/-5%   |   |
| Output                            |   |   |
| Number of phases                  | 1Ph+N   |   |
| Nominal voltage                   | Single-phase 230Vac   |   |
| Voltage regulation (Line mode)    | AVR (Automatic Voltage Regulation)  |   |
| Voltage regulation (Battery mode) | +/-5%   |   |
| Frequency                         | 50/60 Hz (automatic selection)  |   |
| Inverter waveform                 | Modified sinewave   |   |
| Overload capability               | < 130%  |   |
| Transfer time                     | 2 ms (typical)  |   |
| Battery                           |   |   |
| Type                              | Lead acid, sealed, maintenance free   |   |
| Backup time (typical)             | 10-40 min   |   |
| Environmental specification       |   |   |
| Working temperature               | From 0 to 40 °C (recommended from 20 to 25 °C)  |   |
| Humidity                          | < 95% without condensation  |   |
| Maximum altitude                  | 3000 m  |   |
| IP protection                     | IP20  |   |
| Certifications                    | CE (Standards: Low Voltage Directive IEC EN 62040-1; EMC Directive IEC EN 62040-2; classification IEC EN 62040-3) |   |

© 2025 Tecnoware Power Systems. The technical data may change without prior notice.

\* This UPS is designed and sized for the protection of IT workstations. The power expressed as "Max Computer Power" corresponds to the sum of the Plate Powers, of the Switching Power Supplies present in the IT Stations to be protected. For any use with devices other than IT workstations, it is advisable to seek specific advice from the manufacturer

Available on request with input/output nominal voltage 110Vac or 120Vac and with input plug and output sockets for specific country.



- 1 On/Off button 2 LCD Display 3 USB port 4 Line protection Telephone/Modem/Lan RJ11/RJ45 5 Output sockets with blackout protection  
6 Input fuse 7 Input socket

#### Main Specifications

- For Small server, Local Area Networks (LAN), Switch, HUB, Firewall, Video Surveillance Systems
- Automatic Voltage Regulation circuit (AVR)
- Output sockets with blackout protection
- USB Port
- Mounting in Rack cabinet 19"
- UPS Management TecnoManager compatible with Windows, Mac OS X, Unix, Linux, etc.

#### Specifications

| UPS Model                          | ERA PLUS 1.200 RACK MOUNT   |
|------------------------------------|---|
| Code                               | FGCERAPL1202RSCH  |
| Max Computer Power*                | 1.200VA/840W  |
| Technology                         | Line Interactive with stabilizer  |
| Cooling                            | Natural   |
| Audible noise                      | < 40 dBA to 1 m   |
| Dimension UPS WxHxD                | 43,8x8,8x23 cm (2U)   |
| Dimension with packing WxHxD       | 52x19,5x40,5 cm   |
| Weight                             | 6,5 Kg  |
| <b>Input</b>                       |   |
| Number of phases                   | 1Ph+N   |
| Nominal voltage                    | Single-phase 230Vac   |
| Input voltage range                | +20%/-25%   |
| Nominal frequency                  | 50/60 Hz (automatic selection)  |
| Input frequency range              | +/-5%   |
| <b>Output</b>                      |   |
| Number of phases                   | 1Ph+N   |
| Nominal voltage                    | Single-phase 230Vac   |
| Voltage regulation (Line mode)     | AVR (Automatic Voltage Regulation)  |
| Voltage regulation (Battery mode)  | +/-5%   |
| Frequency                          | 50/60 Hz (automatic selection)  |
| Inverter waveform                  | Modified sinewave   |
| Overload capability                | < 130%  |
| Transfer time                      | 2 ms (typical)  |
| <b>Battery</b>                     |   |
| Type                               | Lead acid, sealed, maintenance free   |
| Backup time (typical)              | 10-40 min   |
| <b>Environmental specification</b> |   |
| Working temperature                | From 0 to 55 °C (recommended from 20 to 25 °C)  |
| Humidity                           | < 95% without condensation  |
| Maximum altitude                   | 3000 m  |
| IP protection                      | IP20  |
| Certifications                     | CE (Standards: Low Voltage Directive IEC EN 62040-1; EMC Directive IEC EN 62040-2; classification IEC EN 62040-3) |

© 2025 Tecnoware Power Systems. The technical data may change without prior notice.

\* This UPS is designed and sized for the protection of IT workstations. The power expressed as "Max Computer Power" corresponds to the sum of the Plate Powers, of the Switching Power Supplies present in the IT Stations to be protected. For any use with devices other than IT workstations, it is advisable to seek specific advice from the manufacturer

Available on request with input/output nominal voltage 110Vac or 120Vac and with input plug and output sockets for specific country.



- 1 On/off switch 2 LED Line/Battery/Fault 3 Power cable 4 Input socket 5 Input thermal protection 6 Output sockets with child protection and blackout protection 7 Output sockets with blackout protection 8 USB Port (only for Era Plus 1.200 and Era Plus 1.600)

## Main Specifications

- Personal Computer, Modem, Local Area Networks, Video Surveillance Systems
- Automatic Voltage Regulation circuit (AVR)
- Output sockets with child protection for blackout protection
- Output sockets with child protection for overvoltage protection
- USB Port (only for Era Plus 1.200-1.600)
- UPS Management Software compatible with Windows, Mac OS X, Unix, Linux, etc.

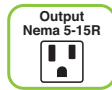
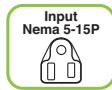
## Specifications

| UPS Model                         | ERA PLUS 600  | ERA PLUS 800   | ERA PLUS 950   | ERA PLUS 1.200  | ERA PLUS 1.600  |
|-----------------------------------|---|----------------|----------------|-----------------|-----------------|
| Schuko version code               | FGCERAPL602SCH  | FGCERAPL802SCH | FGCERAPL952SCH | FGCERAPL1202SCH | FGCERAPL1602SCH |
| IEC version code                  | FGCERAPL602IEC  | FGCERAPL802IEC | FGCERAPL952IEC | FGCERAPL1202IEC | FGCERAPL1602IEC |
| Universal version code            | FGCERAPL602UNI  | FGCERAPL802UNI | FGCERAPL952UNI | FGCERAPL1202UNI | FGCERAPL1602UNI |
| Max Computer Power*               | 600VA/420W  | 800VA/560W     | 950VA/665W     | 1.200VA/840W    | 1.600VA/1.120W  |
| Technology                        | Line Interactive with stabilizer  |                |                |                 |                 |
| Interface                         | -   |                |                | USB Port        |                 |
| Cooling                           | Natural   |                |                |                 |                 |
| Audible noise                     | < 40 dBA to 1 m   |                |                |                 |                 |
| Dimension (UPS) WxHxD             | 10,1x14,2x27,9 cm   |                |                |                 |                 |
| Dimension (with packing) WxHxD    | 18x22x34cm  |                |                |                 |                 |
| Weight                            | 3,7 Kg  | 3,9 Kg         | 4,2 Kg         | 4,5 Kg          | 5 Kg            |
| Input                             |   |                |                |                 |                 |
| Number of phases                  | 1Ph+N   |                |                |                 |                 |
| Nominal voltage                   | Single-phase 230Vac   |                |                |                 |                 |
| Input voltage range               | +20%/-25%   |                |                |                 |                 |
| Nominal frequency                 | 50/60 Hz (automatic selection)  |                |                |                 |                 |
| Input frequency range             | +/-5%   |                |                |                 |                 |
| Output                            |   |                |                |                 |                 |
| Number of phases                  | 1Ph+N   |                |                |                 |                 |
| Nominal voltage                   | Single-phase 230Vac   |                |                |                 |                 |
| Voltage regulation (Line mode)    | AVR (Automatic Voltage Regulation)  |                |                |                 |                 |
| Voltage regulation (Battery mode) | +/-5%   |                |                |                 |                 |
| Frequency                         | 50/60 Hz (automatic selection)  |                |                |                 |                 |
| Inverter waveform                 | Modified sinewave   |                |                |                 |                 |
| Overload capability               | < 130%  |                |                |                 |                 |
| Transfer time                     | 2 ms (typical)  |                |                |                 |                 |
| Battery                           |   |                |                |                 |                 |
| Type                              | Lead acid, sealed, maintenance free   |                |                |                 |                 |
| Backup time (typical)             | 10-40 min   |                |                |                 |                 |
| Environmental specification       |   |                |                |                 |                 |
| Working temperature               | From 0 to 55 °C (recommended from 20 to 25° C)  |                |                |                 |                 |
| Humidity                          | < 95% without condensation  |                |                |                 |                 |
| Maximum altitude                  | 3000 m  |                |                |                 |                 |
| IP protection                     | IP20  |                |                |                 |                 |
| Certifications                    | CE (Standards: Low Voltage Directive IEC EN 62040-1; EMC Directive IEC EN 62040-2; classification IEC EN 62040-3) |                |                |                 |                 |

© 2025 Tecnoware Power Systems. The technical data may change without prior notice.

\* This UPS is designed and sized for the protection of IT workstations. The power expressed as "Max Computer Power" corresponds to the sum of the Plate Powers, of the Switching Power Supplies present in the IT Stations to be protected. For any use with devices other than IT workstations, it is advisable to seek specific advice from the manufacturer





- 1 On/off switch 2 Power cable 3 Input thermal protection 4 Output sockets with child protection and blackout protection 5 Filtered output socket with child protection 6 USB Port (only for Era Plus 1.200 and Era Plus 1.600)

### Main Specifications

- Personal Computer, Modem, Local Area Networks, Video Surveillance Systems
- Automatic Voltage Regulation circuit (AVR)
- Output sockets with child protection for blackout protection
- Output sockets with child protection for overvoltage protection
- USB Port (only for Era Plus 1.200-1.600)
- UPS Management Software TecnoManager compatible with Windows, Mac OS X, Unix, Linux, etc.

### Specifications

| UPS Model                         | ERA PLUS 600                                   | ERA PLUS 800   | ERA PLUS 950   | ERA PLUS 1.200  | ERA PLUS 1.600  |
|-----------------------------------|--|----------------|----------------|-----------------|-----------------|
| Code                              | FGCERAPL602NEM                                 | FGCERAPL802NEM | FGCERAPL950NEM | FGCERAPL1202NEM | FGCERAPL1602NEM |
| Max Computer Power*               | 600VA/420W                                     | 800VA/560W     | 950VA/665W     | 1.200 VA/840W   | 1.600VA/1.120W  |
| Technology                        | Line Interactive with stabilizer               |                |                |                 |                 |
| Interface                         | -  |                | USB Port       |                 |                 |
| Cooling                           | Natural  |                |                |                 |                 |
| Audible noise                     | < 40 dBA at 1 m                                |                |                |                 |                 |
| Dimension (UPS) WxHxD             | 10,1x14,2x27,9 cm                              |                |                |                 |                 |
| Dimension (with packing) WxHxD    | 18x22x34cm                                     |                |                |                 |                 |
| Weight                            | 3,7 Kg   | 3,9 Kg         | 4,2 Kg         | 4,5 Kg          | 5 Kg            |
| Input                             |  |                |                |                 |                 |
| Number of phases                  | 1Ph+N  |                |                |                 |                 |
| Nominal voltage                   | Single-phase 120Vac                            |                |                |                 |                 |
| Input voltage range               | +25%/-30%                                      |                |                |                 |                 |
| Nominal frequency                 | 50/60 Hz (automatic selection)                 |                |                |                 |                 |
| Input frequency range             | +/-5Hz   |                |                |                 |                 |
| Output                            |  |                |                |                 |                 |
| Number of phases                  | 1Ph+N  |                |                |                 |                 |
| Nominal voltage                   | Single-phase 120Vac                            |                |                |                 |                 |
| Voltage regulation (Line mode)    | AVR (Automatic Voltage Regulation)             |                |                |                 |                 |
| Voltage regulation (Battery mode) | +/-5%  |                |                |                 |                 |
| Frequency                         | 50/60 Hz (automatic selection)                 |                |                |                 |                 |
| Inverter waveform                 | Modified sinewave                              |                |                |                 |                 |
| Overload capability               | < 130%   |                |                |                 |                 |
| Transfer time                     | 2 ms (typical)                                 |                |                |                 |                 |
| Battery                           |  |                |                |                 |                 |
| Type                              | Lead acid, sealed, maintenance free            |                |                |                 |                 |
| Backup time (typical)             | 10-40 min                                      |                |                |                 |                 |
| Environmental specification       |  |                |                |                 |                 |
| Working temperature               | From 0 to 55 °C (recommended from 20 to 25° C) |                |                |                 |                 |
| Humidity                          | < 95% without condensation                     |                |                |                 |                 |
| Maximum altitude                  | 3000 m   |                |                |                 |                 |
| IP protection                     | IP20   |                |                |                 |                 |

© 2025 Tecnoware Power Systems. The technical data may change without prior notice.

\* This UPS is designed and sized for the protection of IT workstations. The power expressed as "Max Computer Power" corresponds to the sum of the Plate Powers, of the Switching Power Supplies present in the IT Stations to be protected. For any use with devices other than IT workstations, it is advisable to seek specific advice from the manufacturer



1 On/off switch 2 LED Line/Battery/Fault 3 Power cable 4 Input socket 5 Input thermal protection 6 Output sockets with blackout protection 7 Output sockets with child protection and blackout protection 8 Filtered output socket 9 Filtered output socket with child protection 10 Telephone line/Modem/Lan RJ11/RJ45 protection 11 USB Port

Main Specifications

- Personal Computer, Modem, Local Area Networks, Video Surveillance Systems
  - Automatic Voltage Regulation circuit (AVR)
  - Output sockets with child protection for blackout protection
  - Output sockets with child protection for overvoltage protection
- USB Port
  - Telephone line/Modem/Lan RJ11/RJ45 protection
  - UPS Management Software compatible with Windows, Mac OS X, Unix, Linux, etc.

Specifications

| UPS Model                         | ERA PLUS 2.100  | ERA PLUS 2.600  |
|-----------------------------------|---|-----------------|
| IEC version code                  | FGCERAPL2102IEC   | FGCERAPL2602IEC |
| Universal version code            | FGCERAPL2102UNI   | FGCERAPL2602UNI |
| Max Computer Power*               | 2.100VA/1.470W  | 2.600VA/1.820W  |
| Technology                        | Line Interactive with stabilizer  |                 |
| Interface                         | USB Port + RJ11/RJ45 Filter   |                 |
| Cooling                           | Natural   | Fan cooling     |
| Audible noise                     | < 40 dBA to 1 m   | < 45 dBA to 1 m |
| Dimension (UPS) WxHxD             |   | 13x18,2x32 cm   |
| Dimension (with packing) WxHxD    |   | 23,2x27,3x39 cm |
| Weight                            | 8,6 Kg  | 10,4 Kg         |
| Input                             |   |                 |
| Number of phases                  | 1Ph+N   |                 |
| Nominal voltage                   | Single-phase 230Vac   |                 |
| Input voltage range               | +20%/-25%   |                 |
| Nominal frequency                 | 50/60 Hz (automatic selection)  |                 |
| Input frequency range             | +/-5%   |                 |
| Output                            |   |                 |
| Number of phases                  | 1Ph+N   |                 |
| Nominal voltage                   | Single-phase 230Vac   |                 |
| Voltage regulation (Line mode)    | AVR (Automatic Voltage Regulation)  |                 |
| Voltage regulation (Battery mode) | +/-5%   |                 |
| Frequency                         | 50/60 Hz (automatic selection)  |                 |
| Inverter waveform                 | Modified sinewave   |                 |
| Overload capability               | < 130%  |                 |
| Transfer time                     | 2 ms (typical)  |                 |
| Battery                           |   |                 |
| Type                              | Lead acid, sealed, maintenance free   |                 |
| Backup time (typical)             | 10-90 min   |                 |
| Environmental specification       |   |                 |
| Working temperature               | From 0 to 55 °C (recommended from 20 to 25° C)  |                 |
| Humidity                          | < 95% without condensation  |                 |
| Maximum altitude                  | 3000 m  |                 |
| IP protection                     | IP20  |                 |
| Certifications                    | CE (Standards: Low Voltage Directive IEC EN 62040-1; EMC Directive IEC EN 62040-2; classification IEC EN 62040-3) |                 |

© 2025 Tecnoware Power Systems. The technical data may change without prior notice.

\* This UPS is designed and sized for the protection of IT workstations. The power expressed as "Max Computer Power" corresponds to the sum of the Plate Powers, of the Switching Power Supplies present in the IT Stations to be protected. For any use with devices other than IT workstations, it is advisable to seek specific advice from the manufacturer



- 1 On/off switch 2 Power cable 3 Input thermal protection 4 Output sockets with child protection and blackout protection 5 Filtered output socket with child protection 6 Telephone line/Modem/Lan RJ11/RJ45 protection 7 USB Port

Main Specifications

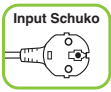
- Personal Computer, Modem, Local Area Networks, Video Surveillance Systems
- Automatic Voltage Regulation circuit (AVR)
- Output sockets with child protection for blackout protection
- Output sockets with child protection for overvoltage protection
- USB Port
- Telephone line/Modem/Lan RJ11/RJ45 protection
- UPS Management Software TecnoManager compatible with Windows, Mac OS X, Unix, Linux, etc.

Specifications

| UPS Model                         | ERA PLUS 2.100                                 |  | ERA PLUS 2.600  |  |
|-----------------------------------|--|--|-----------------|--|
| Code                              | FGCERAPL2102NEM                                |  | FGCERAPL2602NEM |  |
| Max Computer Power*               | 2.100VA/1.470W                                 |  | 2.600VA/1.820W  |  |
| Technology                        | Line Interactive with stabilizer               |  |                 |  |
| Interface                         | USB Port + RJ11/RJ45 Filter                    |  |                 |  |
| Cooling                           | Natural  |  | Fan cooling     |  |
| Audible noise                     | < 40 dBA a 1 m                                 |  | < 45 dBA a 1 m  |  |
| Dimension (UPS) WxHxD             |  |  | 13x18,2x32 cm   |  |
| Dimension (with packing) WxHxD    |  |  | 23,2x27,3x39 cm |  |
| Weight                            | 8,6 Kg   |  | 10,4 Kg         |  |
| Input                             |  |  |                 |  |
| Number of phases                  | 1Ph+N  |  |                 |  |
| Nominal voltage                   | Single-phase 120Vac                            |  |                 |  |
| Input voltage range               | +25%/-30%                                      |  |                 |  |
| Nominal frequency                 | 50/60 Hz (automatic selection)                 |  |                 |  |
| Input frequency range             | +/-5Hz   |  |                 |  |
| Output                            |  |  |                 |  |
| Number of phases                  | 1Ph+N  |  |                 |  |
| Nominal voltage                   | Single-phase 120Vac                            |  |                 |  |
| Voltage regulation (Line mode)    | AVR (Automatic Voltage Regulation)             |  |                 |  |
| Voltage regulation (Battery mode) | +/-5%  |  |                 |  |
| Frequency                         | 50/60 Hz (automatic selection)                 |  |                 |  |
| Inverter waveform                 | Modified sinewave                              |  |                 |  |
| Overload capability               | < 130%   |  |                 |  |
| Transfer time                     | 2 ms (typical)                                 |  |                 |  |
| Battery                           |  |  |                 |  |
| Type                              | Lead acid, sealed, maintenance free            |  |                 |  |
| Backup time (typical)             | 10-90 min                                      |  |                 |  |
| Environmental specification       |  |  |                 |  |
| Working temperature               | From 0 to 55 °C (recommended from 20 to 25° C) |  |                 |  |
| Humidity                          | < 95% without condensation                     |  |                 |  |
| Maximum altitude                  | 3000 m   |  |                 |  |
| IP protection                     | IP20   |  |                 |  |

© 2025 Tecnoware Power Systems. The technical data may change without prior notice.

\* This UPS is designed and sized for the protection of IT workstations. The power expressed as "Max Computer Power" corresponds to the sum of the Plate Powers, of the Switching Power Supplies present in the IT Stations to be protected. For any use with devices other than IT workstations, it is advisable to seek specific advice from the manufacturer



- 1 On/Off button 2 LED Line/Battery/Fault 3 Power cable 4 Protezione termica d'ingresso 5 Output sockets with blackout protection  
6 USB Port

Main Specifications

- For Personal Computer, Console Game, Local Area Networks (LAN), Video Surveillance Systems
- Designed for Power Supplies with active PFC
- Automatic Voltage Regulation circuit (AVR)
- Output sockets with child protection for blackout protection
- Output sockets with child protection for overvoltage protection
- USB port
- UPS Management Software compatible with Windows, Mac OS X, Unix, Linux, etc.

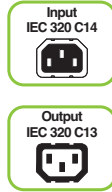
Specifications

| UPS Model                         | ERA PLUS ACTIVE 1.200   | ERA PLUS ACTIVE 1.600 |
|-----------------------------------|---|-----------------------|
| Code                              | FGCERAPLAT1202SCH   | FGCERAPLAT1602SCH     |
| Max Computer Power*               | 1.200VA/840W  | 1.600VA/1.120W        |
| Technology                        | Line Interactive with stabilizer compatible with Active PFC   |                       |
| Interface                         | USB port  |                       |
| Cooling                           | Natural   |                       |
| Audible noise                     | < 40 dBA at 1 m   |                       |
| Dimension (UPS) WxHxD             | 20,7x8,2x22,8cm   |                       |
| Dimension (with packing) WxHxD    | 28x12x28,8cm  |                       |
| Weight                            | 2,7 Kg  | 3,1 Kg                |
| Input                             |   |                       |
| Number of phases                  | 1Ph+N   |                       |
| Nominal voltage                   | Single-phase 230Vac   |                       |
| Input voltage range               | +20%/-25%   |                       |
| Nominal frequency                 | 50/60 Hz (automatic selection)  |                       |
| Input frequency range             | +/-5%   |                       |
| Output                            |   |                       |
| Number of phases                  | 1Ph+N   |                       |
| Nominal voltage                   | Single-phase 230Vac   |                       |
| Voltage regulation (Line mode)    | AVR (Automatic Voltage Regulation)  |                       |
| Voltage regulation (Battery mode) | +/-5%   |                       |
| Frequency                         | 50/60 Hz (automatic selection)  |                       |
| Inverter waveform                 | Modified sinewave   |                       |
| Overload capability               | < 130%  |                       |
| Transfer time                     | 2 ms (typical)  |                       |
| Battery                           |   |                       |
| Type                              | Lead acid, sealed, maintenance free   |                       |
| Backup time (typical)             | 10-40 min   |                       |
| Environmental specification       |   |                       |
| Working temperature               | From 0 to 55 °C (recommended from 20 to 25° C)  |                       |
| Humidity                          | < 95% without condensation  |                       |
| Maximum altitude                  | 3000 m  |                       |
| IP protection                     | IP20  |                       |
| Certifications                    | CE (Standards: Low Voltage Directive IEC EN 62040-1; EMC Directive IEC EN 62040-2; classification IEC EN 62040-3) |                       |

© 2025 Tecnoware Power Systems. The technical data may change without prior notice.

\* This UPS is designed and sized for the protection of IT workstations. The power expressed as "Max Computer Power" corresponds to the sum of the Plate Powers, of the Switching Power Supplies present in the IT Stations to be protected. For any use with devices other than IT workstations, it is advisable to seek specific advice from the manufacturer

Available on request with input/output nominal voltage 110Vac or 120Vac and with input plug and output sockets for specific country.



- 1 Display LCD 2 On/Off button - Control buttons 3 5V 2.1A USB Charger 4 Output socket with blackout protection 5 Filtered output socket 6 Input socket 7 Input fuse 8 Line protection Telephone/Modem/Lan RJ11/RJ45 9 USB port

## Main Specifications

- For Workstation, PC Game, Console Game, Personal Computer, Server, Local Area Networks (LAN), Home Theatre, TV, HI-FI, Fireplace heating systems (excluding Exa PLUS 1.100), Home heating system
- Silent (the fan works only in Battery Mode or boost/buck AVR mode)
- Display with Intelligent Backlighting System
- 2 USB Charger Ports (5V 2.1A)
- Automatic Voltage Regulation circuit (AVR)
- Sinewave output
- Hot Swap battery
- Output sockets with blackout protection
- Output sockets for surge protection
- UPS Management Software TecnoManager compatible with Windows, Mac OS X, Unix, Linux, etc.

## Specifications

| UPS Model                         | EXA PLUS 1.100  |  | EXA PLUS 1.600   | EXA PLUS 2.100  |
|-----------------------------------|---|--|--|-----------------|
| Code                              | FGCEXAPL1102IEC   |  | FGCEXAPL1602IEC  | FGCEXAPL2102IEC |
| Max Computer Power*<br>Technology | 1.100VA /770W   |  | 1.600VA/1.120W<br>Line Interactive with stabilizer               | 2.100VA/1.470W  |
| LCD Display                       | UPS status, input/output voltage, input/output frequency, load level, battery capacity, warning or fault error code.<br>(the display backlighting is normally off, switch on only after a key is pressed) |  |  |                 |
| Cooling                           | Fan cooling (only in battery mode, charging mode or boost/buck AVR mode)  |  |  |                 |
| Audible noise                     | < 12 dBA 1m (line mode)<br>< 40 dBA 1m (when the fan is working)  |  | < 12 dBA 1m (line mode)<br>< 45 dBA 1m (when the fan is working) |                 |
| Dimension (UPS) WxHxD             | 9,9x28x28,8 cm  |  | 9,9x28x41 cm   |                 |
| Dimension (with packing) WxHxD    | 18x37,6x37,3 cm   |  | 18x37,6x49,5 cm  |                 |
| Weight                            | 7,4 Kg  |  | 11,8 Kg  | 13,1Kg          |
| Input                             |   |  |  |                 |
| Number of phases                  | 1Ph+N   |  |  |                 |
| Nominal voltage                   | Single-phase 230Vac   |  |  |                 |
| Input voltage range               | +20%/-25%   |  |  |                 |
| Nominal frequency                 | 50/60 Hz (automatic selection)  |  |  |                 |
| Input frequency range             | +/-5%   |  |  |                 |
| Output                            |   |  |  |                 |
| Number of phases                  | 1Ph+N   |  |  |                 |
| Nominal voltage                   | Single-phase 230Vac   |  |  |                 |
| Voltage regulation (Line mode)    | AVR (Automatic Voltage Regulation)  |  |  |                 |
| Voltage regulation (Battery mode) | +/-5%   |  |  |                 |
| Frequency                         | 50/60 Hz (automatic selection)  |  |  |                 |
| Inverter waveform                 | Sinewave  |  |  |                 |
| Overload capability               | < 130%  |  |  |                 |
| Transfer time                     | 2 ms (typical)  |  |  |                 |
| Battery                           |   |  |  |                 |
| Type                              | Lead acid, sealed, maintenance free   |  |  |                 |
| Backup time (typical)             | 10-30 min   |  |  |                 |
| Environmental specification       |   |  |  |                 |
| Working temperature               | From 0 to 55 °C (recommended from 20 to 25 °C)  |  |  |                 |
| Humidity                          | < 95% without condensation  |  |  |                 |
| Maximum altitude                  | 3000 m  |  |  |                 |
| IP protection                     | IP20  |  |  |                 |
| Certifications                    | CE (Standards: Low Voltage Directive IEC EN 62040-1; EMC Directive IEC EN 62040-2; classification IEC EN 62040-3)   |  |  |                 |

© 2025 Tecnoware Power Systems. The technical data may change without prior notice.

\* This UPS is designed and sized for the protection of IT workstations. The power expressed as "Max Computer Power" corresponds to the sum of the Plate Powers, of the Switching Power Supplies present in the IT Stations to be protected. For any use with devices other than IT workstations, it is advisable to seek specific advice from the manufacturer

Available on request with input/output nominal voltage 110Vac or 120Vac and with input plug and output sockets for specific country.





Ups Exa Plus 3.000

Ups Exa Plus 4.500



- 1 Input socket 2 Input Thermal protection 3 IEC320 C13 output sockets with Blackout protection 4 IEC320 C19 output socket with Blackout protection  
5 USB port 6 RS232 port 7 Slot for SNMP, Dry Contact or MODBUS interface 8 EPO connector 9 Connector for additional Battery Box

Main Specifications

- For Workstation, PC Game, Personal Computer, Server,  
Local Area Networks (LAN)
- Designed for silent environment  
the fan works only in Battery Mode or boost/buck AVR mode)
  - Display with Intelligent Backlighting System
  - Automatic Voltage Regulation circuit (AVR)
  - Intelligent slot for SNMP or Dry Contact card or MODBUS
  - Sinewave output
  - Battery charging system controlled by microprocessor
  - Output sockets with blackout and surge protection
  - UPS Management Software TecnoManager compatible with Windows, Mac OS X, Unix, Linux, etc.

Specifications

| UPS Model   | EXA PLUS 3.000  |  | EXA PLUS 4.500                  |  |
|---|---|--|---------------------------------|--|
| Code  | FGCEXAPL3002IEC   |  | FGCEXAPL4502IEC                 |  |
| Max Computer Power*   | 3.000VA/2.100W  |  | 4.500VA/3.150W                  |  |
| Technology  | Line Interactive with stabilizer  |  |                                 |  |
| LCD Display   | UPS status, input/output voltage, input/output frequency, load level, battery capacity, warning or fault error code.<br>(the display backlighting is normally off, switch on only after a key is pressed) |  |                                 |  |
| Cooling   | Fan cooling (only in battery mode, charging mode or boost/buck AVR mode)  |  |                                 |  |
| Audible noise   | < 45 dBA to 1 m   |  |                                 |  |
| Dimension UPS LxHxP   | 14,5x22x45,5 cm   |  | 19x31,8x42,1 cm                 |  |
| Dimension (with packing) LxHxP  | 23x32,5x54 cm   |  | 32x46x56 cm                     |  |
| Weight  | 19,7 Kg   |  | 29 Kg                           |  |
| Input   |   |  |                                 |  |
| Number of phases  | 1Ph+N   |  |                                 |  |
| Nominal voltage   | 208Vac/220Vac/230Vac/240Vac   |  |                                 |  |
| Input voltage range   | 162-290Vac  |  |                                 |  |
| Nominal frequency   | 50/60 Hz (selectable)   |  |                                 |  |
| Output  |   |  |                                 |  |
| Number of phases  | 1F+N  |  |                                 |  |
| Nominal voltage   | 208Vac/220Vac/230Vac/240Vac (selectable)  |  |                                 |  |
| Static voltage Regulation at %100<br>linear load (On-Line and battery mode) | ±1,5%   |  |                                 |  |
| Voltage THD at rated linear load  | <2% (linear load), <5% (non-linear load)  |  |                                 |  |
| Crest factor  | 3:1   |  |                                 |  |
| Frequency   | 50/60 Hz (selectable)   |  |                                 |  |
| Inverter waveform   | Sinewave  |  |                                 |  |
| Overload capability   | < 130%  |  |                                 |  |
| Transfer time   | 2 ms (typical)  |  |                                 |  |
| Battery   |   |  |                                 |  |
| Type  | Lead acid, sealed, maintenance free   |  |                                 |  |
| Backup time (typical)   | 10-30 min   |  |                                 |  |
| Extended autonomy   | -   |  | External Battery Box (optional) |  |
| Environmental specification   |   |  |                                 |  |
| Working temperature   | From 0 to 40 °C (recommended from 20 to 25 °C)  |  |                                 |  |
| Humidity  | < 95% without condensation  |  |                                 |  |
| Maximum altitude  | 3000 m  |  |                                 |  |
| IP protection   | IP20  |  |                                 |  |
| Certifications  | CE (Standards: Low Voltage Directive IEC EN 62040-1; EMC Directive IEC EN 62040-2; classification IEC EN 62040-3)   |  |                                 |  |

© 2025 Tecnoware Power Systems. The technical data may change without prior notice.

\* This UPS is designed and sized for the protection of IT workstations. The power expressed as "Max Computer Power" corresponds to the sum of the Plate Powers, of the Switching Power Supplies present in the IT Stations to be protected. For any use with devices other than IT workstations, it is advisable to seek specific advice from the manufacturer

Accessories

| Model                                       | Code         |
|---|--------------|
| Bypass Box for UPS RT from 3 KVA to 4.5 KVA | FGCBYPIEC    |
| Dry Contact DB9 Interface                   | FGCEVODSDRY3 |
| Dry Contact 9 PIN Interface                 | FGCEVODSDRY4 |

| Model                   | Code      |
|-------------------------|-----------|
| SNMP Internal Interface | FGCNETAG7 |
| ModBus RS485 Interface  | FGCMODBUS |



- 1 Connector for the UPS Battery Box connection 2 Extra Battery Box connector 3 Power socket for the battery charger circuit  
4 Thermal Fuse protecting the battery charger circuit 5 Thermal switch for battery circuit

Main Specifications

- Internal battery charger on every unit
- Units can be expanded infinitely
- Batteries with thermal circuit protection
- Easy connection to UPS
- Convertible format (Tower or Rack 19")

Specifications

| Model                              | BATTERY BOX FOR EXA PLUS 4.500                  |                |
|------------------------------------|---|----------------|
| Code                               | FBBDP3602RT/09                                  | FBBDP3602RT/18 |
| Positioning                        | Into Tower or 19" Rack cabinet (2U) positioning |                |
| Dimension (Box) WxHxD              | 43,8x8,8x63 cm                                  |                |
| Dimension (with packing) WxHxD     | 60x24x75 cm                                     |                |
| Weight                             | 30 Kg   | 43 Kg          |
| <b>Battery</b>                     |   |                |
| Type                               | Lead acid, sealed, maintenance free             |                |
| <b>Internal Battery Charger</b>    |   |                |
| Nominal input voltage              | 230Vac  |                |
| Nominal input frequency            | 50/60Hz   |                |
| Nominal charging voltage           | 82,2Vdc   |                |
| Max charging current               | 1A  |                |
| <b>Protection</b>                  |   |                |
| Battery charge input               | Thermal fuse                                    |                |
| Battery circuit                    | Magnetothermic switch                           |                |
| <b>Environmental specification</b> |   |                |
| Working temperature                | From 0 to 55 °C (recommended from 20 to 25 °C)  |                |
| Humidity                           | < 95% without condensation                      |                |
| Maximum altitude                   | 3000 m  |                |
| IP protection                      | IP20  |                |
| Certifications                     | CE  |                |

© 2025 Tecnoware Power Systems. The technical data may change without prior notice.

# UPS EVO DSP PLUS PF 0,9

## 1.200-2.400-3.600-5.500

Together on



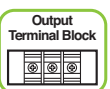
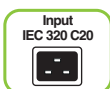
Ups Evo DSP Plus 1.200 PF 0,9



Ups Evo DSP Plus 2.400 PF 0,9



Ups Evo DSP Plus 3.600 PF 0,9



Ups Evo DSP Plus 5.500 PF 0,9

- ① Input connection ② Input Thermal protection ③ IEC320 C13 output sockets with Blackout protection  
 ④ Output Terminal block with Blackout protection ⑤ USB port ⑥ RS232 port ⑦ Slot for SNMP, Dry Contact or MODBUS interface  
 (for EVO DSP Plus 5.5 PF 0,9 to replace USB e RS232) ⑧ EPO connector ⑨ Connector for additional Battery Box  
 ⑩ Switch mains input ⑪ Input/output terminal block

**POWER FACTOR** 0,9

### Main Specifications

- For Local Area Network (LAN), Data Centers, Industrial equipment, Electromedical equipment
- Power Factor 0,9
- Rectifier realized by IGBT technology

- Compatible with Generators
- Battery charging system controlled by micro processor
- Intelligent slot for SNMP or Dry Contact card or MODBUS

- Static Bypass
- High efficiency and low operating cost
- UPS Management Software TecnoManager compatible with Windows, Mac OS X, Unix, Linux, etc.

**HIGH EFFICIENCY**  
94%

### Specifications

| UPS Model  | EVO DSP PLUS 1.200 PF 0,9   | EVO DSP PLUS 2.400 PF 0,9 | EVO DSP PLUS 3.600 PF 0,9 | EVO DSP PLUS 5.500 PF 0,9   |
|--|---|---------------------------|---------------------------|---|
| Code   | FGCEDP1202IEC   | FGCEDP2402IEC             | FGCEDP3602IEC             | FGCEDP5502MM  |
| Nominal Power  | 1.200 VA  | 2.400 VA                  | 3.600 VA                  | 5.5 KVA   |
| Active Power   | 1.080 W   | 2.160 W                   | 3.240 W                   | 4.950 W   |
| Power factor   | 0,9   |                           |                           |   |
| Technology   | On-Line Double Conversion transformerless (VFI-SS-111)  |                           |                           |   |
| Cooling  | Cooling fan   |                           |                           |   |
| Audible noise  | < 45 dBA to 1 m   |                           |                           |   |
| Dimension UPS LxHxP  | 14,5x22x28,2 cm   | 14,5x22x39,7 cm           | 19x31,8x42,1 cm           | < 48 dBA a 1 m  |
| Dimension (with packing) LxHxP   | 23x33x37 cm   | 23x33x48 cm               | 33x46x56 cm               | 19x57,3x36,9 cm   |
| Weight   | 10 Kg   | 17 Kg                     | 27 Kg                     | 33x83,5x50,5 cm   |
| Input  |   |                           |                           |   |
| Number of phases   | 1Ph+N   |                           |                           |   |
| Nominal voltage  | 208Vac/220Vac/230Vac/240Vac   |                           |                           |   |
| Input voltage range  | 110-300Vac  |                           |                           | 176Vac-300Vac from 50% to 100% load, 110Vac-300Vac up to 50% load |
| Nominal frequency  | 50/60 Hz (selectable)   |                           |                           |   |
| Input frequency range (On-Line mode)                                     | +/- 7%  |                           |                           |   |
| Input power factor   | 0,99  |                           |                           |   |
| Output   |   |                           |                           |   |
| Number of phases   | 1Ph+N   |                           |                           |   |
| Nominal voltage  | 208Vac/220Vac/230Vac/240Vac (selectable)  |                           |                           |   |
| Static voltage Regulation at %100 linear load (On-Line and battery mode) | ±1%   |                           |                           |   |
| Voltage THD at rated linear load   | <2% (linear load) <8% (non-linear load)   |                           |                           | <3% (linear load), <5% (non-linear load)                          |
| Crest factor   | 5:1   |                           |                           | 3:1   |
| Frequency  | 50/60 Hz (selectable)   |                           |                           |   |
| Free running frequency   | ±0,2 Hz   |                           |                           | ±0,1 Hz   |
| Inverter waveform  | Sinewave  |                           |                           |   |
| Overload capability (on-line mode)                                       | 110% only audible warning, 110-130% for 30 s, >130% for 100 ms  |                           |                           | 110% for 30 minutes, 130% for 5 minutes, >130% for 10             |
| Overload capability (battery mode)                                       | 110% only audible warning, 110-130% for 30 s, >130% for 100 ms  |                           |                           | 110% for 3 minutes, 130% for 30 seconds, >130% for 10 seconds     |
| Efficiency   | 94%, calculated in double conversion method 100% load according to standard 62040-3                               |                           |                           |   |
| Transfer time  | 0 ms (On-Line)  |                           |                           |   |
| Battery  |   |                           |                           |   |
| Type   | Lead acid, sealed, maintenance free   |                           |                           |   |
| Extended autonomy  | -   |                           |                           | External Battery Box (optional)                                   |
| Environmental specification  |   |                           |                           |   |
| Working temperature  | From 0 to 55 °C (recommended from 20 to 25 °C)  |                           |                           |   |
| Humidity   | < 95% without condensation  |                           |                           |   |
| Maximum altitude   | 3000 m  |                           |                           |   |
| IP protection  | IP20  |                           |                           |   |
| Certifications   | CE (Standards: Low Voltage Directive IEC EN 62040-1; EMC Directive IEC EN 62040-2; classification IEC EN 62040-3) |                           |                           |   |

© 2025 Tecnoware Power Systems. The technical data may change without prior notice.

### Accessories

| Model                                      | Code         |
|--|--------------|
| Bypass Box for UPS from 1.2 KVA to 3.6 KVA | FGCBYP1EC    |
| Bypass Box for UPS from 5.5 KVA            | FGCBYP10MM2  |
| Dry Contact DB9 Interface                  | FGCEVODSDRY3 |

| Model                       | Code         |
|-----------------------------|--------------|
| Dry Contact 9 PIN Interface | FGCEVODSDRY4 |
| SNMP Internal Interface     | FGCNETAG7    |
| ModBus RS485 Interface      | FGCMODBUS    |





- 1 Connector for the UPS Battery Box connection   2 Extra Battery Box connector   3 Power socket for the battery charger circuit  
4 Thermal Fuse protecting the battery charger circuit   5 Thermal switch for battery circuit

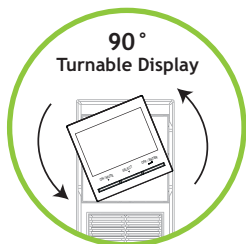
#### Main Specifications

- Internal battery charger on every unit
- Units can be expanded infinitely
- Batteries with thermal circuit protection
- Easy connection to UPS
- Convertible format (Tower or Rack 19")

#### Specifications

| Model                          | BATTERY BOX FOR EVO DSP PLUS 3.600              |                 |
|--------------------------------|---|-----------------|
| Code                           | FBBEDP3602RT/09                                 | FBBEDP3602RT/18 |
| Positioning                    | Into Tower or 19" Rack cabinet (2U) positioning |                 |
| Dimension (Box) WxHxD          | 43,8x8,8x63 cm                                  |                 |
| Dimension (with packing) WxHxD | 60x24x75 cm                                     |                 |
| Weight                         | 30 Kg   | 43 Kg           |
| Battery                        |   |                 |
| Type                           | Lead acid, sealed, maintenance free             |                 |
| Internal Battery Charger       |   |                 |
| Nominal input voltage          | 230Vac  |                 |
| Nominal input frequency        | 50/60Hz   |                 |
| Nominal charging voltage       | 82,2Vdc   |                 |
| Max charging current           | 1A  |                 |
| Protection                     |   |                 |
| Battery charge input           | Thermal fuse                                    |                 |
| Battery circuit                | Magnetothermic switch                           |                 |
| Environmental specification    |   |                 |
| Working temperature            | From 0 to 55 °C (recommended from 20 to 25 °C)  |                 |
| Humidity                       | < 95% without condensation                      |                 |
| Maximum altitude               | 3000 m  |                 |
| IP protection                  | IP20  |                 |
| Certifications                 | CE  |                 |

© 2025 Tecnoware Power Systems. The technical data may change without prior notice.



POWER FACTOR 0,9



Ups Evo DSP PLUS 1.200 Rack Tower PF 0,9



Ups Evo DSP MM 2.400 Rack Tower PF 0,9



Ups Evo DSP MM 3.600 Rack Tower PF 0,9



- 1 Input socket 2 Input Thermal protection 3 IEC320 C13 output sockets with Blackout protection 4 IEC320 C19 output socket with Blackout protection  
5 USB port 6 RS232 port 7 Slot for SNMP, Dry Contact or MODBUS interface 8 EPO connector 9 Connector for additional Battery Box

## Main Specifications

- For Local Area Network (LAN), Data Centers, Industrial equipment, Electromedical equipment
- Convertible format (Tower or Rack 19") with adjustable display
- Power Factor 0,9
- Rectifier realized by IGBT technology
- Compatible with Generators
- Battery charging system controlled by microprocessor
- Hot Swap Battery
- Static Bypass
- Intelligent slot for SNMP or Dry Contact card or MODBUS
- High efficiency and low operating cost
- UPS Management Software TecnoManager compatible with Windows, Mac OS X, Unix, Linux, etc.

HIGH EFFICIENCY  
94%

## Specifications

| UPS Model  | EVO DSP PLUS 1.200 RACK TOWER PF 0,9  | EVO DSP PLUS 2.400 RACK TOWER PF 0,9 | EVO DSP PLUS 3.600 RACK TOWER PF 0,9 |
|--|---|--------------------------------------|--------------------------------------|
| Code   | FGCEDP1202RTIEC   | FGCEDP2402RTIEC                      | FGCEDP3602RTIEC                      |
| Nominal Power  | 1.200 VA  | 2.400 VA                             | 3.600 VA                             |
| Active power   | 1.080 W   | 2.160 W                              | 3.240 W                              |
| Power factor   | 0,9   |                                      |                                      |
| Technology   | On-Line Double Conversion transformerless (VFI-SS-111)  |                                      |                                      |
| Cooling  | Fan cooling   |                                      |                                      |
| Audible noise  | < 45 dBA to 1 m   |                                      |                                      |
| Positioning  | Tower positioning or Into 19" rack (2U)   |                                      |                                      |
| Dimension UPS LxHxP  | 43,8x8,8x31 cm  | 43,8x8,8x41 cm                       | 43,8x8,8x63 cm                       |
| Dimension (with packing) LxHxP   | 50x18x40 cm   | 56x18x50 cm                          | 76x20x60 cm                          |
| Weight   | 12 Kg   | 19 Kg                                | 29 Kg                                |
| Input  |   |                                      |                                      |
| Number of phases   | 1Ph+N   |                                      |                                      |
| Nominal voltage  | 208Vac/220Vac/230Vac/240Vac   |                                      |                                      |
| Input voltage range  | 110-300Vac  |                                      |                                      |
| Nominal frequency  | 50/60 Hz (selectable)   |                                      |                                      |
| Input frequency range (On-Line mode)                                     | +/- 7%  |                                      |                                      |
| Input power factor   | 0,99  |                                      |                                      |
| Output   |   |                                      |                                      |
| Number of phases   | 1Ph+N   |                                      |                                      |
| Nominal voltage  | 208Vac/220Vac/230Vac/240Vac (selectable)  |                                      |                                      |
| Static voltage Regulation at %100 linear load (On-Line and battery mode) | ±1%   |                                      |                                      |
| Voltage THD at rated linear load   | <2% (linear load), <8% (non-linear load)  |                                      |                                      |
| Crest factor   | 3:1   |                                      |                                      |
| Frequency  | 50/60 Hz (selectable)   |                                      |                                      |
| Free running frequency   | ±0,2 Hz   |                                      |                                      |
| Inverter waveform  | Sinewave  |                                      |                                      |
| Overload capability  | 110% only audible warning, 110-130% for 30 sec, >130% for 100 ms  |                                      |                                      |
| Efficiency   | 94%, calculated in double conversion metod 100% load according to standard 62040-3                                |                                      |                                      |
| Transfer time  | 0 ms (On-Line)  |                                      |                                      |
| Battery  |   |                                      |                                      |
| Type   | Lead acid, sealed, maintenance free   |                                      |                                      |
| Backup time (Typical)  | 10-30 min   |                                      |                                      |
| Extended autonomy  | -   | External Battery Box (optional)      |                                      |
| Environmental specification  |   |                                      |                                      |
| Working temperature  | From 0 to 55 °C (recommended from 20 to 25 °C)  |                                      |                                      |
| Humidity   | < 95% without condensation  |                                      |                                      |
| Maximum altitude   | 3000 m  |                                      |                                      |
| IP protection  | IP20  |                                      |                                      |
| Certifications   | CE (Standards: Low Voltage Directive IEC EN 62040-1; EMC Directive IEC EN 62040-2; classification IEC EN 62040-3) |                                      |                                      |

© 2025 Tecnoware Power Systems. The technical data may change without prior notice.

## Accessories

| Model   | Code         |
|---|--------------|
| Bypass Box for UPS RT from 1.2 KVA to 3.6 KVA | FGCBYPIEC    |
| Dry Contact DB9 Interface                     | FGCEVODSDRY3 |
| Dry Contact 9 PIN Interface                   | FGCEVODSDRY4 |

| Model                                   | Code        |
|---|-------------|
| SNMP Internal Interface                 | FGCNETAG7   |
| ModBus RS485 Interface                  | FGCMODBUS   |
| Kit 2 shelves for UPS Rack Installation | FGCKITEVORT |







- 1 Connector for the UPS Battery Box connection 2 Extra Battery Box connector 3 Power socket for the battery charger circuit  
4 Thermal Fuse protecting the battery charger circuit 5 Thermal switch for battery circuit

Main Specifications

- Internal battery charger on every unit
- Units can be expanded infinitely
- Batteries with thermal circuit protection
- Easy connection to UPS
- Convertible format (Tower or Rack 19")

Specifications

| Model                              | BATTERY BOX FOR EVO DSP PLUS 3.600 RACK TOWER PF 0,9 |                 |
|------------------------------------|--|-----------------|
| Code                               | FBBEDP3602RT/09                                      | FBBEDP3602RT/18 |
| Positioning                        | Into Tower or 19" Rack cabinet (2U) positioning      |                 |
| Dimension (Box) WxHxD              | 43,8x8,8x63 cm                                       |                 |
| Dimension (with packing) WxHxD     | 60x24x75 cm  |                 |
| Weight                             | 30 Kg  | 43 Kg           |
| <b>Battery</b>                     |  |                 |
| Type                               | Lead acid, sealed, maintenance free                  |                 |
| <b>Internal Battery Charger</b>    |  |                 |
| Nominal input voltage              | 230Vac   |                 |
| Nominal input frequency            | 50/60Hz  |                 |
| Nominal charging voltage           | 82,2Vdc  |                 |
| Max charging current               | 1A   |                 |
| <b>Protection</b>                  |  |                 |
| Battery charge input               | Thermal fuse   |                 |
| Battery circuit                    | Magnetothermic switch                                |                 |
| <b>Environmental specification</b> |  |                 |
| Working temperature                | From 0 to 55 °C (recommended from 20 to 25 °C)       |                 |
| Humidity                           | < 95% without condensation                           |                 |
| Maximum altitude                   | 3000 m   |                 |
| IP protection                      | IP20   |                 |
| Certifications                     | CE   |                 |

© 2025 Tecnoware Power Systems. The technical data may change without prior notice.

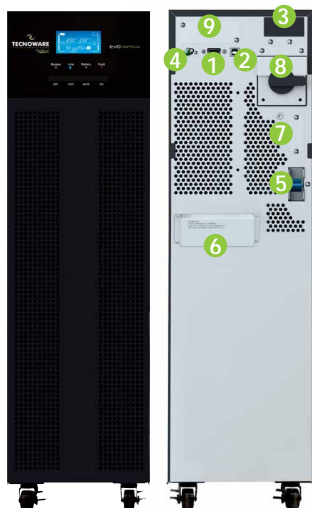
# UPS EVO DSP PLUS PF 1

## 6-10

Together on

POWER  
FACTOR

1



Ups Evo DSP Plus 6.0-10.0 PF 1

- 1 RS232 port 2 USB port 3 Slot for SNMP interface, Dry Contact or MODBUS 4 EPO connector 5 Switch mains input 6 Input/output terminal block  
7 Connector for external Battery Box 8 Manual bypass switch for maintenance 9 Interface for parallel connection

### Main Specifications

- Local Area Network (LAN), Data Centers, Industrial equipment, Electromedical equipment
- Power factor 1
- Rectifier realized by IGBT technology
- Compatible with generators
- Battery charging system controlled by microprocessor
- Extension Back-up time by external Battery box
- Static and Manual Bypass
- Expandable up to 2 units in parallel
- UPS Management Software TecnoManager compatible with Windows, Mac OS X, Unix, Linux, etc.

HIGH  
EFFICIENCY  
94%

### Specifications

| Modello UPS   | EVO DSP PLUS 6.0 PF 1   |              |              |              | EVO DSP PLUS 10.0 PF 1 |               |               |               |
|---|---|--------------|--------------|--------------|------------------------|---------------|---------------|---------------|
| Codice  | FGCEDP6MM2/00   | FGCEDP6MM2/C | FGCEDP6MM2/D | FGCEDP6MM2/E | FGCEDP10MM2/00         | FGCEDP10MM2/C | FGCEDP10MM2/D | FGCEDP10MM2/E |
| Nominal power   | 6 KVA   |              |              |              | 10 KVA                 |               |               |               |
| Active power  | 6 KW  |              |              |              | 10 KW                  |               |               |               |
| Power factor  | 1   |              |              |              | 1                      |               |               |               |
| Technology  | On-Line Double Conversion transformerless (VFI-SS-111)  |              |              |              |                        |               |               |               |
| Cooling   | Fan cooling   |              |              |              |                        |               |               |               |
| Audible noise   | < 55 dBA to 1 m   |              |              |              | < 58 dBA to 1 m        |               |               |               |
| Dimension (UPS) WxHxD   | 19x68,8x36,9 cm   |              |              |              | 19x68,8x44,2 cm        |               |               |               |
| Dimension (with packing) WxHxD                                    | 32x92,2x51,4 cm   |              |              |              | 32x92,2x58,7 cm        |               |               |               |
| Weight  | 18 Kg   | 57 Kg        | 62 Kg        | 65 Kg        | 23 Kg                  | 62 Kg         | 67 Kg         | 70 Kg         |
| <b>Input</b>  |   |              |              |              |                        |               |               |               |
| Number of phases  | 1Ph+N   |              |              |              |                        |               |               |               |
| Nominal voltage   | 208Vac/220Vac/230Vac/240Vac   |              |              |              |                        |               |               |               |
| Input voltage range   | 176Vac-300Vac from 50% to the 100% of loading, 110Vac-300Vac up to 50% load                                       |              |              |              |                        |               |               |               |
| Nominal frequency   | 50/60 Hz (selectable)   |              |              |              |                        |               |               |               |
| Input frequency range (On-Line mode)                              | ±7%   |              |              |              |                        |               |               |               |
| Input power factor  | 0,99  |              |              |              |                        |               |               |               |
| <b>Output</b>   |   |              |              |              |                        |               |               |               |
| Number of phases  | 1Ph+N   |              |              |              |                        |               |               |               |
| Nominal voltage   | 208Vac/220Vac/230Vac/240Vac   |              |              |              |                        |               |               |               |
| Voltage Regulation at %100 linear load (On-Line and Battery mode) | ±2%   |              |              |              |                        |               |               |               |
| Voltage THD at rated linear load                                  | <3% (linear load), <5% (non-linear load)  |              |              |              |                        |               |               |               |
| Crest factor  | 3:1   |              |              |              |                        |               |               |               |
| Frequency   | 50/60 Hz (selectable)   |              |              |              |                        |               |               |               |
| Frequency stability   | ±0,1 Hz   |              |              |              |                        |               |               |               |
| Inverter waveform   | Sinewave  |              |              |              |                        |               |               |               |
| Overload capability (Line mode)                                   | 110% for 30 minutes, 130% for 5 minutes, >130% for 10 seconds   |              |              |              |                        |               |               |               |
| Overload capability (Battery mode)                                | 110% for 3 minutes, 130% for 30 seconds, >130% for 10 seconds   |              |              |              |                        |               |               |               |
| Efficiency  | 94%, calculated in double conversion mode at 100% load to 100% load according to standard 62040-3                 |              |              |              |                        |               |               |               |
| Transfer time   | 0 ms (On-Line)  |              |              |              |                        |               |               |               |
| <b>Battery</b>  |   |              |              |              |                        |               |               |               |
| Type  | Lead acid, sealed, maintenance free   |              |              |              |                        |               |               |               |
| Installed inside  | -   | 16 elements  |              |              | -                      | 16 elements   |               |               |
| Extended autonomy   | External Battery Box (optional)   |              |              |              |                        |               |               |               |
| <b>Environmental specification</b>                                |   |              |              |              |                        |               |               |               |
| Working temperature   | From 0 to 55 °C (recommended from 20 to 25 °C)  |              |              |              |                        |               |               |               |
| Humidity  | < 95% without condensation  |              |              |              |                        |               |               |               |
| Maximum altitude  | 3000 m  |              |              |              |                        |               |               |               |
| IP protection   | IP20  |              |              |              |                        |               |               |               |
| Certifications  | CE (Standards: Low Voltage Directive IEC EN 62040-1; EMC Directive IEC EN 62040-2; classification IEC EN 62040-3) |              |              |              |                        |               |               |               |

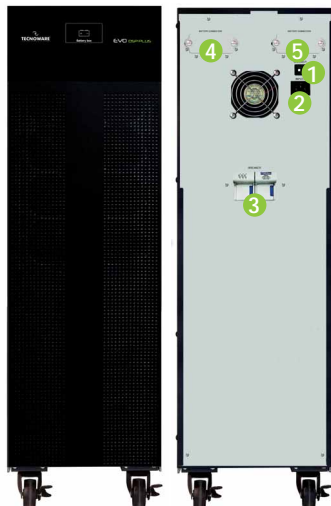
© 2025 Tecnoware Power Systems. The technical data may change without prior notice.

### Accessories

| Model                                    | Code         |
|--|--------------|
| Bypass Box for Evo Dsp Plus 6.0 and 10.0 | FGCBYP10MM2  |
| Dry Contact DB9 Interface                | FGCEVODSDRY3 |
| Dry Contact 9 PIN Interface              | FGCEVODSDRY4 |

| Model                    | Code      |
|--------------------------|-----------|
| SNMP for Evo Dsp Plus MM | FGCNETAG7 |
| ModBus RS485 Interface   | FGCMODBUS |





- ① Thermal Fuse protecting the battery charger circuit    ② Power Socket for the battery charger circuit    ③ Thermal switch for battery circuit  
 ④ Connector for the UPS connection    ⑤ Extra Battery Box connector

### Main Specifications

- Internal battery charger on every unit
- Units can be expanded infinitely
- Batteries with thermal circuit protection
- Easy connection to UPS
- Reduced dimensions
- Easy installation and maintenance

### Specifications

| Model                       | BATTERY BOX FOR EVO DSP PLUS 6.0-10.0 PF 1     |                |                |                |                |                |                |                |                |                |                |                |                |  |
|-----------------------------|--|----------------|----------------|----------------|----------------|----------------|----------------|----------------|----------------|----------------|----------------|----------------|----------------|--|
| Code                        | FBBEVDP192A/00                                 | FBBEVDP192A/07 | FBBEVDP192A/14 | FBBEVDP192A/21 | FBBEVDP192A/28 | FBBEVDP192A/09 | FBBEVDP192A/18 | FBBEVDP192A/27 | FBBEVDP192A/36 | FBBEVDP192A/11 | FBBEVDP192A/22 | FBBEVDP192A/33 | FBBEVDP192A/44 |  |
| Box dimension WxHxD         | 25 x 83,3 x 80 cm                              |                |                |                |                |                |                |                |                |                |                |                |                |  |
| Pack dimension WxHxD        | 38 x 105,8 x 96,5 cm                           |                |                |                |                |                |                |                |                |                |                |                |                |  |
| Weight                      | 49 Kg  | 81,4 Kg        | 107,8 Kg       | 134,2 Kg       | 160,6 kg       | 90,5 kg        | 126 kg         | 161,5 Kg       | 197,1 Kg       | 98,2 Kg        | 141,4 Kg       | 184,6 Kg       | 227,8 Kg       |  |
| Battery                     |  |                |                |                |                |                |                |                |                |                |                |                |                |  |
| Type                        | Lead acid, sealed, maintenance free            |                |                |                |                |                |                |                |                |                |                |                |                |  |
| Internal battery charger    |  |                |                |                |                |                |                |                |                |                |                |                |                |  |
| Nominal input voltage       | 230Vac   |                |                |                |                |                |                |                |                |                |                |                |                |  |
| Nominal input frequency     | 50/60Hz  |                |                |                |                |                |                |                |                |                |                |                |                |  |
| Nominal charging voltage    | 219,2Vdc                                       |                |                |                |                |                |                |                |                |                |                |                |                |  |
| Max charging current        | Selectable                                     | 0,7A           | 1,4A           | 2,1A           | 2,8A           | 0,9A           | 1,8A           | 2,7A           | 3,6A           | 1,1A           | 2,2A           | 3,3A           | 4,4A           |  |
| Protection                  |  |                |                |                |                |                |                |                |                |                |                |                |                |  |
| Battery charge input        | Thermal fuse                                   |                |                |                |                |                |                |                |                |                |                |                |                |  |
| Battery circuit             | Magnetothermic switch                          |                |                |                |                |                |                |                |                |                |                |                |                |  |
| Environmental specification |  |                |                |                |                |                |                |                |                |                |                |                |                |  |
| Working temperature         | From 0 to 55 °C (recommended from 20 to 25 °C) |                |                |                |                |                |                |                |                |                |                |                |                |  |
| Humidity                    | < 95% without condensation                     |                |                |                |                |                |                |                |                |                |                |                |                |  |
| Maximum altitude            | 3000 m   |                |                |                |                |                |                |                |                |                |                |                |                |  |
| IP protection               | IP20   |                |                |                |                |                |                |                |                |                |                |                |                |  |
| Certifications              | CE   |                |                |                |                |                |                |                |                |                |                |                |                |  |

© 2025 Tecnoware Power Systems. The technical data may change without prior notice.



UPS Evo DSP Plus RM 6.0-10.0 PF 1

POWER  
FACTOR 1

- 1 LCD display 2 LED status light 3 Multifunction buttons 4 USB port 5 RS232 port 6 EPO connector 7 Slot for SNMP, Dry Contact or MODBUS  
8 Input/output Terminal Box 9 Input network switch 10 Battery Box connector 11 Interface for parallel connection

**Main Specifications**

- For Local Area Network (LAN), Data Centers
- Power factor 1
- Rectifier realized by IGBT technology
- Compatible with Generators
- Battery charging system controlled by microprocessor
- Static Bypass
- Expandable up to 2 units in parallel
- UPS Management Software TecnoManager compatible with Windows, Mac OS X, Unix, Linux, etc.

HIGH  
EFFICIENCY  
94%**Specifications**

| UPS Model   | EVO DSP PLUS 6.0 RACK MOUNT PF 1  | EVO DSP PLUS 10.0 RACK MOUNT PF 1 |
|---|---|-----------------------------------|
| Code  | FGCEDP6MM2RM/00   | FGCEDP10MM2RM/00                  |
| Nominal power   | 6 KVA   | 10 KVA                            |
| Active power  | 6 KW  | 10 KW                             |
| Power factor  | 1   |                                   |
| Technology  | On-Line Double Conversion transformerless (VFI-SS-111)  |                                   |
| Cooling   | Fan cooling   |                                   |
| Audible noise   | < 48 dBA to 1 m   |                                   |
| Dimension (UPS) WxHxD   | 43.8x8.8x51.5 (2U)  |                                   |
| Dimension (with packing) WxHxD                                    | 59x22x71 cm   |                                   |
| Weight  | 11 Kg   | 13 Kg                             |
| Equipped with   | 1 serial cable, Tecnomanager software and 2 metal handle for 19" Rack cabinet mounting                            |                                   |
| Input   |   |                                   |
| Number of phases  | 1Ph+N   |                                   |
| Nominal voltage   | 208Vac/220Vac/230Vac/240Vac   |                                   |
| Input voltage range   | 176Vac-300Vac from 50% to 100% load, 110Vac-300Vac from to 50% load   |                                   |
| Nominal frequency   | 50/60 Hz (selectable)   |                                   |
| Input frequency range On-Line mode                                | ±7%   |                                   |
| Input power factor  | 0,99  |                                   |
| Output  |   |                                   |
| Number of phases  | 1Ph+N   |                                   |
| Nominal voltage   | 208Vac/220Vac/230Vac/240Vac   |                                   |
| Voltage Regulation at %100 linear load (On-Line and Battery mode) | ±1%   |                                   |
| Voltage THD   | <3% (linear load), <6% (non-linear load)  |                                   |
| Crest factor  | 3:1   |                                   |
| Frequency   | 50/60 Hz (selectable)   |                                   |
| Frequency stability   | ±0,1 Hz   |                                   |
| Inverter waveform   | Sinewave  |                                   |
| Overload capability (Line mode)                                   | 110% for 10 minutes, 130% for 1 minute, >130% for 1 second  |                                   |
| Overload capability (Battery mode)                                | 110% for 30 seconds, 130% for 10 seconds, >130% for 1 second  |                                   |
| Efficiency  | 94%, calculated in double conversion mode at 100% load to 100% load according to standard 62040-3                 |                                   |
| Transfer time   | 0 ms (On-Line)  |                                   |
| Output connections  | Terminal block  |                                   |
| Battery (fitted inside the external Battery Box)                  |   |                                   |
| Batteries number  | 16 (inside the external Battery Box, for UPS operation)   |                                   |
| Battery charge time (typical)                                     | 6-8 hours   |                                   |
| Extended autonomy   | External Battery Box (optional)   |                                   |
| Environmental specification                                       |   |                                   |
| Working temperature   | Da 0 a 55 °C (recommended from 20 to 25 °C)   |                                   |
| Humidity  | < 95% without condensation  |                                   |
| Maximum altitude  | 3000 m  |                                   |
| IP protection   | IP20  |                                   |
| Certifications  | CE (standards: Low Voltage Directive IEC EN 62040-1; EMC Directive IEC EN 62040-2; classification IEC EN 62040-3) |                                   |

© 2025 Tecnoware Power Systems. The technical data may change without prior notice.

**Accessories**

| Model   | Code         |
|---|--------------|
| Bypass Box for Evo Dsp Plus Rack Mount 6.0 and 10.0 | FGCBYP10MMRM |
| Dry Contact DB9 Interface                           | FGCEVODSDRY3 |
| Dry Contact 9 PIN Interface                         | FGCEVODSDRY4 |
| SNMP for Ups Evo Dsp Plus                           | FGCNETAG7    |
| ModBus RS485 Interface                              | FGCMODBUS    |
| Kit 2 shelves for UPS Rack Installation             | FGCKITEVORT  |



- 1 Thermal protection for battery charger circuit 2 Power socket for the battery charger circuit 3 Thermal switch for battery circuit  
4 Connector for the UPS connection 5 Extra Battery Box connector

#### Main Specifications

- Internal battery charger on every unit
- Units can be expanded infinitely
- Batteries with thermal circuit protection
- Easy connection to UPS
- Hot Swap batteries
- Rack format 19", height 3U
- Packaging containing separate Battery Box and Battery Pack

#### Specifications

| Model                       | BATTERY BOX FOR EVO DSP PLUS 6.0-10.0 RACK MOUNT PF 1 |               |               |               |
|-----------------------------|---|---------------|---------------|---------------|
| Code                        | FBBEVDR192/00   | FBBEVDR192/07 | FBBEVDR192/09 | FBBEVDR192/11 |
| Box dimension WxHxD         | 43,8 x 13,3 x 66,8 cm (3U)                            |               |               |               |
| Pack dimension WxHxD        | 59 x 26 x 87,5 cm                                     |               |               |               |
| Weight                      | 10 Kg   | 49 Kg         | 53 Kg         | 56 Kg         |
| Battery                     |   |               |               |               |
| Type                        | Lead acid, sealed, maintenance free                   |               |               |               |
| Internal battery charger    |   |               |               |               |
| Nominal input voltage       | 230Vac  |               |               |               |
| Nominal input frequency     | 50/60Hz   |               |               |               |
| Nominal voltage             | 219Vdc  |               |               |               |
| Max charging current        | Selectable  | 0,7A          | 0,9A          | 1,1A          |
| Protection                  |   |               |               |               |
| Battery charge input        | Thermal fuse  |               |               |               |
| Battery circuit             | Magnetothermic switch                                 |               |               |               |
| Environmental specification |   |               |               |               |
| Working temperature         | From 0 to 55 °C (recommended from 20 to 25 °C)        |               |               |               |
| Humidity                    | < 95% without condensation                            |               |               |               |
| Maximum altitude            | 3000 m  |               |               |               |
| IP protection               | IP20  |               |               |               |
| Certifications              | CE  |               |               |               |

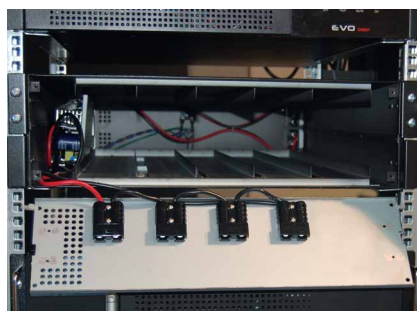
© 2025 Tecnoware Power Systems. The technical data may change without prior notice.

#### Easy installation



The Battery Box and Battery Pack are supplied separately in the packaging for an easy installation.

So the total weight is divided into several parts, making it easier to install.



A single operator can easily install the Battery Box inside the UPS and then the battery pack.



LOCAL AREA NETWORK



DATA CENTER

**EASY HOT SWAP DESIGN**

The innovative Design Hot Swap and the complete independence of each module allow a simple and quick maintenance and possible expansions of power and autonomy.

**FLEXIBLE MODULAR DESIGN**

Scalable architecture allow to easily increase power (from 20KVA to 300KVA), redundancy level (N+1 or N+X) and Back-Up time by simply additional UPS modules and Battery cabinet. All this allows to optimize the investment.

**NO-DOWNTIME SYSTEM**

The Redundance configuration and Hot Swap Design ensure always full power also in case of failure and replacement of module or scheduled maintenance. All this features guarantee low MTTR (Mean Time To Repair).

POWER  
FACTOR

1

HIGH  
EFFICIENCY  
96,5%

For Data Centers, Local Area Network (LAN), Industrial equipment, Electromedical equipment

10" touch LCD display

Compatible with Generators

Power Factor 1

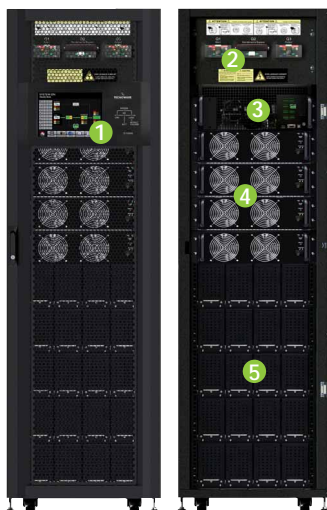
Frequency converter

Shared Battery Cabinet

Battery module up to 120 KVA contained in the same cabinet

High MTBF and low MTTR

UPS Management Software TecnoManager compatible with Windows, Mac OS X, Unix, Linux, etc.



- 1 10" touch LCD display
- 2 Input / Output, Maintenance Bypass, Breakers
- 3 STS Module Includes Communication Ports
- 4 Power Module
- 5 Battery Module

**Ease of installation and maintenance**

Built-in maintenance bypass assures continuous power to critical loads during UPS maintenance.



Easy installation and maintenance, panel control and connectors with frontal accessibility.

Find more information here



[www.tecnaware.com/tec/pdf/Sch.Tec.EVO\\_DSP\\_PLUS\\_Modular\\_400\\_ENG.pdf](http://www.tecnaware.com/tec/pdf/Sch.Tec.EVO_DSP_PLUS_Modular_400_ENG.pdf)





## FLEXIBLE BACK-UP TIME CONFIGURATION

Battery box with scalable architecture and Hot Swap design to increase Back-Up time and for easy battery maintenance.

REDUNDANT  
POWER SUPPLY IN STS

NO RISK  
OF SHUTDOWN



Battery Module

|                          | MODULE for UPS EVO DSP PLUS MODULAR PF1 (400Vac) |              |
|--------------------------|--|--------------|
| Code                     | FGCEVDPM20TT                                     | FGCEVDPM30TT |
| Nominal power            | 20KVA  | 30KVA        |
| Active power             | 20KW   | 30KW         |
| Dimensions WxHxD         | 44x13,2x65 cm (3U)                               |              |
| Input                    |  |              |
| Nominal Voltage          | 360Vac/380Vac/400Vac/415Vac (3Ph+N)              |              |
| Output                   |  |              |
| Nominal Voltage          | 360Vac/380Vac/400Vac/415Vac (3Ph+N)              |              |
| Battery                  |  |              |
| Nominal Voltage          | +/- 240Vdc (12Vdc x 40 pz)                       |              |
| Maximum Charging Current | 6A   | 8A           |

30KVA UPS Module  
(400Vac)20KVA UPS Module  
(400Vac)

## Configuration



|   | UPS EVO DSP PLUS MODULAR PF1 (400Vac) CABINET |                 |                 |                 |   |                 |
|---|---|-----------------|-----------------|-----------------|---|-----------------|
| Code  | FGCEVDPM30B90K                                | FGCEVDPM30B120K | FGCEVDPM30B180K | FGCEVDPM42B120K | FGCEVDPM42B210K   | FGCEVDPM42B300K |
| Height  | 30U   | 30U             | 30U             | 42U             | 42U   | 42U             |
| STS Capacity  | 90KW  | 120KW           | 180KW           | 120KW           | 210KW   | 300KW           |
| Type of installable UPS Module                        | 30KW or 20KW                                  |                 |                 |                 |   |                 |
| Max. number of installable UPS Module                 | 3   | 4               | 6               | 4               | 8   | 10              |
| Battery Modules layers (4 Battery Modules each layer) | 3 (12 Modules)                                | -               | -               | 5 (20 Modules)  | -   | -               |
| Max. capacity of installing 20KVA Module              | 60KW/60KVA                                    | 80KW/80KVA      | 120KW/120KVA    | 80KW/80KVA      | 160KW/160KVA<br>210KW/210KVA<br>(If installed with 8 pcs,<br>1 is for redundancy) | 200KW/200KVA    |
| Max. capacity of installing 30KVA Module              | 90KW/90KVA                                    | 120KW/120KVA    | 180KW/180KVA    | 120KW/120KVA    |   | 300KW/300KVA    |

PARALLELABLE  
SYSTEM

## Configuration



|   | UPS EVO DSP PLUS MODULAR PF1 (400Vac) CABINET |                 |                 |
|---|---|-----------------|-----------------|
| Code  | FGCEVDPM30A80K                                | FGCEVDPM30A120K | FGCEVDPM42A200K |
| Height  | 30U   | 30U             | 42U             |
| STS Capacity  | 80KW  | 120KW           | 200KW           |
| Type of installable UPS Module                        | 20KW  |                 |                 |
| Max. number of installable UPS Module                 | 4   | 6               | 10              |
| Battery Modules layers (4 Battery Modules each layer) | -   |                 |                 |
| Max. capacity of installing HV 20KVA Module           | 80KW/80KVA                                    | 120KW/120KVA    | 200KW/200KVA    |



10" touch LCD display

© 2025 Tecnoware Power Systems. The technical data may change without prior notice.

# EVO DSP PLUS MODULAR 208 VAC PF 1

## 20-140

*Together on*

LOCAL AREA NETWORK



DATA CENTER



### EASY HOT SWAP DESIGN

The innovative Design Hot Swap and the complete independence of each module allow a simple and quick maintenance and possible expansions of power and autonomy.

### FLEXIBLE MODULAR DESIGN

Scalable architecture allow to easily increase power (from 20KVA to 140KVA), redundancy level (N+1 or N+X) and Back-Up time by simply additional UPS modules and Battery cabinet. All this allows to optimize the investment.

### NO-DOWNTIME SYSTEM

The Redundance configuration and Hot Swap Design ensure always full power also in case of failure and replacement of module or scheduled maintenance. All this features guarantee low MTTR (Mean Time To Repair).

POWER FACTOR

1

HIGH EFFICIENCY  
96,5%

For Data Centers, Local Area Network (LAN), Industrial equipment, Electromedical equipment

10" touch LCD display

Compatible with Generators

Power Factor 1

Frequency converter

Shared Battery Cabinet

High MTBF and low MTTR

UPS Management Software TecnoManager compatible with Windows, Mac OS X, Unix, Linux, etc.



Evo Dsp Plus Modular 208 Vac PF1

- 1 10" touch LCD display
- 2 Input/Output Switches and Maintenance Bypass
- 3 STS Module and Communication Ports
- 4 Power Module

### Ease of installation and maintenance

Built-in maintenance bypass assures continuous power to critical loads during UPS maintenance.



Easy installation and maintenance, panel control and connectors with frontal accessibility.

# EVO DSP PLUS MODULAR 208 VAC PF 1

## 20-140

*Together on*

|                          | MODULE for UPS EVO DSP PLUS MODULAR PF1 (208Vac) |
|--------------------------|--|
| Code                     | FGCEDPM20TT208                                   |
| Nominal power            | 20KVA  |
| Active power             | 20KW   |
| Dimension WxHxD          | 73,65x13,3x49 cm (3U)                            |
| <b>Input</b>             |  |
| Nominal voltage          | 3 x 208Vac/220Vac (3Ph+N)                        |
| <b>Output</b>            |  |
| Nominal voltage          | 3 x 208Vac/220Vac (3Ph+N)                        |
| <b>Battery</b>           |  |
| Nominal voltage          | +/- 120Vdc (12Vdc x 20 pz)                       |
| Maximum Charging Current | 8A   |

© 2025 Tecnoware Power Systems. The technical data may change without prior notice.

**REDUNDANT  
POWER SUPPLY IN STS**
**NO RISK  
OF SHUTDOWN**

**UPS 20KVA Module  
(208Vac)**
**PARALLELABLE  
SYSTEM**

**Configuration**

|  | UPS EVO DSP PLUS MODULAR PF1 (208Vac) CABINET |                    |   |
|--|---|--------------------|---|
| Code                                     | FGCEDPM30A80K208                              | FGCEDPM30A120K208  | FGCEDPM42A140K208   |
| Height                                   | 30U   | 30U                | 42U   |
| STS Power                                | 80KW  | 120KW              | 140KW   |
| Type of installable UPS Module           |   | 20KW               |   |
| Max. number of installable UPS Module    | 4   | 6                  | 7+1   |
| Max. capacity of installing 20KVA Module | 20-80KW/20-80KVA                              | 20-120KW/20-120KVA | 20-140KW/20-140KVA<br>(If installed with 8 pcs,<br>1 is for redundancy) |

© 2025 Tecnoware Power Systems. The technical data may change without prior notice.


**10" touch LCD display**

Find more information here


[www.tecnoware.com/tec/pdf/Sch.Tec.EVO\\_DSP\\_PLUS\\_Modular\\_208\\_ENG.pdf](http://www.tecnoware.com/tec/pdf/Sch.Tec.EVO_DSP_PLUS_Modular_208_ENG.pdf)

# EVO DSP PLUS MODULAR 480 VAC PF1 70-700

*Together on*

LOCAL AREA NETWORK



DATA CENTER



## EASY HOT SWAP DESIGN

The innovative Design Hot Swap and the complete independence of each module allow a simple and quick maintenance and possible expansions of power and autonomy.

## FLEXIBLE MODULAR DESIGN

Scalable architecture allow to easily increase power (from 70KVA to 700KVA), redundancy level (N+1 or N+X) and Back-Up time by simply additional UPS modules and Battery cabinet. All this allows to optimize the investment.

## NO-DOWNTIME SYSTEM

The Redundance configuration and Hot Swap Design ensure always full power also in case of failure and replacement of module or scheduled maintenance. All this features guarantee low MTTR (Mean Time To Repair).

POWER  
FACTOR

1

HIGH  
EFFICIENCY  
96,5%

For Data Centers, Local Area Network (LAN), Industrial equipment, Electromedical equipment

10" touch LCD display

Compatible with Generators

Power Factor 1

Frequency converter

Shared Battery Cabinet

High MTBF and low MTTR

UPS Management Software TecnoManager compatible with Windows, Mac OS X, Unix, Linux, etc.



Evo Dsp Plus Modular 480 Vac PF1  
350 KW



Evo Dsp Plus Modular 480 Vac PF1  
700 KW

- 1 10" touch LCD display 2 Input/Output Switches and Maintenance Bypass 3 STS Module and Communication Ports  
4 Power Module

## Ease of installation and maintenance

Built-in maintenance bypass assures continuous power to critical loads during UPS maintenance.



Easy installation and maintenance, panel control and connectors with frontal accessibility.



# EVO DSP PLUS MODULAR 480 VAC PF1

## 70-700

*Together on*



### FLEXIBLE BACK-UP TIME CONFIGURATION

Battery box with scalable architecture and Hot Swap design to increase Back-Up time and for easy battery maintenance.



Battery Module

REDUNDANT  
POWER SUPPLY IN STS

NO RISK  
OF SHUTDOWN

| MODULE for UPS EVO DSP PLUS MODULAR PF1 (480Vac) |                            |
|--|----------------------------|
| Code   | FGCEDPM70TT480             |
| Nominal power                                    | 70KVA                      |
| Active power                                     | 70KW                       |
| Dimension WxHxD                                  | 75x13x43,8cm (3U)          |
| <b>Input</b>                                     |                            |
| Nominal voltage                                  | 3 x 480Vac (3Ph without N) |
| <b>Output</b>                                    |                            |
| Nominal voltage                                  | 3 x 480Vac (3Ph without N) |
| <b>Battery</b>                                   |                            |
| Nominal voltage                                  | +/- 240Vdc (12Vdc x 40 pz) |
| Maximum Charging Current                         | 18A                        |

© 2025 Tecnoware Power Systems. The technical data may change without prior notice.



UPS 70KVA Module  
(480Vac)

PARALLELABLE  
SYSTEM



10" touch LCD display

#### Configuration

| UPS EVO DSP PLUS MODULAR PF1 (480Vac) CABINET |                    |                    |
|---|--------------------|--------------------|
| Code  | FGCEDPM42A350K480  | FGCEDPM42A700K480  |
| Height  | 42U                |                    |
| STS Power                                     | 350KW              | 700KW              |
| Type of installable UPS Module                | 70KW               |                    |
| Max. number of installable UPS Module         | 5                  | 10                 |
| Max. capacity of installing 70KV Module       | 70-350KW/70-350KVA | 70-700KW/70-700KVA |

Find more information here

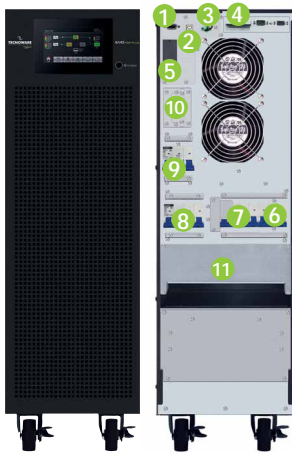


[www.tecnoware.com/tec/pdf/Sch.Tec.EVO\\_DSP\\_PLUS\\_Modular\\_480\\_ENG.pdf](http://www.tecnoware.com/tec/pdf/Sch.Tec.EVO_DSP_PLUS_Modular_480_ENG.pdf)

# UPS EVO DSP PLUS TM PF 1

## 10-20

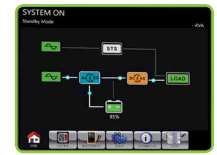
*Together on*



Ups Evo DSP Plus 10-20 TM PF 1

- 1 RS232 port 2 USB port 3 EPO connector 4 Interface for parallel connection 5 Slot for SNMP interface, Dry Contact or MODBUS 6 Input bypass switch  
7 Manual bypass switch for maintenance 8 Output voltage switch 9 Input voltage switch 10 Connector for external Battery Box 11 Input/output terminal box

**POWER FACTOR 1**



DISPLAY LCD  
color touch

### Main Specifications

- For Local Area Network (LAN), Data Centers, Industrial equipment, Electromedical equipment
- Power factor 1
- Double input mains/bypass
- Rectifier realized by IGBT technology

- Compatible with Generators
- Battery recharge system managed by microprocessor
- Static and manual bypass
- Expandable up to 3 units in parallel with shared Box Battery
- UPS Management Software TecnoManager compatible with Windows, Mac OS X, Unix, Linux, etc.

**HIGH EFFICIENCY**  
**96%**

### Specifications

| UPS Model                                     |   |                     |              | EVO DSP PLUS TM 10.0-20.0 PF 1 |                      |                         |               |                               |              |                     |              |
|---|---|---------------------|--------------|--------------------------------|----------------------|-------------------------|---------------|-------------------------------|--------------|---------------------|--------------|
| Code  | FGCEDP10TM/00   | FGCEDP10TM/C        | FGCEDP10TM/D | FGCEDP10TM/E                   | NEW<br>FGCEDP10TM/2C | FGCEDP10TM/2D           | FGCEDP10TM/2E | FGCEDP20TM/00                 | FGCEDP20TM/C | FGCEDP20TM/D        | FGCEDP20TM/E |
| Nominal power                                 |   |                     |              |                                | 10 KVA               |                         |               |                               | 20 KVA       |                     |              |
| Active power                                  |   |                     |              |                                | 10 KW                |                         |               |                               | 20 KW        |                     |              |
| Power Factor                                  | 1   |                     |              |                                |                      |                         |               |                               |              |                     |              |
| Technology                                    | On-Line Double Conversion transformerless (VFI-SS-111)  |                     |              |                                |                      |                         |               |                               |              |                     |              |
| Cooling                                       | Fan cooling   |                     |              |                                |                      |                         |               |                               |              |                     |              |
| Dimension (UPS) WxHxD                         | 25x82,6x63 cm   |                     |              |                                |                      |                         |               |                               |              |                     |              |
| Dimension (with packing) WxHxD                | 38,5x102,5x73,5 cm  |                     |              |                                |                      |                         |               |                               |              |                     |              |
| Weight  | 70Kg  | 116Kg               | 124Kg        | 128Kg                          | 160Kg                | 172Kg                   | 184Kg         | 80Kg                          | 150Kg        | 166Kg               | 173Kg        |
| Input   |   |                     |              |                                |                      |                         |               |                               |              |                     |              |
| Number of phases                              | 3Ph+N   |                     |              |                                |                      |                         |               |                               |              |                     |              |
| Nominal voltage                               | 360Vac/380Vac/400Vac/415Vac   |                     |              |                                |                      |                         |               |                               |              |                     |              |
| Nominal voltage (Ph-N)                        | 208Vac/220Vac/230Vac/240Vac   |                     |              |                                |                      |                         |               |                               |              |                     |              |
| Input voltage range (Ph-N)                    | 176Vac-276Vac to 100% load, 110Vac-300Vac to 50% load   |                     |              |                                |                      |                         |               |                               |              |                     |              |
| Nominal frequency                             | 50/60 Hz  |                     |              |                                |                      |                         |               |                               |              |                     |              |
| Input frequency range On-Line mode            | 46-54 Hz or 56-64 Hz  |                     |              |                                |                      |                         |               |                               |              |                     |              |
| Input current harmonic distortion (THDi)      | ≤4%   |                     |              |                                |                      |                         |               |                               |              |                     |              |
| Input power factor                            | 0,99  |                     |              |                                |                      |                         |               |                               |              |                     |              |
| Output  |   |                     |              |                                |                      |                         |               |                               |              |                     |              |
| Number of phases                              | 1Ph+N   |                     |              |                                |                      |                         |               |                               |              |                     |              |
| Nominal voltage                               | 208Vac/220Vac/230Vac/240Vac   |                     |              |                                |                      |                         |               |                               |              |                     |              |
| Voltage Regulation (On-Line and Battery mode) | ±1%   |                     |              |                                |                      |                         |               |                               |              |                     |              |
| Voltage THD at rated linear load              | <2% (linear load) - <5% (distorting load)   |                     |              |                                |                      |                         |               |                               |              |                     |              |
| Crest factor                                  | 3:1   |                     |              |                                |                      |                         |               |                               |              |                     |              |
| Frequency                                     | 50/60 Hz  |                     |              |                                |                      |                         |               |                               |              |                     |              |
| Frequency stability                           | ±0,1 Hz   |                     |              |                                |                      |                         |               |                               |              |                     |              |
| Inverter waveform                             | Sinewave  |                     |              |                                |                      |                         |               |                               |              |                     |              |
| Overload capability (On-line mode)            | 100-110% for 60 minutes, 100-125% for 10 minutes,125-150% for 1 minute, >150 immediate                            |                     |              |                                |                      |                         |               |                               |              |                     |              |
| Overload capability (Battery mode)            | 100-110% for 60 minutes, 100-125% for 10 minutes,125-150% for 1 minute, >150 immediate                            |                     |              |                                |                      |                         |               |                               |              |                     |              |
| Efficiency                                    | 96%, calculated in double conversion mode at 100% load to 100% load according to standard 62040-3                 |                     |              |                                |                      |                         |               |                               |              |                     |              |
| Transfer time                                 | 0 ms (On-Line)  |                     |              |                                |                      |                         |               |                               |              |                     |              |
| Battery                                       |   |                     |              |                                |                      |                         |               |                               |              |                     |              |
| Type  | Lead acid, sealed, maintenance free   |                     |              |                                |                      |                         |               |                               |              |                     |              |
| Installed inside                              | -   | 20 elements (10+10) |              |                                |                      | 40 elements 2 x (10+10) |               |                               | -            | 32 elements (16+16) |              |
| Extended autonomy                             | External<br>Battery Box (opt)   | -                   |              |                                |                      |                         |               | External<br>Battery Box (opt) |              | -                   |              |
| Environmental specification                   |   |                     |              |                                |                      |                         |               |                               |              |                     |              |
| Working temperature                           | From 0 to 55 °C (recommended from 20 to 25 °C, for longer battery life)   |                     |              |                                |                      |                         |               |                               |              |                     |              |
| Humidity                                      | < 95% without condensation  |                     |              |                                |                      |                         |               |                               |              |                     |              |
| Maximum altitude                              | 3000 m  |                     |              |                                |                      |                         |               |                               |              |                     |              |
| IP protection                                 | IP20  |                     |              |                                |                      |                         |               |                               |              |                     |              |
| Certifications                                | CE (Standards: Low Voltage Directive IEC EN 62040-1; EMC Directive IEC EN 62040-2; classification IEC EN 62040-3) |                     |              |                                |                      |                         |               |                               |              |                     |              |

© 2025 Tecnoware Power Systems. The technical data may change without prior notice.

### Accessories

| Model                   | Code         |
|-------------------------|--------------|
| Parallel cables kit     | FGCKITPARCA1 |
| Internal SNMP interface | FGCNETAG7    |
| ModBus RS485 interface  | FGCMODBUS    |

| Model                       | Code         |
|-----------------------------|--------------|
| Dry Contact DB9 interface   | FGCEVODSDRY3 |
| Dry Contact 9 PIN interface | FGCEVODSDRY4 |







Main Specifications

- Front door for access to battery compartments
- Isolator fuse protecting the battery circuit
- Removable side panels
- Easy maintenance

Specifications

| Model                          | BATTERY BOX FOR EVO DSP PLUS TM 10.0 PF 1      |              |              |                       |              |              |              |                       |              |               |                       |              |               |  |
|--------------------------------|--|--------------|--------------|-----------------------|--------------|--------------|--------------|-----------------------|--------------|---------------|-----------------------|--------------|---------------|--|
| Code                           | FBBP240A2/00                                   | FBBP240A2/18 | FBBP240A2/24 | FBBP240B2/00          | FBBP240B2/40 | FBBP240B2/60 | FBBP240B2/80 | FBBP240D2/00          | FBBP240D2/65 | FBBP240D2/100 | FBBP240D2/120         | FBBP240C2/00 | FBBP240C2/150 |  |
| Dimension (Box) LxHxP          | 60 x 110 x 60 cm                               |              |              | 61 x 140 x 68 cm      |              |              |              | 61 x 140 x 88 cm      |              |               | 81 x 190 x 98 cm      |              |               |  |
| Dimension (with packing) WxHxD | 74 x 162,5 x 104,5 cm                          |              |              | 94 x 212,5 x 114,5 cm |              |              |              | 94 x 212,5 x 114,5 cm |              |               | 94 x 212,5 x 114,5 cm |              |               |  |
| Weight                         | 80 Kg  | 190 kg       | 240 kg       | 175kg                 | 420 kg       | 505 kg       | 625 Kg       | 175 kg                | 560 kg       | 755kg         | 785 Kg                | 285 Kg       | 1.155 Kg      |  |
| Equipped with                  | Battery cable to connect UPS to Battery Box    |              |              |                       |              |              |              |                       |              |               |                       |              |               |  |
| Battery                        |  |              |              |                       |              |              |              |                       |              |               |                       |              |               |  |
| Type                           | Lead acid, sealed, maintenance free            |              |              |                       |              |              |              |                       |              |               |                       |              |               |  |
| Protection                     |  |              |              |                       |              |              |              |                       |              |               |                       |              |               |  |
| Battery circuit                | Disconnecter                                   |              |              |                       |              |              |              |                       |              |               |                       |              |               |  |
| Environmental specification    |  |              |              |                       |              |              |              |                       |              |               |                       |              |               |  |
| Working temperature            | From 0 to 55 °C (recommended from 20 to 25 °C) |              |              |                       |              |              |              |                       |              |               |                       |              |               |  |
| Humidity                       | < 95% without condensation                     |              |              |                       |              |              |              |                       |              |               |                       |              |               |  |
| Maximum altitude               | 3000 m   |              |              |                       |              |              |              |                       |              |               |                       |              |               |  |
| IP protection                  | IP20   |              |              |                       |              |              |              |                       |              |               |                       |              |               |  |
| Certifications                 | CE   |              |              |                       |              |              |              |                       |              |               |                       |              |               |  |

© 2025 Tecnoware Power Systems. The technical data may change without prior notice.



Main Specifications

- Front door for access to battery compartments
- Isolator fuse protecting the battery circuit
- Removable side panels
- Easy maintenance

Specifications

| Model                          | BATTERY BOX PER EVO DSP PLUS TM 20 PF 1        |              |              |                       |              |              |              |                       |               |               |                       |               |               |
|--------------------------------|--|--------------|--------------|-----------------------|--------------|--------------|--------------|-----------------------|---------------|---------------|-----------------------|---------------|---------------|
| Code                           | FBBEP384B/00                                   | FBBEP384B/24 | FBBEP384B/40 | FBBEP384C/00          | FBBEP384C/60 | FBBEP384C/65 | FBBEP384C/80 | FBBEP384D/00          | FBBEP384D/100 | FBBEP384D/120 | FBBEP384E/00          | FBBEP384E/140 | FBBEP384E/200 |
| Dimension (Box) LxHxP          | 61 x 140 x 88 cm                               |              |              | 81 x 140 x 88 cm      |              |              |              | 81 x 190 x 98 cm      |               |               | 121 x 190 x 98 cm     |               |               |
| Dimension (with packing) WxHxD | 74 x 162,5 x 84,5 cm 380 Kg                    |              |              | 94 x 162,5 x 104,5 cm |              |              |              | 94 x 212,5 x 114,5 cm |               |               | 134x 212,5 x 114,5 cm |               |               |
| Weight                         | 150 Kg   | 380 kg       | 770 kg       | 205 kg                | 700 kg       | 820 kg       | 950 Kg       | 285 kg                | 1.250 kg      | 1.260 kg      | 350 Kg                | 1.670 kg      | 2.240 kg      |
| Equipped with                  | Battery cable to connect UPS to Battery Box    |              |              |                       |              |              |              |                       |               |               |                       |               |               |
| Battery                        |  |              |              |                       |              |              |              |                       |               |               |                       |               |               |
| Type                           | Lead acid, sealed, maintenance free            |              |              |                       |              |              |              |                       |               |               |                       |               |               |
| Protection                     |  |              |              |                       |              |              |              |                       |               |               |                       |               |               |
| Battery circuit                | Disconnecter                                   |              |              |                       |              |              |              |                       |               |               |                       |               |               |
| Environmental specification    |  |              |              |                       |              |              |              |                       |               |               |                       |               |               |
| Working temperature            | From 0 to 55 °C (recommended from 20 to 25 °C) |              |              |                       |              |              |              |                       |               |               |                       |               |               |
| Humidity                       | < 95% without condensation                     |              |              |                       |              |              |              |                       |               |               |                       |               |               |
| Maximum altitude               | 3000 m   |              |              |                       |              |              |              |                       |               |               |                       |               |               |
| IP protection                  | IP20   |              |              |                       |              |              |              |                       |               |               |                       |               |               |
| Certifications                 | CE   |              |              |                       |              |              |              |                       |               |               |                       |               |               |

© 2025 Tecnoware Power Systems. The technical data may change without prior notice.



# UPS EVO DSP PLUS TT PF 1

## 10-20-30

Together on

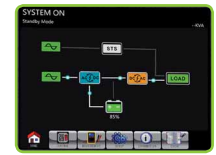


Ups Evo DSP Plus 10-20 TT PF 1

Ups Evo DSP Plus 30 TT PF 1

- 1 RS232 port 2 USB port 3 EPO connector 4 Interface for parallel connection 5 Slot for SNMP interface, Dry Contact or MODBUS 6 Input bypass switch  
7 Manual bypass switch for maintenance 8 Output voltage switch 9 Input voltage switch 10 Connector for external Battery Box 11 Input/output terminal box

POWER FACTOR 1



DISPLAY LCD  
color touch

### Main Specifications

- For Local Area Network (LAN), Data Centers, Industrial equipment, Electromedical equipment
- Power factor 1
- Double input mains/bypass
- Rectifier realized by IGBT technology

- Compatible with Generators
- Battery recharge system managed by microprocessor
- Static and manual bypass
- Expandable up to 2 units in parallel with shared Box Battery
- UPS Management Software TecnoManager compatible with Windows, Mac OS X, Unix, Linux, etc.

HIGH EFFICIENCY  
96%

### Specifications

| UPS Model                                     | EVO DSP PLUS TT 10.0-20.0-30.0 PF 1   |  |                               |                               |                               |                     |              |              |                               |                           |                      |                      |
|---|---|--|-------------------------------|-------------------------------|-------------------------------|---------------------|--------------|--------------|-------------------------------|---------------------------|----------------------|----------------------|
|   | FGCEDP10TT/00   | FGCEDP10TT/C<br>FGCEDP10TT/2C                  | FGCEDP10TT/D<br>FGCEDP10TT/2D | FGCEDP10TT/E<br>FGCEDP10TT/2E | FGCEDP20TT/00                 | FGCEDP20TT/C        | FGCEDP20TT/D | FGCEDP20TT/E | NEW<br>FGCEDP30TT/00          | NEW<br>FGCEDP30TT/2C      | NEW<br>FGCEDP30TT/2D | NEW<br>FGCEDP30TT/2E |
| Nominal power                                 | 10 KVA  |  |                               |                               | 20 KVA                        |                     |              |              | 30 KVA                        |                           |                      |                      |
| Active power                                  | 10 KW   |  |                               |                               | 20 KW                         |                     |              |              | 30 KW                         |                           |                      |                      |
| Power Factor                                  | 1   |  |                               |                               |                               |                     |              |              |                               |                           |                      |                      |
| Technology                                    | On-Line Double Conversion transformerless (VFI-SS-111)  |  |                               |                               |                               |                     |              |              |                               |                           |                      |                      |
| Cooling                                       | Fan cooling   |  |                               |                               |                               |                     |              |              |                               |                           |                      |                      |
| Dimension (UPS) WxHxD                         | 25x82,6x63 cm   |  |                               |                               |                               |                     |              |              | 30x100x81,5 cm                |                           |                      |                      |
| Dimension (with packing) WxHxD                | 38,5x102,5x73,5 cm  |  |                               |                               |                               |                     |              |              | 38,5x120,5x92 cm              |                           |                      |                      |
| Weight  | 70Kg  | 116 Kg<br>160 Kg                               | 124 Kg<br>176 Kg              | 128 Kg<br>184 Kg              | 80Kg                          | 150 Kg              | 166Kg        | 173 Kg       | 95 Kg                         | 235 Kg                    | 268 Kg               | 280 Kg               |
| Input   |   |  |                               |                               |                               |                     |              |              |                               |                           |                      |                      |
| Number of phases                              | 3Ph+N   |  |                               |                               |                               |                     |              |              |                               |                           |                      |                      |
| Nominal voltage                               | 360Vac/380Vac/400Vac/415Vac   |  |                               |                               |                               |                     |              |              |                               |                           |                      |                      |
| Nominal voltage (Ph-N)                        | 208Vac/220Vac/230Vac/240Vac   |  |                               |                               |                               |                     |              |              |                               |                           |                      |                      |
| Input voltage range (Ph-N)                    | 176Vac-276Vac to 100% load, 110Vac-300Vac to 50% load   |  |                               |                               |                               |                     |              |              |                               |                           |                      |                      |
| Nominal frequency                             | 50/60 Hz  |  |                               |                               |                               |                     |              |              |                               |                           |                      |                      |
| Input frequency range On-Line mode            | 46-54 Hz or 56-64 Hz  |  |                               |                               |                               |                     |              |              |                               |                           |                      |                      |
| Input current harmonic distortion (THDi)      | ≤4%   |  |                               |                               |                               |                     |              |              |                               |                           |                      |                      |
| Input power factor                            | 0,99  |  |                               |                               |                               |                     |              |              |                               |                           |                      |                      |
| Output  |   |  |                               |                               |                               |                     |              |              |                               |                           |                      |                      |
| Number of phases                              | 3Ph+N   |  |                               |                               |                               |                     |              |              |                               |                           |                      |                      |
| Nominal voltage                               | 360Vac/380Vac/400Vac/415Vac (Ph-N: 208Vac/220Vac/230Vac/240Vac)   |  |                               |                               |                               |                     |              |              |                               |                           |                      |                      |
| Voltage Regulation (On-Line and Battery mode) | ±1%   |  |                               |                               |                               |                     |              |              |                               |                           |                      |                      |
| Voltage THD at rated linear load              | <2% (linear load) - <5% (distorting load)   |  |                               |                               |                               |                     |              |              |                               |                           |                      |                      |
| Crest factor                                  | 3:1   |  |                               |                               |                               |                     |              |              |                               |                           |                      |                      |
| Frequency                                     | 50/60 Hz  |  |                               |                               |                               |                     |              |              |                               |                           |                      |                      |
| Frequency stability                           | ±0,1 Hz   |  |                               |                               |                               |                     |              |              |                               |                           |                      |                      |
| Inverter waveform                             | Sinewave  |  |                               |                               |                               |                     |              |              |                               |                           |                      |                      |
| Overload capability (On-line mode)            | 100-110% for 60 minutes, 100-125% for 10 minutes, 125-150% for 1 minute, >150 immediate                           |  |                               |                               |                               |                     |              |              |                               |                           |                      |                      |
| Overload capability (Battery mode)            | 100-110% for 60 minutes, 100-125% for 10 minutes, 125-150% for 1 minute, >150 immediate                           |  |                               |                               |                               |                     |              |              |                               |                           |                      |                      |
| Efficiency                                    | 96%, calculated in double conversion mode at 100% load to 100% load according to standard 62040-3                 |  |                               |                               |                               |                     |              |              |                               |                           |                      |                      |
| Transfer time                                 | 0 ms (On-Line)  |  |                               |                               |                               |                     |              |              |                               |                           |                      |                      |
| Battery                                       |   |  |                               |                               |                               |                     |              |              |                               |                           |                      |                      |
| Type  | Lead acid, sealed, maintenance free   |  |                               |                               |                               |                     |              |              |                               |                           |                      |                      |
| Installed inside                              | -   | 20 elements (10+10)<br>40 elements 2 x (10+10) |                               |                               | -                             | 32 elements (16+16) |              |              | -                             | 64 elements (2 set 16+16) |                      |                      |
| Extended autonomy                             | External Battery<br>Box (opt)   | -  |                               |                               | External Battery<br>Box (opt) | -                   |              |              | External Battery<br>Box (opt) | -                         |                      |                      |
| Environmental specification                   |   |  |                               |                               |                               |                     |              |              |                               |                           |                      |                      |
| Working temperature                           | From 0 to 55 °C (recommended from 20 to 25 °C, for longer battery life)   |  |                               |                               |                               |                     |              |              |                               |                           |                      |                      |
| Humidity                                      | < 95% without condensation  |  |                               |                               |                               |                     |              |              |                               |                           |                      |                      |
| Maximum altitude                              | 3000 m  |  |                               |                               |                               |                     |              |              |                               |                           |                      |                      |
| IP protection                                 | IP20  |  |                               |                               |                               |                     |              |              |                               |                           |                      |                      |
| Certifications                                | CE (Standards: Low Voltage Directive IEC EN 62040-1; EMC Directive IEC EN 62040-2; classification IEC EN 62040-3) |  |                               |                               |                               |                     |              |              |                               |                           |                      |                      |

### Accessories

| Model                     | Code         | Model   | Code         | Model   | Code        |
|---------------------------|--------------|---|--------------|---|-------------|
| Parallel cables kit       | FGCKTPARCA1  | Dry Contact 9 PIN interface                     | FGCEVODSDRY4 | Three-phase isolating transf. 20 KVA delta/star | FGCIT20KTST |
| Internal SNMP interface   | FGONETAG7    | Three-phase isolating transf. 10 KVA star/star  | FGCIT10KSST  | Three-phase isolating transf. 30 KVA delta/star | FGCIT30KSST |
| ModBus RS485 interface    | FGCMODBUS    | Three-phase isolating transf. 10 KVA delta/star | FGCIT10KTST  | Three-phase isolating transf. 30 KVA delta/star | FGCIT30KTST |
| Dry Contact DB9 interface | FGCEVODSDRY3 | Three-phase isolating transf. 20 KVA star/star  | FGCIT20KSST  |   |             |

© 2025 Tecnoware Power Systems. The technical data may change without prior notice.



**Main Specifications**

- Front door for access to battery compartments
- Isolator fuse protecting the battery circuit
- Removable side panels
- Easy maintenance

**Specifications**

| Model                          | BATTERY BOX FOR EVO DSP PLUS TT 10.0 PF 1      |               |               |                       |               |               |               |                       |               |                |                |                       |                |
|--------------------------------|--|---------------|---------------|-----------------------|---------------|---------------|---------------|-----------------------|---------------|----------------|----------------|-----------------------|----------------|
| Code                           | FB8EP240A2/00                                  | FB8EP240A2/18 | FB8EP240A2/24 | FB8EP240B2/00         | FB8EP240B2/40 | FB8EP240B2/60 | FB8EP240B2/80 | FB8EP240D2/00         | FB8EP240D2/65 | FB8EP240D2/100 | FB8EP240D2/120 | FB8EP240C2/00         | FB8EP240C2/150 |
| Dimension (Box) LxHxP          | 60 x 110 x 60 cm                               |               |               | 61 x 140 x 68 cm      |               |               |               | 61 x 140 x 88 cm      |               |                |                | 81 x 190 x 98 cm      |                |
| Dimension (with packing) WxHxD | 74 x 162,5 x 104,5 cm                          |               |               | 94 x 212,5 x 114,5 cm |               |               |               | 94 x 212,5 x 114,5 cm |               |                |                | 94 x 212,5 x 114,5 cm |                |
| Weight                         | 80 Kg  | 190 kg        | 240 kg        | 175kg                 | 420 kg        | 505 kg        | 625 Kg        | 175 kg                | 560 kg        | 755kg          | 785 Kg         | 285 Kg                | 1.155 Kg       |
| Equipped with                  | Battery cable to connect UPS to Battery Box    |               |               |                       |               |               |               |                       |               |                |                |                       |                |
| Battery                        |  |               |               |                       |               |               |               |                       |               |                |                |                       |                |
| Type                           | Lead acid, sealed, maintenance free            |               |               |                       |               |               |               |                       |               |                |                |                       |                |
| Protection                     |  |               |               |                       |               |               |               |                       |               |                |                |                       |                |
| Battery circuit                | Disconnecter                                   |               |               |                       |               |               |               |                       |               |                |                |                       |                |
| Environmental specification    |  |               |               |                       |               |               |               |                       |               |                |                |                       |                |
| Working temperature            | From 0 to 55 °C (recommended from 20 to 25 °C) |               |               |                       |               |               |               |                       |               |                |                |                       |                |
| Humidity                       | < 95% without condensation                     |               |               |                       |               |               |               |                       |               |                |                |                       |                |
| Maximum altitude               | 3000 m   |               |               |                       |               |               |               |                       |               |                |                |                       |                |
| IP protection                  | IP20   |               |               |                       |               |               |               |                       |               |                |                |                       |                |
| Certifications                 | CE   |               |               |                       |               |               |               |                       |               |                |                |                       |                |

© 2025 Tecnoware Power Systems. The technical data may change without prior notice.

**Main Specifications**

- Front door for access to battery compartments
- Isolator fuse protecting the battery circuit
- Removable side panels
- Easy maintenance

**Specifications**

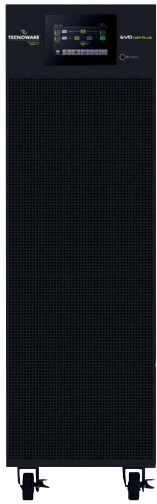
| Model                          | BATTERY BOX FOR EVO DSP PLUS TT 20-30 PF 1     |             |             |                       |             |             |             |                       |              |              |                       |              |              |
|--------------------------------|--|-------------|-------------|-----------------------|-------------|-------------|-------------|-----------------------|--------------|--------------|-----------------------|--------------|--------------|
| Code                           | FBEP384B/00                                    | FBEP384B/24 | FBEP384B/40 | FBEP384C/00           | FBEP384C/60 | FBEP384C/65 | FBEP384C/80 | FBEP384D/00           | FBEP384D/100 | FBEP384D/120 | FBEP384E/00           | FBEP384E/140 | FBEP384E/200 |
| Dimension (Box) LxHxP          | 61 x 140 x 88 cm                               |             |             | 81 x 140 x 88 cm      |             |             |             | 81 x 190 x 98 cm      |              |              | 121 x 190 x 98 cm     |              |              |
| Dimension (with packing) WxHxD | 74 x 162,5 x 84,5 cm 380 Kg                    |             |             | 94 x 162,5 x 104,5 cm |             |             |             | 94 x 212,5 x 114,5 cm |              |              | 134x 212,5 x 114,5 cm |              |              |
| Weight                         | 150 Kg   | 380 kg      | 770 kg      | 205 kg                | 700 kg      | 820 kg      | 950 Kg      | 285 kg                | 1.250 kg     | 1.260 kg     | 350 Kg                | 1.670 kg     | 2.240 kg     |
| Equipped with                  | Battery cable to connect UPS to Battery Box    |             |             |                       |             |             |             |                       |              |              |                       |              |              |
| Battery                        |  |             |             |                       |             |             |             |                       |              |              |                       |              |              |
| Type                           | Lead acid, sealed, maintenance free            |             |             |                       |             |             |             |                       |              |              |                       |              |              |
| Protection                     |  |             |             |                       |             |             |             |                       |              |              |                       |              |              |
| Battery circuit                | Disconnecter                                   |             |             |                       |             |             |             |                       |              |              |                       |              |              |
| Environmental specification    |  |             |             |                       |             |             |             |                       |              |              |                       |              |              |
| Working temperature            | From 0 to 55 °C (recommended from 20 to 25 °C) |             |             |                       |             |             |             |                       |              |              |                       |              |              |
| Humidity                       | < 95% without condensation                     |             |             |                       |             |             |             |                       |              |              |                       |              |              |
| Maximum altitude               | 3000 m   |             |             |                       |             |             |             |                       |              |              |                       |              |              |
| IP protection                  | IP20   |             |             |                       |             |             |             |                       |              |              |                       |              |              |
| Certifications                 | CE   |             |             |                       |             |             |             |                       |              |              |                       |              |              |

© 2025 Tecnoware Power Systems. The technical data may change without prior notice.

# UPS EVO DSP PLUS TT PF 1

## 40-60

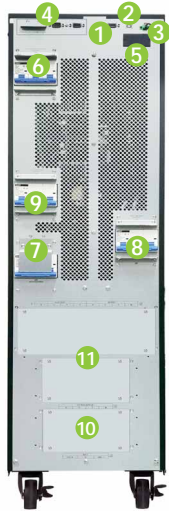
*Together on*



Ups Evo DSP Plus  
40-60 TT PF 1

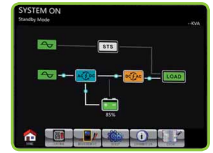


Ups Evo DSP Plus 40 TT PF 1



Ups Evo DSP Plus 60 TT PF 1

**POWER  
FACTOR 1**



DISPLAY LCD  
color touch

- 1 RS232 port 2 USB port 3 EPO connector 4 Interface for parallel connection 5 Slot for SNMP interface, Dry Contact or MODBUS 6 Input bypass switch  
7 Manual bypass switch for maintenance 8 Output voltage switch 9 Input switch 10 Connector for external Battery Box 11 Input/output terminal box

### Main Specifications

- Local Area Networks (LAN), Data Centers, Industrial equipment, Electromedical equipment
- Power factor 1
- Double input mains/Bypass
- Rectifier realized by IGBT technology
- Compatible with Generators
- Battery charging system controlled by microprocessor
- Static and manual bypass
- Expandable up to 2 units in parallel with shared Box Battery
- UPS Management Software TecnoManager compatible with Windows, Mac OS X, Unix, Linux, etc.

**HIGH  
EFFICIENCY**  
**96%**

### Specifications

| UPS Model                                     | EVO DSP PLUS TT 40.0 PF 1   |                               |                               |                               | EVO DSP PLUS TT 60.0 PF 1  |
|---|---|-------------------------------|-------------------------------|-------------------------------|----------------------------|
|   | <div>NEW</div> FGCEDP40TT2/00   | <div>NEW</div> FGCEDP40TT2/2C | <div>NEW</div> FGCEDP40TT2/2D | <div>NEW</div> FGCEDP40TT2/2E | FGCEDP60TT/00              |
| Code  |   |                               |                               |                               |                            |
| Nominal power                                 | 40 KVA  |                               |                               |                               | 60 KVA                     |
| Active power                                  | 40 KW   |                               |                               |                               | 60 KW                      |
| Power factor                                  | 1   |                               |                               |                               |                            |
| Technology                                    | On-Line Double Conversion transformerless (VFI-SS-111)  |                               |                               |                               |                            |
| Cooling                                       | Fan cooling   |                               |                               |                               |                            |
| Dimension (UPS) WxHxD                         | 30x100x81,5cm   |                               |                               |                               |                            |
| Dimension (with packing) WxHxD                | 43x123,5x95,3cm   |                               |                               |                               |                            |
| Weight  | 95 Kg   | 236 Kg                        | 268 Kg                        | 280 Kg                        | 100 Kg                     |
| Input   |   |                               |                               |                               |                            |
| Number of phases                              | 3Ph+N   |                               |                               |                               |                            |
| Nominal voltage                               | 360Vac/380Vac/400Vac/415Vac   |                               |                               |                               |                            |
| Nominal voltage (Ph-N)                        | 208Vac/220Vac/230Vac/240Vac   |                               |                               |                               |                            |
| Input voltage range (Ph-N)                    | 176Vac-276Vac to 100% load, 110Vac-300Vac to 50% load   |                               |                               |                               |                            |
| Nominal frequency                             | 50/60 Hz  |                               |                               |                               |                            |
| Input frequency range On-Line mode            | ±7%   |                               |                               |                               |                            |
| Input current harmonic distortion THDi        | <9% to 50% load, <6% to 100% load   |                               |                               |                               |                            |
| Input power factor                            | 0,99  |                               |                               |                               |                            |
| Output  |   |                               |                               |                               |                            |
| Number of phases                              | 3Ph+N   |                               |                               |                               |                            |
| Nominal voltage                               | 360Vac/380Vac/400Vac/415Vac (Ph-N: 208Vac/220Vac/230Vac/240Vac)   |                               |                               |                               |                            |
| Voltage Regulation (On-Line and Battery mode) | ±1%   |                               |                               |                               |                            |
| Voltage THD at rated linear load              | <2% (linear load) - <5% (distorting load)   |                               |                               |                               |                            |
| Crest factor                                  | 3:1   |                               |                               |                               |                            |
| Frequency                                     | 50/60 Hz  |                               |                               |                               |                            |
| Frequency stability                           | ±0,1 Hz   |                               |                               |                               |                            |
| Inverter waveform                             | Sinewave  |                               |                               |                               |                            |
| Overload capability (On-line mode)            | 100-110% for 60 minuti, 100-125% for 10 minutes,125-150% for 1 minute, >150 immediate                             |                               |                               |                               |                            |
| Overload capability (Battery mode)            | 100-110% for 60 minuti, 100-125% for 10 minutes,125-150% for 1 minute, >150 immediate                             |                               |                               |                               |                            |
| Efficiency                                    | 96%, calculated in double conversion mode at 100% load according to standard 62040-3                              |                               |                               |                               |                            |
| Transfer time                                 | 0 ms (On-Line)  |                               |                               |                               |                            |
| Battery                                       |   |                               |                               |                               |                            |
| Type  | Lead acid, sealed, maintenance free   |                               |                               |                               |                            |
| Installed inside                              | -   | 64 elements (2 set 16+16)     |                               |                               | -                          |
| Extended autonomy                             | External Battery Box (opt)  | -                             |                               |                               | External Battery Box (opt) |
| Environmental specification                   |   |                               |                               |                               |                            |
| Working temperature                           | From 0 to 55 °C (recommended from 20 to 25 °C)  |                               |                               |                               |                            |
| Humidity                                      | < 95% without condensation  |                               |                               |                               |                            |
| Maximum altitude                              | 3000 m  |                               |                               |                               |                            |
| IP protection                                 | IP20  |                               |                               |                               |                            |
| Certifications                                | CE (Standards: Low Voltage Directive IEC EN 62040-1; EMC Directive IEC EN 62040-2; classification IEC EN 62040-3) |                               |                               |                               |                            |

© 2025 Tecnoware Power Systems. The technical data may change without prior notice.

### Accessories

| Model                       | Code         |
|-----------------------------|--------------|
| Parallel Kit                | FGCKITPARCA1 |
| Internal SNMP               | FGCNETAG7    |
| Dry Contact DB9 Interface   | FGCEVODSDRY3 |
| Dry Contact 9 PIN Interface | FGCEVODSDRY4 |
| ModBus RS485 Interface      | FGCMODBUS    |

| Model  | Code        |
|--|-------------|
| Three-phase isolation Trans. 40 KVA star/star  | FGCIT40KSST |
| Three-phase isolation Trans. 40 KVA delta/star | FGCIT40KTST |
| Three-phase isolation Trans. 60 KVA star/star  | FGCIT60KSST |
| Three-phase isolation Trans. 60 KVA delta/star | FGCIT60KTST |



### Main Specifications

- Front door for access to battery compartments
- Isolator fuse protecting the battery circuit
- Removable side panels
- Easy maintenance

### Specifications

| Model                              | BATTERY BOX FOR EVO DSP PLUS TT 40.0-60.0 PF 1 |              |                       |              |              |              |
|------------------------------------|--|--------------|-----------------------|--------------|--------------|--------------|
| Code                               | FBEBP384B/00                                   | FBEBP384B/40 | FBEBP384C/00          | FBEBP384C/60 | FBEBP384C/65 | FBEBP384C/80 |
| Dimension (Box) WxHxD              | 61 x 140 x 68 cm                               |              | 81 x 140 x 88 cm      |              |              |              |
| Dimension (with packing) WxHxD     | 74 x 162,5 x 84,5 cm                           |              | 94 x 162,5 x 104,5 cm |              |              |              |
| Weight                             | 150 Kg   | 770 kg       | 205 kg                | 800 kg       | 820 kg       | 950 kg       |
| Equipped with                      | Battery cable to connect UPS to Battery Box    |              |                       |              |              |              |
| <b>Battery</b>                     |  |              |                       |              |              |              |
| Type                               | Lead acid, sealed, maintenance free            |              |                       |              |              |              |
| <b>Protection</b>                  |  |              |                       |              |              |              |
| Battery circuit                    | Disconnecter                                   |              |                       |              |              |              |
| <b>Environmental specification</b> |  |              |                       |              |              |              |
| Working temperature                | From 0 to 55 °C (recommended from 20 to 25 °C) |              |                       |              |              |              |
| Humidity                           | < 95% without condensation                     |              |                       |              |              |              |
| Maximum altitude                   | 3000 m   |              |                       |              |              |              |
| IP protection                      | IP20   |              |                       |              |              |              |
| Certifications                     | CE   |              |                       |              |              |              |

© 2025 Tecnoware Power Systems. The technical data may change without prior notice.

### Specifications

| Model                              | BATTERY BOX FOR EVO DSP PLUS TT 40.0-60.0 PF 1 |               |                       |              |               |               |
|------------------------------------|--|---------------|-----------------------|--------------|---------------|---------------|
| Code                               | FBEBP384D/00                                   | FBEBP384D/100 | FBEBP384D/120         | FBEBP384E/00 | FBEBP384E/140 | FBEBP384E/200 |
| Dimension (Box) WxHxD              | 81 x 190 x 98 cm                               |               | 121 x 190 x 98 cm     |              |               |               |
| Dimension (with packing) WxHxD     | 94 x 212,5 x 114,5 cm                          |               | 134x 212,5 x 114,5 cm |              |               |               |
| Weight                             | 285 Kg   | 1.250 kg      | 1.260 kg              | 359 kg       | 1.670 kg      | 2.240 kg      |
| Equipped with                      | Battery cable to connect UPS to Battery Box    |               |                       |              |               |               |
| <b>Battery</b>                     |  |               |                       |              |               |               |
| Type                               | Lead acid, sealed, maintenance free            |               |                       |              |               |               |
| <b>Protection</b>                  |  |               |                       |              |               |               |
| Battery circuit                    | Disconnecter                                   |               |                       |              |               |               |
| <b>Environmental specification</b> |  |               |                       |              |               |               |
| Working temperature                | From 0 to 55 °C (recommended from 20 to 25 °C) |               |                       |              |               |               |
| Humidity                           | < 95% without condensation                     |               |                       |              |               |               |
| Maximum altitude                   | 3000 m   |               |                       |              |               |               |
| IP protection                      | IP20   |               |                       |              |               |               |
| Certifications                     | CE   |               |                       |              |               |               |

© 2025 Tecnoware Power Systems. The technical data may change without prior notice.

# UPS EVO DSP PLUS TT PF 1

## 80-100-120-180-200-240-300



Ups Evo DSP Plus TT  
80.0-100.0-120.0 PF 1



Ups Evo DSP Plus TT  
180.0-200.0 PF 1



Ups Evo DSP Plus TT  
240.0-300.0 PF 1

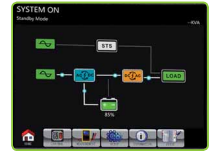
**EASY SWAP  
INTERNAL MODULE WITH  
REDUNDANT FUNCTION  
(not hot swappable)**

(UPS reduces the power  
if one module fails)

**POWER  
FACTOR 1**

**POWER WALK-IN  
FUNCTION**

HIGH  
GENERATOR  
COMPATIBILITY



DISPLAY LCD colour touch

### Main Specifications

- For Local Area Network (LAN), Data Centers, Industrial equipment, Electromedical equipment
- Touch color LCD display
- Power factor 1
- Rectifier by IGBT
- Easy Swap internal modules with redundant function (not hot swappable - UPS reduces the power if one module fails)
- Battery Recharge System managed by Microprocessor
- High compatibility with the generator: due to the Power Walk-in function, the rectifier starts up progressively, reducing the input current so no need oversize the generator.
- Modular internal structure for easy and quick maintenance
- Static and Manual Bypass
- Expandable up to 2 units in parallel
- UPS Management Software TecnoManager compatible with Windows, Mac OS X, Unix, Linux, etc.

**HIGH  
EFFICIENCY  
96%**

### Specifications

Specifications

NEW

NEW

NEW

| UPS Model  | EVO DSP PLUS TT<br>80.0 PF 1  | EVO DSP PLUS TT<br>100.0 PF 1 | EVO DSP PLUS TT<br>120.0 PF 1 | EVO DSP PLUS TT<br>180.0 PF 1 | EVO DSP PLUS TT<br>200.0 PF 1 | EVO DSP PLUS TT<br>240.0 PF 1 | EVO DSP PLUS TT<br>300.0 PF 1 |
|--|---|-------------------------------|-------------------------------|-------------------------------|-------------------------------|-------------------------------|-------------------------------|
| Code   | FGCEDP80TT/00   | FGCEDP100TT/00                | FGCEDP120TT/00                | FGCEDP180TT/00                | FGCEDP200TT/00                | FGCEDP240TT/00                | FGCEDP300TT/00                |
| Nominal Power                                    | 80 KVA  | 100 KVA                       | 120 KVA                       | 180 KVA                       | 200 KVA                       | 240 KVA                       | 300 KVA                       |
| Active Power                                     | 80 KW   | 100 KW                        | 120 KW                        | 180 KW                        | 200 KW                        | 240 KW                        | 300 KW                        |
| Power Factor                                     | 1   |                               |                               |                               |                               |                               |                               |
| Technology                                       | On-Line Double Conversion transformerless (VFI-SS-111)  |                               |                               |                               |                               |                               |                               |
| Cooling  | Fan cooling   |                               |                               |                               |                               |                               |                               |
| Dimension (UPS) WxHxD                            | 43x120x100 cm   |                               |                               | 60x120x100cm                  |                               | 60x147,5x110cm                |                               |
| Weight   | 160 Kg  | 169 Kg                        | 185 Kg                        | 249 Kg                        | 265 Kg                        | 360Kg                         | 396Kg                         |
| Input  |   |                               |                               |                               |                               |                               |                               |
| Number of phases                                 | 3Ph+N   |                               |                               |                               |                               |                               |                               |
| Nominal voltage                                  | 380Vac/400Vac/415Vac  |                               |                               |                               |                               |                               |                               |
| Input voltage range (Ph-N)                       | 176Vac-276Vac to 100% load, 110Vac-300Vac to 50% load   |                               |                               |                               |                               |                               |                               |
| Nominal frequency                                | 50/60 Hz  |                               |                               |                               |                               |                               |                               |
| Input frequency range On-Line mode               | 40Hz ~70Hz  |                               |                               |                               |                               |                               |                               |
| Input current harmonic distortion (THDi)         | ≤4%   |                               |                               |                               |                               |                               |                               |
| Input power factor                               | 0,99  |                               |                               |                               |                               |                               |                               |
| Output   |   |                               |                               |                               |                               |                               |                               |
| Number of phases                                 | 3Ph+N   |                               |                               |                               |                               |                               |                               |
| Nominal voltage                                  | 380Vac/400Vac/415Vac  |                               |                               |                               |                               |                               |                               |
| Voltage Regulation (On-Line and Battery mode)    | ±1%   |                               |                               |                               |                               |                               |                               |
| Voltage THD at rated linear load                 | <2% (linear load) - <4% (non-linear load)   |                               |                               |                               |                               |                               |                               |
| Crest factor                                     | 3:1   |                               |                               |                               |                               |                               |                               |
| Frequency  | 50/60 Hz  |                               |                               |                               |                               |                               |                               |
| Frequency stability                              | ±0,1 Hz   |                               |                               |                               |                               |                               |                               |
| Inverter waveform                                | Sinewave  |                               |                               |                               |                               |                               |                               |
| Overload capability                              | 110% for hour, 111% ~ 125% for 10 minutes, 126%~150% for 1 minute, >150% for 200 ms                               |                               |                               |                               |                               |                               |                               |
| Efficiency                                       | 96%, calculated in double conversion mode at 100% load according to standard 62040-3                              |                               |                               |                               |                               |                               |                               |
| Transfer time                                    | 0 ms (On-Line)  |                               |                               |                               |                               |                               |                               |
| Battery (fitted inside the external Battery Box) |   |                               |                               |                               |                               |                               |                               |
| Type   | Lead acid, sealed, maintenance free   |                               |                               |                               |                               |                               |                               |
| External Battery Box                             | See page Battery Box  |                               |                               |                               |                               |                               |                               |
| Environmental specification                      |   |                               |                               |                               |                               |                               |                               |
| Working temperature                              | From 0 to 55 °C (recommended from 20 to 25 °C)  |                               |                               |                               |                               |                               |                               |
| Humidity   | < 95% without condensation  |                               |                               |                               |                               |                               |                               |
| Maximum altitude                                 | 3000 m  |                               |                               |                               |                               |                               |                               |
| IP protection                                    | IP20  |                               |                               |                               |                               |                               |                               |
| Certifications                                   | CE (Standards: Low Voltage Directive IEC EN 62040-1; EMC Directive IEC EN 62040-2; classification IEC EN 62040-3) |                               |                               |                               |                               |                               |                               |

© 2025 Tecnoware Power Systems. The technical data may change without prior notice.

### Accessories

| Model  | Code            | Model  | Code         |
|--|-----------------|--|--------------|
| Parallel Kit for Evo Dsp Plus TT 80-300 KVA          | FGCKITPAREVDP10 | Three-phase isolating transformer 120 KVA star/star  | FGCIT120KSST |
| Internal SNMP interface                              | FGCNETAG7       | Three-phase isolating transformer 120 KVA delta/star | FGCIT120KTST |
| MODBUS RS485 interface                               | FGCMODBUS       | Three-phase isolating transformer 180 KVA star/star  | FGCIT180KSST |
| Dry Contact DB9 interface                            | FGCEVODSDRY3    | Three-phase isolating transformer 180 KVA delta/star | FGCIT180KTST |
| Dry Contact 9 PIN interface                          | FGCEVODSDRY4    | Three-phase isolating transformer 200 KVA star/star  | FGCIT200KSST |
| Three-phase isolating transformer 80 KVA star/star   | FGCIT80KSST     | Three-phase isolating transformer 200 KVA delta/star | FGCIT200KTST |
| Three-phase isolating transformer 80 KVA delta/star  | FGCIT80KTST     | Three-phase isolating transformer 240 KVA star/star  | FGCIT240KSST |
| Three-phase isolating transformer 100 KVA star/star  | FGCIT100KSST    | Three-phase isolating transformer 240 KVA delta/star | FGCIT240KTST |
| Three-phase isolating transformer 100 KVA delta/star | FGCIT100KTST    | Three-phase isolating transformer 300 KVA star/star  | FGCIT300KSST |
|  |                 | Three-phase isolating transformer 300 KVA delta/star | FGCIT300KTST |





### Main Specifications

- Front door for access to battery compartments
- Removable side panels
- Isolator fuse protecting the battery circuit
- Easy maintenance

### Specifications

| Model                              | BATTERY BOX FOR EVO DSP PLUS TT 80.0-100.0-120.0-180.0-200.0-240.0-300.0 PF 1 |             |                       |             |             |             |
|------------------------------------|---|-------------|-----------------------|-------------|-------------|-------------|
| Code                               | FBEP384B/00   | FBEP384B/40 | FBEP384C/00           | FBEP384C/60 | FBEP384C/65 | FBEP384C/80 |
| Dimension (Box) WxHxD              | 61 x 140 x 68 cm  |             | 81 x 140 x 88 cm      |             |             |             |
| Dimension (with packing) WxHxD     | 74 x 162,5 x 84,5 cm  |             | 94 x 162,5 x 104,5 cm |             |             |             |
| Weight                             | 150 Kg  | 770 kg      | 205 kg                | 800 kg      | 820 kg      | 950 kg      |
| Equipped with                      | Battery cable to connect UPS to Battery Box                                   |             |                       |             |             |             |
| <b>Battery</b>                     |   |             |                       |             |             |             |
| Type                               | Lead acid, sealed, maintenance free   |             |                       |             |             |             |
| <b>Protection</b>                  |   |             |                       |             |             |             |
| Battery circuit                    | Disconnecter  |             |                       |             |             |             |
| <b>Environmental specification</b> |   |             |                       |             |             |             |
| Working temperature                | From 0 to 55 °C (recommended from 20 to 25 °C)                                |             |                       |             |             |             |
| Humidity                           | < 95% without condensation  |             |                       |             |             |             |
| Maximum altitude                   | 3000 m  |             |                       |             |             |             |
| IP protection                      | IP20  |             |                       |             |             |             |
| Certifications                     | CE  |             |                       |             |             |             |

© 2025 Tecnoware Power Systems. The technical data may change without prior notice.

### Specifications

| Model                              | BBATTERY BOX FOR EVO DSP PLUS TT 80.0-100.0-120.0-180.0-200.0-240.0-300.0 PF 1 |              |                       |             |              |              |
|------------------------------------|--|--------------|-----------------------|-------------|--------------|--------------|
| Code                               | FBEP384D/00  | FBEP384D/100 | FBEP384D/120          | FBEP384E/00 | FBEP384E/140 | FBEP384E/200 |
| Dimension (Box) WxHxD              | 81 x 190 x 98 cm   |              | 121 x 190 x 98 cm     |             |              |              |
| Dimension (with packing) WxHxD     | 94 x 212,5 x 114,5 cm  |              | 134x 212,5 x 114,5 cm |             |              |              |
| Weight                             | 285 Kg   | 1.250 kg     | 1.260 kg              | 359 kg      | 1.670 kg     | 2.240 kg     |
| Equipped with                      | Battery cable to connect UPS to Battery Box                                    |              |                       |             |              |              |
| <b>Battery</b>                     |  |              |                       |             |              |              |
| Type                               | Lead acid, sealed, maintenance free  |              |                       |             |              |              |
| <b>Protection</b>                  |  |              |                       |             |              |              |
| Battery circuit                    | Disconnecter   |              |                       |             |              |              |
| <b>Environmental specification</b> |  |              |                       |             |              |              |
| Working temperature                | From 0 to 55 °C (recommended from 20 to 25 °C)                                 |              |                       |             |              |              |
| Humidity                           | < 95% without condensation   |              |                       |             |              |              |
| Maximum altitude                   | 3000 m   |              |                       |             |              |              |
| IP protection                      | IP20   |              |                       |             |              |              |
| Certifications                     | CE   |              |                       |             |              |              |

© 2025 Tecnoware Power Systems. The technical data may change without prior notice.

# UPS EVO DSP PLUS TT 208 VAC PF 1

## 10-20

Together on

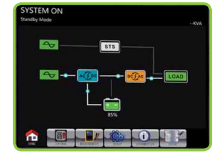


Ups Evo DSP Plus 10 TT 208V PF 1

Ups Evo DSP Plus 20 TT 208V PF 1

208 Vac

POWER FACTOR 1

DISPLAY LCD  
color touch

- 1 RS232 port 2 USB port 3 EPO connector 4 Interface for parallel connection 5 Slot for SNMP interface, Dry Contact or MODBUS 6 Input bypass switch  
7 Manual bypass switch for maintenance 8 Output voltage switch 9 Input switch 10 Connector for external Battery Box 11 Input/output terminal box

### Main Specifications

- Local Area Networks (LAN), Data Centers, Industrial equipment, Electromedical equipment
- Power factor 1
- Rectifier realized by IGBT technology
- Compatible with Generators
- Battery charging system controlled by microprocessor
- Static and manual bypass
- Expandable up to 3 units in parallel with shared Box Battery
- UPS Management Software TecnoManager compatible with Windows, Mac OS X, Unix, Linux, etc.

HIGH  
EFFICIENCY  
94%

### Specifications

| UPS Model                                     | EVO DSP PLUS 10 TT 208V PF 1  | EVO DSP PLUS 20 TT 208V PF 1 |
|---|---|------------------------------|
| Code  | FGCEDP10TT208/00  | FGCEDP20TT208/00             |
| Nominal power                                 | 10 KVA  | 20 KVA                       |
| Active power                                  | 10 KW   | 20 KW                        |
| Power factor                                  | 1   |                              |
| Technology                                    | On-Line Double Conversion transformerless (VFI-SS-111)  |                              |
| Cooling                                       | Fan cooling   |                              |
| Dimension (UPS) WxHxD                         | 25x82,6x62,6cm  | 30x100x81,5cm                |
| Dimension (with packing) WxHxD                | 38x106,1x76,4cm   | 43x123,5x95,3cm              |
| Weight  | 45 Kg   | 71Kg                         |
| Input   |   |                              |
| Number of phases                              | 3Ph+N   |                              |
| Nominal voltage                               | 208Vac/220Vac   |                              |
| Nominal voltage (Ph-N)                        | 120Vac/127Vac   |                              |
| Input voltage range (Ph-N)                    | 88Vac-146Vac to 100% load, 70Vac-156Vac to 50% load   |                              |
| Nominal frequency                             | 50/60 Hz  |                              |
| Input frequency range On-Line mode            | ±7%   |                              |
| Input current harmonic distortion THDi        | <9% to 50% load, <6% to 100% load   |                              |
| Input power factor                            | 0,99  |                              |
| Output  |   |                              |
| Number of phases                              | 3Ph+N   |                              |
| Nominal voltage                               | 208Vac/220Vac (Ph-N: 120Vac/127Vac)   |                              |
| Voltage Regulation (On-Line and Battery mode) | ±1%   |                              |
| Voltage THD at rated linear load              | <2% (linear load) - <4% (distorting load)   |                              |
| Crest factor                                  | 3:1   |                              |
| Frequency                                     | 50/60 Hz  |                              |
| Frequency stability                           | ±0,1 Hz   |                              |
| Inverter waveform                             | Sinewave  |                              |
| Overload capability (On-line mode)            | 100-110% for 60 minutes, 100-125% for 10 minutes,125-150% for 1 minute, >150 immediate                            |                              |
| Overload capability (Battery mode)            | 100-110% for 60 minutes, 100-125% for 10 minutes,125-150% for 1 minute, >150 immediate                            |                              |
| Efficiency                                    | 94%, calculated in double conversion mode at 100% load according to standard 62040-3                              |                              |
| Transfer time                                 | 0 ms (On-Line)  |                              |
| Battery                                       |   |                              |
| Type  | Lead acid, sealed, maintenance free   |                              |
| Ready for installed inside                    | Ready for 32 elements (2 set 8+8)   |                              |
| Extended autonomy                             | External Battery Box (optional) ±96Vdc  |                              |
| Environmental specification                   |   |                              |
| Working temperature                           | From 0 to 55 °C (recommended from 20 to 25 °C)  |                              |
| Humidity                                      | < 95% without condensation  |                              |
| Maximum altitude                              | 3000 m  |                              |
| IP protection                                 | IP20  |                              |
| Certifications                                | CE (Standards: Low Voltage Directive IEC EN 62040-1; EMC Directive IEC EN 62040-2; classification IEC EN 62040-3) |                              |

© 2025 Tecnoware Power Systems. The technical data may change without prior notice.

### Accessories

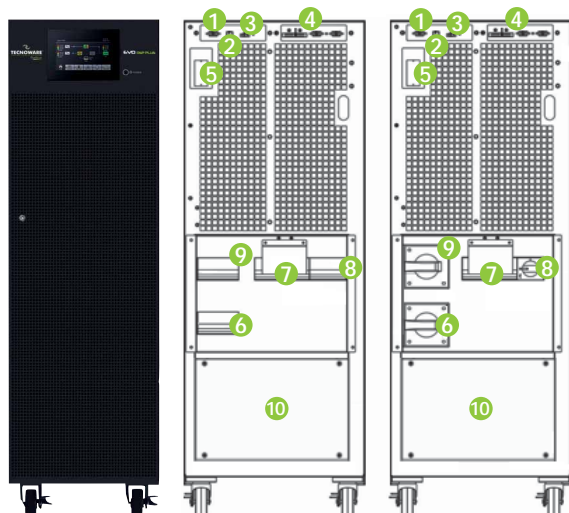
| Model                       | Code         |
|-----------------------------|--------------|
| Parallel Kit                | FGCKITPARCA1 |
| Internal SNMP               | FGCNETAG7    |
| Dry Contact DB9 Interface   | FGCEVODSDRY3 |
| Dry Contact 9 PIN Interface | FGCEVODSDRY4 |
| ModBus RS485 Interface      | FGCMODBUS    |



# UPS EVO DSP PLUS TT 208V PF 1

## 30-40

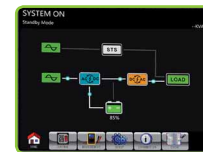
Together on

Ups Evo DSP Plus  
30 TT 208V PF 1Ups Evo DSP Plus  
40 TT 208V PF 1

208 Vac

POWER  
FACTOR

1

DISPLAY LCD  
color touch

- 1 RS232 port 2 USB port 3 EPO connector 4 Interface for parallel connection 5 Slot for SNMP interface, Dry Contact or MODBUS 6 Input bypass switch  
7 Manual bypass switch for maintenance 8 Output voltage switch 9 Input switch 10 Input/output/ external Battery Box terminal box

### Main Specifications

- Local Area Networks (LAN), Data Centers, Industrial equipment, Electromedical equipment
- Power factor 1
- Rectifier realized by IGBT technology
- Compatible with Generators
- Battery charging system controlled by microprocessor
- Static and manual bypass
- Expandable up to 3 units in parallel with shared Box Battery
- UPS Management Software TecnoManager compatible with Windows, Mac OS X, Unix, Linux, etc.

HIGH  
EFFICIENCY

94%

### Specifications

| Modelo  | EVO DSP PLUS 30 TT 208V PF 1  | EVO DSP PLUS 40 TT 208V PF 1 |
|---|---|------------------------------|
| Code  | FGCEDP30TT208/00  | FGCEDP40TT208/00             |
| Nominal power                                 | 30 KVA  | 40 KVA                       |
| Active power                                  | 30 KW   | 40 KW                        |
| Power factor                                  | 1   |                              |
| Technology                                    | On-Line Double Conversion transformerless (VFI-SS-111)  |                              |
| Cooling                                       | Fan cooling   |                              |
| Dimension (UPS) WxHxD                         | 25x82,6x62,6cm  |                              |
| Dimension (with packing) WxHxD                | 38x106,1x76,4cm   |                              |
| Weight  | 112 Kg  | 117 Kg                       |
| Input   |   |                              |
| Number of phases                              | 3Ph+N   |                              |
| Nominal voltage                               | 208Vac/220Vac   |                              |
| Nominal voltage (Ph-N)                        | 120Vac/127Vac   |                              |
| Input voltage range (Ph-N)                    | 88Vac-146Vac to 100% load, 70Vac-156Vac to 50% load   |                              |
| Nominal frequency                             | 50/60 Hz  |                              |
| Input frequency range On-Line mode            | ±7%   |                              |
| Input current harmonic distortion THDi        | <9% to 50% load, <6% to 100% load   |                              |
| Input power factor                            | 0,99  |                              |
| Output  |   |                              |
| Number of phases                              | 3Ph+N   |                              |
| Nominal voltage                               | 208Vac/220Vac (Ph-N: 120Vac/127Vac)   |                              |
| Voltage Regulation (On-Line and Battery mode) | ±1%   |                              |
| Voltage THD at rated linear load              | <2% (linear load) - <4% (distorting load)   |                              |
| Crest factor                                  | 3:1   |                              |
| Frequency                                     | 50/60 Hz  |                              |
| Frequency stability                           | ±0,1 Hz   |                              |
| Inverter waveform                             | Sinewave  |                              |
| Overload capability (On-line mode)            | 100-110% for 60 minutes, 100-125% for 10 minutes,125-150% for 1 minute, >150 immediate                            |                              |
| Overload capability (Battery mode)            | 100-110% for 60 minutes, 100-125% for 10 minutes,125-150% for 1 minute, >150 immediate                            |                              |
| Efficiency                                    | 94%, calculated in double conversion mode at 100% load according to standard 62040-3                              |                              |
| Transfer time                                 | 0 ms (On-Line)  |                              |
| Battery                                       |   |                              |
| Type  | Lead acid, sealed, maintenance free   |                              |
| Extended autonomy                             | External Battery Box (optional) ±120Vdc   |                              |
| Environmental specification                   |   |                              |
| Working temperature                           | From 0 to 55 °C (recommended from 20 to 25 °C)  |                              |
| Humidity                                      | < 95% without condensation  |                              |
| Maximum altitude                              | 3000 m  |                              |
| IP protection                                 | IP20  |                              |
| Certifications                                | CE (Standards: Low Voltage Directive IEC EN 62040-1; EMC Directive IEC EN 62040-2; classification IEC EN 62040-3) |                              |

© 2025 Tecnoware Power Systems. The technical data may change without prior notice.

### Accessories

| Model                       | Code         |
|-----------------------------|--------------|
| Parallel Kit                | FGCKITPARCA1 |
| Internal SNMP               | FGCNETAG7    |
| Dry Contact DB9 Interface   | FGCEVODSDRY3 |
| Dry Contact 9 PIN Interface | FGCEVODSDRY4 |
| ModBus RS485 Interface      | FGCMODBUS    |



# AUTOMATIC TRANSFER SWITCH

16A-30A



- 1 Input switch 2 Fuse breaker 3 USB Port 4 RS-232 Port 5 Source preference selector 6 Priority setting LED 7 Input source availability LED 8 Output source LED 9 Fault LED 10 Mute button 11 Slot for interface SNMP 12 Status Contact port 13 Output sockets (IEC 320 C13) 14 Output sockets (IEC 320 C19) 15 Input connectors (IEC 16A) 16 Input Terminal Block 17 Output Terminal Block

## Main Specifications

- Powered by two separately independent power sources
- Dual power supply for redundancy
- Preferred source selection on front panel
- 19" rack design (1U)
- USB and RS232 communications ports
- UPS Management Software ATS Monitor compatible with Windows

## Specifications

| ATS Model                   | AUTOMATIC TRANSFER SWITCH 16A               |  | AUTOMATIC TRANSFER SWITCH 30A   |  |
|-----------------------------|---|--|---|--|
| Code                        | FGCATS1601MM                                |  | FGCATS3001MM  |  |
| Dimension (WxHxD)           | 48,3 (19") x 4,4 (1U) x 33 cm               |  |   |  |
| Weight                      | 5 Kg  |  | 6 Kg  |  |
| Communication port          | USB/RS-232                                  |  |   |  |
| Input                       |   |  |   |  |
| Input Voltage               | 230 Vac                                     |  |   |  |
| Input Voltage range         | 180 Vac - 258 Vac                           |  |   |  |
| Nominal frequency           | 50/60 Hz                                    |  |   |  |
| Maximum Input Current       | 16A   |  | 30A   |  |
| Input connectors            | 2 x IEC 320 C20                             |  | 2 x Terminal Block  |  |
| Output                      |   |  |   |  |
| Nominal voltage             | 230 Vac                                     |  |   |  |
| Maximum Output Current      | 10 A for IEC 320 C13 - 16 A for IEC 320 C19 |  | 30 A for Terminal Block - 10 A for IEC 320 C13 - 16 A for IEC 320 C19 |  |
| Output connectors           | 8 x IEC 320 C13 - 1 x IEC 320 C19           |  | 1 x Terminal Block - 4 x IEC 320 C13 - 1 x IEC 320 C19                |  |
| Transfer time               | 9-12 ms (typical), 16 ms max                |  |   |  |
| Environmental specification |   |  |   |  |
| Working temperature         | From -5 to 45 °C                            |  |   |  |
| Humidity                    | < 95% without condensation                  |  |   |  |
| Certifications              | CE  |  |   |  |

© 2025 Tecnoware Power Systems. The technical data may change without prior notice.

## Accessories

| Model                 | Code      |
|-----------------------|-----------|
| Internal SNMP for ATS | FGCNETAG9 |



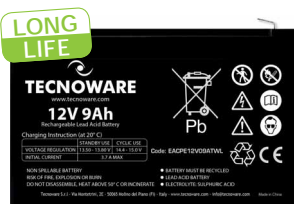
Power Battery 12V 5Ah



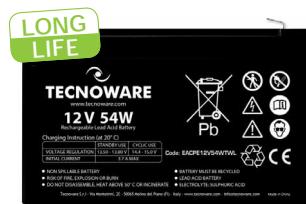
Power Battery 12V 7.2Ah



Power Battery 12V 9Ah



Power Battery 12V 9Ah Long Life



Power Battery 12V 54W Long Life

## Main Specifications

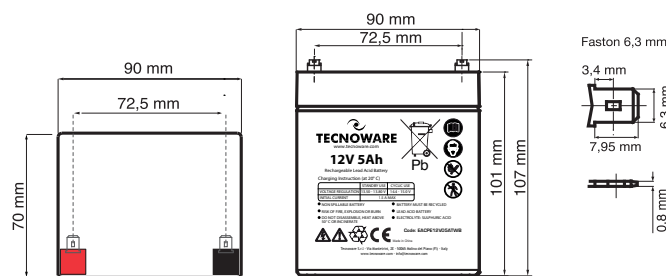
- UPS, emergency power systems, data processing centers, alarm and security systems
- Sealed lead acid batteries
- No maintenance
- 12Vdc monoblock
- Batteries designed for regular, long and deep, discharge
- High cyclical performance
- Easy installation
- No hazardous for transport by road/rail/sea/air
- Individually packaged

SINGLE  
PACKAGING

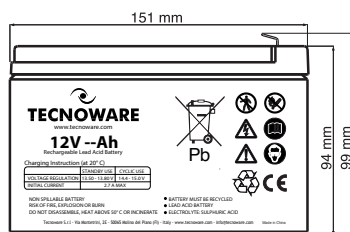
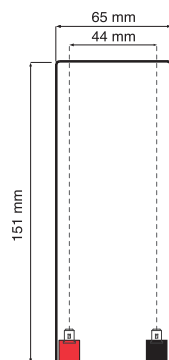
## Specifications

| Model                            | Power Battery 12V 5Ah-7.2Ah-9Ah-54W  |                          |                          |                          |                            |
|----------------------------------|--|--------------------------|--------------------------|--------------------------|----------------------------|
| Code                             | EACPE12V05ATWB   | EACPE12V7A2TWP           | EACPE12V09ATWP           | EACPE12V09ATWL           | EACPE12V54WTWL             |
| Box                              | Single packaging   |                          |                          |                          |                            |
| Nominal voltage                  | 12Vdc  |                          |                          |                          |                            |
| Capacity                         | 5Ah  | 7.2Ah                    | 9Ah                      | 9Ah                      | 54W                        |
| Dimension WxHxD                  | 90 x 101 x 70 mm   | 151 x 94 x 65 mm         |                          |                          |                            |
| Weight                           | 1,65 Kg  | 2,22 Kg                  | 2,65 Kg                  | 2,87 Kg                  | 2,87 Kg                    |
| Terminal type                    | Faston 6,35mm  | Faston 6,35mm            | Faston 6,35mm            | Faston 6,35mm            | Faston 6,35mm              |
| Internal resistance              | Approx 26 mΩ full charge   | Approx 28 mΩ full charge | Approx 19 mΩ full charge | Approx 13 mΩ full charge | Approx 12,3 mΩ full charge |
| Lifespan                         | 5 years  |                          |                          |                          |                            |
| Container material               | ABS  |                          |                          |                          |                            |
| Electrical Specifications        |  |                          |                          |                          |                            |
| Stand-by voltage                 | 13,50-13,80Vdc a 25°C  |                          |                          |                          |                            |
| Cycle voltage                    | 14,4-15,0Vdc a 25°C  |                          |                          |                          |                            |
| Initial current charging         | 1,25A Max  | 1,8A Max                 | 2,7A Max                 | 2,9A Max                 | 3,7A Max                   |
| Maximum charging current         | 1,5A Max   |                          | 2,6A Max                 | 2,8A Max                 | 3,5A Max                   |
| Charging time                    | 6-8 hours  |                          |                          |                          |                            |
| Maximum discharge current        | 75A (5s)   | 105A (5s)                | 135A (5s)                | 140A (5s)                | 142 A (5s)                 |
| Environmental specification      |  |                          |                          |                          |                            |
| Working temperature              | Discharge: from -15 to 50°C, Charge: from 0 to 40°C, Storage: from -15 to 40°C |                          |                          |                          |                            |
| Nominal working temperature      | 25±3°C   |                          |                          |                          |                            |
| Capacity affected by temperature | 40°C: 103%, 25°C: 100%, 0°C: 86%   |                          |                          |                          |                            |
| Certifications                   | CE (Regulation 1542/2023 EU)   |                          |                          |                          |                            |

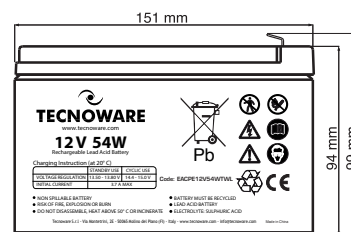
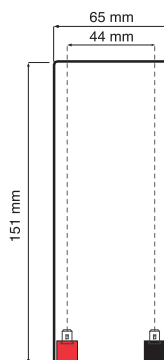
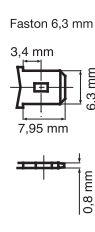
© 2025 Tecnoware Power Systems. The technical data may change without prior notice.



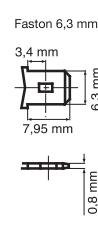
Power Battery 12V 5Ah

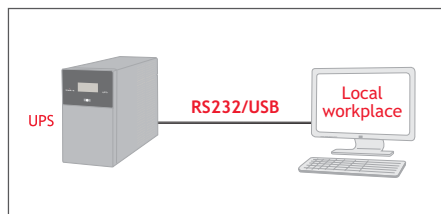


Power Battery 12V 7.2Ah-9Ah-9Ah Long Life



Power Battery 12V 54W





The communication software is downloadable free from [www.tecnoware.com](http://www.tecnoware.com). Installing it on your computer can be controlled in real time, through the RS232 serial port or USB, the status of the power supply, the operation of the UPS, the charge level and the efficiency of the batteries.

In the event of anomalies in the power supply, the software will automatically proceed to save all the open files and will then close down the operating system and switch off the computer in an ordered manner, before the autonomy runtime of the UPS expires.

In addition, the software monitors, analyses and records a vast range of parameters related to the operation of the UPS. It visualises in real time, in the form of a graph, the input/output voltage, frequency and charge connected to the UPS, the working temperature and the charge level of the batteries.

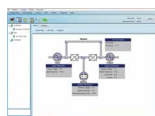
#### UPS Management for Windows



Measures parameters



Graphics



Main window

#### UPS Management for Mac OS X



Measures parameters



Graphics



Main window

#### Software Compatibility

|                             | UPS Management <sup>1</sup> | ATS Monitor <sup>2</sup> |
|-----------------------------|-----------------------------|--------------------------|
| Era Plus 600-2.600          | •                           |                          |
| Era Plus Strip 1.000        | •                           |                          |
| Era LCD RM 1.200            | •                           |                          |
| Era Plus Active 1.200-1.600 | •                           |                          |
| Exa PLUS 1.100-1.600-2.100  | •                           |                          |
| Exa PLUS 3.000-4.500        | •                           |                          |
| Evo DSP Plus 1.200-5.500    | •                           |                          |
| Evo DSP Plus RT 1.200-3.600 | •                           |                          |
| Evo DSP Plus 6-10           | •                           |                          |
| Evo DSP Plus RM 6-10        | •                           |                          |
| Evo DSP Plus Modular 20-300 | •                           |                          |
| Evo DSP Plus Modular 20-140 | •                           |                          |
| Evo DSP Plus Modular 70-100 | •                           |                          |
| Evo DSP Plus TM/TT 10-200   | •                           |                          |
| ATS                         |                             | •                        |

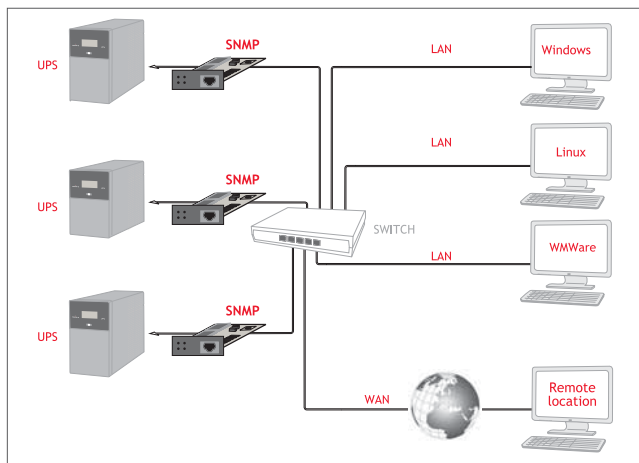
1) Compatible with Windows, Mac OS X, Unix, Linux, etc

2) Compatible with Windows

## SNMP Interface

(connection through RJ45 LAN network)

The SNMP (Simple Network Management Protocol) interface enables connection and configuration of the UPS in a LAN computer network. Each SNMP interface provides the necessary software for the monitoring and management of the UPS via LAN, compatible with most Operating Systems.

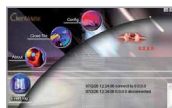


#### SNMP Interface Compatibility

|                             | FGCNETAG7 | FGCNETAG9 |
|-----------------------------|-----------|-----------|
| Evo DSP Plus 1.200-5.500    | •         |           |
| Evo DSP Plus RT 1.200-3.600 | •         |           |
| Evo DSP Plus 6-10           | •         |           |
| Evo DSP Plus RM 6-10        | •         |           |
| Evo DSP Plus Modular 20-300 | •         |           |
| Evo DSP Plus Modular 20-300 | •         |           |
| Evo DSP Plus Modular 20-140 | •         |           |
| Evo DSP Plus Modular 70-100 | •         |           |
| Evo DSP Plus TM/TT 10-200   | •         |           |
| ATS                         |           | •         |



IP configuration



Main window

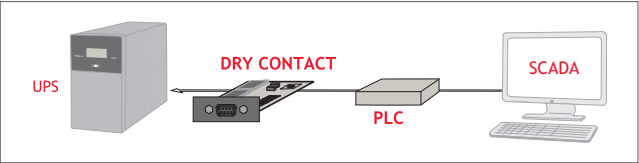


NetAgent Web Manager



Dry Contact board  
(Dry Contact)

Dry Contact board provides a set of relay contacts (Dry Contacts) able to identify UPS alarm status as battery mode, discharged battery, active bypass or general alarm. It can be used to interface with the systems that manage industrial processes.

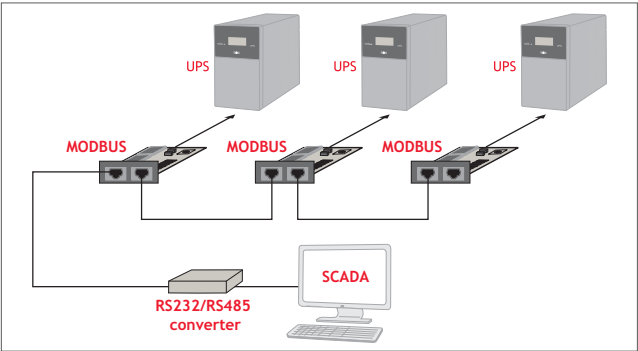


Dry Contact Interface Compatibility

|                             | FGCEVODSDRY3 | FGCEVODSDRY4 | STANDARD INTERFACE |
|-----------------------------|--------------|--------------|--------------------|
| Evo DSP Plus 1.200-5.500    | •            | •            |                    |
| Evo DSP Plus RT 1.200-3.600 | •            | •            |                    |
| Evo DSP Plus 6-10           | •            | •            |                    |
| Evo DSP Plus RM 6-10        | •            | •            |                    |
| Evo DSP Plus Modular 20-300 | •            | •            |                    |
| Evo DSP Plus Modular 20-140 | •            | •            |                    |
| Evo DSP Plus Modular 70-100 | •            | •            |                    |
| Evo DSP Plus TM/TT 10-200   | •            | •            |                    |
| ATS                         |              |              | •                  |

MODBUS RS485 board

The MODBUS RS485 interface allows UPS and PC connection trough MODBUS protocol. It has MODBUS RTU protocol, includes reading and writing registers and provides the RS485/RS232 interface.



MODBUS RS485 Interface Compatibility

|                             | FGCMODBUS |
|-----------------------------|-----------|
| Evo DSP Plus 1.200-5.500    | •         |
| Evo DSP Plus RT 1.200-3.600 | •         |
| Evo DSP Plus 6-10           | •         |
| Evo DSP Plus RM 6-10        | •         |
| Evo DSP Plus Modular 20-300 | •         |
| Evo DSP Plus Modular 20-140 | •         |
| Evo DSP Plus Modular 70-100 | •         |
| Evo DSP Plus TM/TT 10-200   | •         |



MODBUS Manager



Stabilizer Power REG 1.000 VA

- 1 On/Off switch 2 Led AVR/Power 3 AC input cable 4 Input fuse 5 Stabilized output socket 6 RJ11 port

### Main Specifications

- Domestic users, Lighting Systems, Industrial Processes, Communications, Electromedical equipment
- High stabilization speed
- High Efficiency
- No brownouts stabilization
- Do not introduce harmonic distortion
- Management changes from 0 to 100% load

### Specifications

| Model                              | STABILIZER POWER REG 1.000 |
|------------------------------------|----------------------------|
| Code                               | FSTELPRE1000M              |
| Nominal Power                      | 1.000 VA                   |
| Active Power                       | 800 W                      |
| Power Factor                       | 0,8                        |
| Technology                         | Electronic stabilization   |
| Telephone / Modem Line Protection  | RJ11                       |
| Dimension WxHxD                    | 16,1x8,6x16,6 cm           |
| Dimension (with packing) WxHxD     | 19,1x11,9x23,1 cm          |
| Weight                             | 2 Kg                       |
| <b>Input</b>                       |                            |
| Number of phases                   | 1Ph+N                      |
| Nominal voltage                    | 230Vac                     |
| Input voltage range                | 180Vac-264 Vac             |
| Nominal frequency                  | 50 Hz                      |
| <b>Output</b>                      |                            |
| Number of phases                   | 1Ph+N                      |
| Nominal voltage                    | 230Vac                     |
| Voltage regulation                 | ±6%                        |
| Nominal frequency                  | 50 Hz                      |
| <b>Environmental specification</b> |                            |
| Working temperature                | From 0 to 55 °C            |
| Humidity                           | < 95% without condensation |
| Maximum altitude                   | 3000 m                     |
| IP protection                      | IP20                       |
| Certifications                     | CE                         |

© 2025 Tecnoware Power Systems. The technical data may change without prior notice.



- 1 On/Off switch 2 Input Voltage Display 3 Output Voltage Display 4 Start Up Delay time selector stabilization function: Delay 3 minutes, Undelay 10 seconds  
5 Input Voltage range selector 6 Led Power - AVR - Overvoltage/undervoltage 7 AC input cable 8 Stabilized output socket 9 Input socket

Main Specifications

- Domestic users, Lighting Systems, Industrial Processes, Communications, Electromedical equipment
- High stabilization speed
- High Efficiency
- No brownouts stabilization
- Do not introduce harmonic distortion
- Management changes from 0 to 100% load

Specifications

| Model   | STABILIZER POWER REG 2.000-3.000           |               |
|---|--|---------------|
| Code  | FSTELPRE2000M                              | FSTELPRE3000M |
| Nominal Power                                       | 2.000 VA                                   | 3.000 VA      |
| Active Power  | 1.600 W                                    | 2.400 W       |
| Power Factor  | 0,8  |               |
| Technology  | Electronic stabilization                   |               |
| Start Up Delay time selector stabilization function | Selectable 3 minutes-10 seconds            |               |
| Dimension WxHxD                                     | 13x18x24 cm                                | 15x20x30 cm   |
| Dimension (with packing) WxHxD                      | 19x24x39 cm                                | 23x27x33 cm   |
| Weight  | 6,6Kg                                      | 8,6 Kg        |
| Input   |  |               |
| Number of phases                                    | 1Ph+N                                      |               |
| Nominal voltage                                     | 230Vac                                     |               |
| Input voltage range                                 | 110Vac-280Vac o 150Vac-270Vac (selectable) |               |
| Nominal frequency                                   | 50/60 Hz                                   |               |
| Output  |  |               |
| Number of phases                                    | 1Ph+N                                      |               |
| Nominal voltage                                     | 230Vac                                     |               |
| Voltage regulation                                  | ±6%  |               |
| Nominal frequency                                   | 50/60 Hz                                   |               |
| Environmental specification                         |  |               |
| Working temperature                                 | From 0 to 55 °C                            |               |
| Humidity  | < 95% without condensation                 |               |
| Maximum altitude                                    | 3000 m                                     |               |
| IP protection                                       | IP20                                       |               |
| Certifications                                      | CE   |               |

© 2025 Tecnoware Power Systems. The technical data may change without prior notice.



## Main Specifications

- Domestic users, Lighting Systems, Industrial Processes, Communications, Electromedical equipment
- High stabilization speed
- High Efficiency
- No brownouts stabilization
- Do not introduce harmonic distortion
- Management changes from 0 to 100% load
- Multifunction display with visualization and setting operating parameters

## Specifications

| Model                          | SERVO-ASSISTED SINGLE-PHASE STABILIZERS WITH MICROPROCESSOR ELECTRONIC CONTROL 4.5-18 |             |            |             |
|--------------------------------|---|-------------|------------|-------------|
| Code                           | FSTESM4K5M  | FSTESM7K5M  | FSTESM10KM | FSTESM18KM  |
| Nominal Power                  | 4,5 KVA   | 7,5 KVA     | 10 KVA     | 18 KVA      |
| Active Power                   | 3,6 KW  | 6 KW        | 8 KW       | 14.4 KW     |
| Power Factor                   | 0,8   |             |            |             |
| Technology                     | Servo-Assisted with Microprocessor Electronic Control                                 |             |            |             |
| Dimension WxHxD                | 24,3x28x34,3 cm   | 30x34x40 cm |            | 40x60x42 cm |
| Dimension (with packing) WxHxD |   | 36x50x50 cm |            | 47x77x51 cm |
| Weight                         | 20 Kg   | 24 Kg       | 36 Kg      | 80 Kg       |
| Input                          |   |             |            |             |
| Number of phases               | 1Ph+N   |             |            |             |
| Nominal voltage                | 220/230/240Vac (selectable)   |             |            |             |
| Input voltage range            | 160Vac-270Vac   |             |            |             |
| Nominal frequency              | 50/60 Hz  |             |            |             |
| Output                         |   |             |            |             |
| Number of phases               | 1Ph+N   |             |            |             |
| Nominal voltage                | 220/230/240Vac (selectable)   |             |            |             |
| Voltage stability              | ±1%   |             |            |             |
| Voltage regulation             | 12 mSec/Volt  |             |            |             |
| Performance                    | >97%  |             |            |             |
| Load variation                 | From 0% to 100%   |             |            |             |
| Overload                       | 150%  |             |            |             |
| Nominal frequency              | 50/60 Hz  |             |            |             |
| Environmental specification    |   |             |            |             |
| Working temperature            | From 0 to 55 °C   |             |            |             |
| Humidity                       | < 95% without condensation  |             |            |             |
| Maximum altitude               | 3000 m  |             |            |             |
| IP protection                  | IP20  |             |            |             |
| Certifications                 | CE  |             |            |             |

© 2025 Tecnoware Power Systems. The technical data may change without prior notice.

*Together on*


Three-Phase 9KVA  
Three-Phase 15KVA  
Three-Phase 25KVA  
Three-Phase 50KVA

Three-Phase 100KVA



Multifunction LCD display

1 Multifunction display 2 Operating status indicator 3 Input voltage switch 4 Bypass switch 5 Input/output terminal box

## Main Specifications

- Domestic users, Lighting Systems, Industrial Processes, Communications, Electromedical equipment
- High stabilization speed
- High Efficiency
- No brownouts stabilization
- Do not introduce harmonic distortion
- Management changes from 0 to 100% load
- Multifunction display with visualization and setting the operating parameters

## Specifications

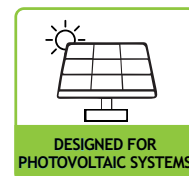
| Model                          | SERVO-ASSISTED THREE-PHASE STABILIZERS WITH MICROPROCESSOR ELECTRONIC CONTROL 9-100 |                   |              |              |  |
|--------------------------------|---|-------------------|--------------|--------------|--|
| Code                           | FSTESM9KT   | NEW<br>FSTESM15KT | FSTESM25KT   | FSTESM50KT   | FSTESC100KT                                |
| Nominal Power                  | 9 KVA   | 15 KVA            | 25 KVA       | 50 KVA       | 100 KVA                                    |
| Active Power                   | 7.2 KW  | 12 KW             | 20 KW        | 40 KW        | 80 KW                                      |
| Power Factor                   | 0,8   |                   |              |              |  |
| Technology                     | Servo-assisted with Microprocessor Electronic Control                               |                   |              |              | SCR with Microprocessor Electronic Control |
| Dimension WxHxD                | 34x77x40 cm   | 34x77x40 cm       | 40x85x52 cm  | 45x115x85 cm | 52x119x84 cm                               |
| Dimension (with packing) WxHxD | 39x92x48 cm   | 39x92x48 cm       | 45x100x60 cm | 50x130x93 cm | 59x145x96 cm                               |
| Weight                         | 80 Kg   | 92 Kg             | 107 Kg       | 157 Kg       | 356 Kg                                     |
| Input                          |   |                   |              |              |  |
| Number of phases               | 3Ph+N   |                   |              |              |  |
| Nominal voltage                | 380/400/415Vac (selectable)   |                   |              |              |  |
| Input voltage range            | 260Vac-470Vac   |                   |              |              |  |
| Nominal frequency              | 50/60 Hz  |                   |              |              |  |
| Phase imbalance                | 100%  |                   |              |              |  |
| Output                         |   |                   |              |              |  |
| Number of phases               | 3Ph+N   |                   |              |              |  |
| Nominal voltage                | 380/400/415Vac (selectable)   |                   |              |              |  |
| Voltage stability              | ±1%   |                   |              |              |  |
| Voltage regulation             | 12 mSec/Volt  |                   |              |              | 4 mSec/Volt                                |
| Performance                    | >97%  |                   |              |              |  |
| Load variation                 | From 0% to 100%   |                   |              |              |  |
| Overload                       | 150%  |                   |              |              |  |
| Nominal frequency              | 50/60 Hz  |                   |              |              |  |
| Environmental specification    |   |                   |              |              |  |
| Working temperature            | From 0 to 55 °C   |                   |              |              |  |
| Humidity                       | < 95% without condensation  |                   |              |              |  |
| Maximum altitude               | 3000 m  |                   |              |              |  |
| IP protection                  | IP20  |                   |              |              |  |
| Certifications                 | CE  |                   |              |              |  |

© 2025 Tecnoware Power Systems. The technical data may change without prior notice.



Single-Phase 7.5KVA  
Single-Phase 10KVA

1 Multifunction Display 2 Input voltage switch 3 Bypass switch 4 Input/output terminal box



## Main Specifications

- Bidirectional, designed for Photovoltaic Systems with voltage stabilization on both mains input and output side
- For utenze domestic users, Lighting Systems
- High stabilization speed
- High Efficiency
- No brownouts stabilization
- Do not introduce harmonic distortion
- Management changes from 0 to 100% load
- Multifunction display with visualization and setting operating parameters

## Specifications

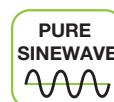
| Model                          | SERVO-ASSISTED BIDIRECTIONAL SINGLE-PHASE STABILIZERS WITH MICROPROCESSOR ELECTRONIC CONTROL 7.5-10 |              |
|--------------------------------|---|--------------|
| Code                           | FSTESM7K5MBD  | FSTESM10KMBD |
| Nominal Power                  | 7.5 KVA   | 10 KVA       |
| Active Power                   | 6 KW  | 8 KW         |
| Power Factor                   | 0,8   |              |
| Technology                     | Servo-Assisted bidirectional with Microprocessor Electronic Control                                 |              |
| Dimension WxHxD                | 30x34x40 cm   |              |
| Dimension (with packing) WxHxD | 36x50x50 cm   |              |
| Weight                         | 24 Kg   | 36 Kg        |
| Input                          |   |              |
| Number of phases               | 1Ph+N   |              |
| Nominal voltage                | 220/230/240Vac (selectable)   |              |
| Input voltage range            | 160Vac-270Vac   |              |
| Nominal frequency              | 50/60 Hz  |              |
| Output                         |   |              |
| Number of phases               | 1Ph+N   |              |
| Nominal voltage                | 220/230/240Vac (selectable)   |              |
| Voltage stability              | ±3%   |              |
| Voltage regulation             | 12 mSec/Volt  |              |
| Performance                    | >97%  |              |
| Load variation                 | From 0% to 100%   |              |
| Overload                       | 150%  |              |
| Nominal frequency              | 50/60 Hz  |              |
| Environmental specification    |   |              |
| Working temperature            | From 0 to 55 °C   |              |
| Humidity                       | < 95% without condensation  |              |
| Maximum altitude               | 3000 m  |              |
| IP protection                  | IP20  |              |
| Certifications                 | CE  |              |

© 2025 Tecnoware Power Systems. The technical data may change without prior notice.





**SILENT**  
**INVERTER**  
Technology



#### Main Specifications

- Silent Inverter Generator
- Eco Speed Control system to optimize consumption and reduce noise
- Portable and compact
- OHV 4-stroke engine
- Pure Sinewave output voltage
- Fuel tank for 10 hours at 50% load
- Low oil alert
- Overload protection
- Battery Charger
- Dual AC and DC 12V output



#### Specifications

| Model                          | SILENT INVERTER GENERATOR 2.200                |
|--------------------------------|--|
| Code                           | FGEINV2200M                                    |
| Starting System                | Manual   |
| Max reactive power             | 2.200 VA                                       |
| Max active power               | 2.000 W  |
| Power factor                   | 0,9  |
| Rated power                    | 1.800 W  |
| Phase                          | Single Phase                                   |
| Technology                     | Inverter                                       |
| Rated voltage                  | 230 Vac  |
| Rated frequency                | 50 Hz  |
| DC output                      | 12Vdc - 8A                                     |
| AC output                      | 2 Schuko 16A                                   |
| Insulated grade                | F  |
| Fuel tank capacity             | 4L   |
| Fuel                           | Unleaded gasoline                              |
| Noise level at 7 m             | 58-62 dBA                                      |
| Weight                         | 21,5 Kg  |
| Dimension WxHxD                | 48x39x28 cm                                    |
| Dimension (with packing) WxHxD | 49x40x29cm                                     |
| Certifications                 | CE   |
| <b>Engine</b>                  |  |
| Model                          | QL80   |
| Type                           | Single-cylinder forced air-cooled OHV 4-stroke |
| Displacement                   | 79,7 cc  |
| Power                          | 6,5 HP   |
| Rated speed                    | 3000 RPM                                       |
| Ignition system                | TCI (transistor ignition)                      |
| Lubrication oil (not included) | 0,35 L SAE 10W-30                              |
| Air filter type                | Dry  |
| European emission standards    | Euro 5   |

© 2025 Tecnoware Power Systems. The technical data may change without prior notice.





Gasoline Generator 3.200 VA Recoil Starting System



Gasoline Generator 4.200 VA Electrical Starting System



Gasoline Generator 7.800 VA Electrical Starting System



Gasoline Generator 9.200 VA Electrical/Automatic Starting System

## Main Specifications

- OHV 4-stroke engine
- Metal fuel tank for 10 hours at 50% load
- Low oil alert
- AVR and overload protection
- Ready for External Automatic Transfer Switch (only r Gasoline Generator 4.200 VA and Gasoline Generator 9.200 VA)
- Battery Charger (only for electrical model)
- Dual AC and DC 12V output
- Low operation noise



## Specifications

| Model                                     | GASOLINE GENERATOR 3.200-4.200-7.800-9.200 |                  |  |                  |                                |
|---|--|------------------|--|------------------|--------------------------------|
| Code                                      | FGE3200M                                   | FGE4200E         | FGE4200EA                                    | FGE7800E         | FGE9200EA                      |
| Starting System                           | Manual                                     | Electrical       | Electrical/Automatic                         | Electrical       | Electrical/Automatic           |
| Max reactive power                        | 3.200 VA                                   | 4.200 VA         | 4.200 VA                                     | 7.800 VA         | 9.200 VA                       |
| Max active power                          | 2.200 W                                    | 3.000 W          | 3.000 VA                                     | 5.500 W          | 6.500 W                        |
| Power factor                              |  |                  | 0,7  |                  |                                |
| Rated power                               | 2.000 W                                    | 2.800 W          | 2.800 W                                      | 5.000 W          | 6.000 W                        |
| Phase                                     |  |                  | Single Phase                                 |                  |                                |
| Voltage regulator                         |  |                  | AVR  |                  |                                |
| Rated voltage                             |  |                  | 230 Vac                                      |                  |                                |
| Rated frequency                           |  |                  | 50 Hz  |                  |                                |
| DC output                                 |  |                  | 12Vdc - 8,3A                                 |                  |                                |
| AC output sockets                         |  | 2 Schuko 16A     |  | 2 IEC 309 16A    | 1 IEC 309 32A                  |
| Ready for external Gasoline Generator ATS | -  |                  | Yes - Code FGEATS9200 (optional)             | -                | Yes Code FGEATS9200 (optional) |
| Insulated grade                           |  |                  | F  |                  |                                |
| Fuel tank capacity                        |  | 15L              |  | 25L              |                                |
| Fuel                                      |  |                  | Unleaded gasoline                            |                  |                                |
| Noise level at 7 m                        |  | 68-72 dBA        |  |                  | 74-78 dBA                      |
| Hand rails and wheels                     |  | -                |  |                  | Included                       |
| Weight                                    | 41,5 Kg                                    |                  | 48 Kg  | 82 Kg            | 85 Kg                          |
| Dimension WxHxD                           |  | 43x42x63 cm      |  |                  | 52,5x54,5x69,5 cm              |
| Dimension (with packing) WxHxD            |  | 44x44x64 cm      |  |                  | 53,5x56,5x70,5 cm              |
| Certifications                            |  |                  | CE   |                  |                                |
| Engine                                    |  |                  |  |                  |                                |
| Model                                     | TW168F                                     |                  | TW170F                                       | TW188F           | TW190F                         |
| Type                                      |  |                  | Single-cylinder forcedair-cooled OHV 4-strok |                  |                                |
| Displacement                              | 196 cc                                     |                  | 210 cc                                       | 389 cc           | 420 cc                         |
| Power                                     | 6,5 HP                                     |                  | 7 HP   | 13 HP            | 15 HP                          |
| Rated speed                               |  |                  | 3000 RPM                                     |                  |                                |
| Ignition system                           |  |                  | TCI (transistor Ignition)                    |                  |                                |
| Lubrication oil (not included)            |  | 0,6 L SAE 10W-30 |  | 1,1 L SAE 10W-30 |                                |
| Air filter type                           |  |                  | A secco                                      |                  |                                |
| Starter battery                           | -  |                  | 12V 7,2 Ah                                   |                  | 12V 17 Ah                      |
| European emission standards               |  |                  | Euro 5                                       |                  |                                |

© 2025 Tecnoware Power Systems. The technical data may change without prior notice.

## Accessories

| Model   | Code       |
|---|------------|
| External Gasoline Generator ATS for Generator FGE4200EA and FGE9200EA | FGEATS9200 |



Gasoline Generator ATS checks the AC mains and charges the Generator battery. In the event of a blackout, it automatically starts the Generator engine and supplies the load with Generator power. When the AC mains returns it supplies the load with AC mains, charges the Generator battery and shutdown (with delay) the Generator engine.

- 1 AC mains indicator 2 Generator ON indicator 3 Automatic Starting System active indicator 4 Failure indicator 5 Manual/Automatic Starting System selector  
6 Generator Interface connector 7 Terminal Block for AC Power from Generator 8 Terminal Block for AC Power from AC mains  
9 Terminal Block for AC Power to load 10 Metal hooks for wall mounting

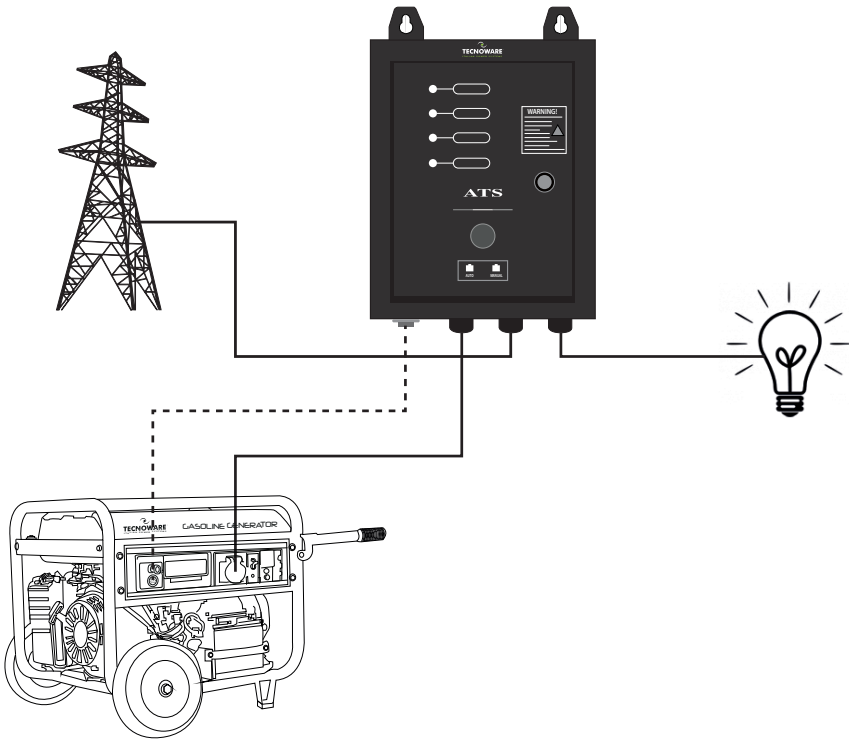
Main Specifications

- Metal case with hooks for wall mounting
- Metal door with key for Terminal Block access
- Generator Automatic Starting System
- Battery charger for Generator battery
- Selector for Manual/Automatic Starting
- 2m ATS/Generator connecting cable

Specifications

| ATS Model                          | GASOLINE GENERATOR ATS 45A                              |
|------------------------------------|---|
| Code                               | FGEATS9200  |
| Dimension (WxHxD)                  | 25x32x14 cm   |
| Weight                             | 4 Kg  |
| Communication interface            | Interface connector with Generator (2m cable, included) |
| Nominal Voltage                    | 230 Vac   |
| Nominal frequency                  | 50 Hz   |
| Maximum Current                    | 45A   |
| Input/Output connection            | Terminal Block  |
| <b>Environmental specification</b> |   |
| Working temperature                | From -5 to 45 °C  |
| Humidity                           | < 95% without condensation                              |
| Certifications                     | CE  |

© 2025 Tecnoware Power Systems. The technical data may change without prior notice.





ATA 1.200VA



ATA 3.500VA - ATA 5.500VA

**POWER  
FACTOR 1**
**SOLAR INPUT  
MPPT**

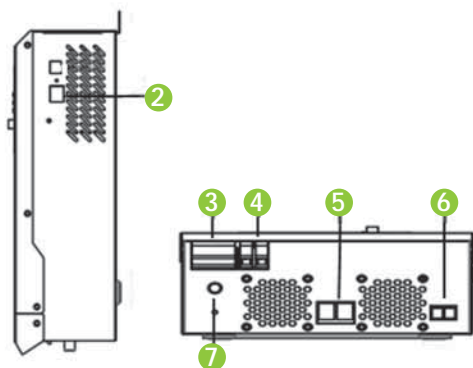
### Main Specifications

- Pure sinewave MPPT solar inverter
- Power Factor 1
- High PV Input Voltage Range
- Battery equalization function to optimize battery performance and extend lifecycle
- Selectable high power charging current
- Configurable AC/Solar input priority
- Compatible with generator
- Auto restart while AC is recovering
- Cold start function

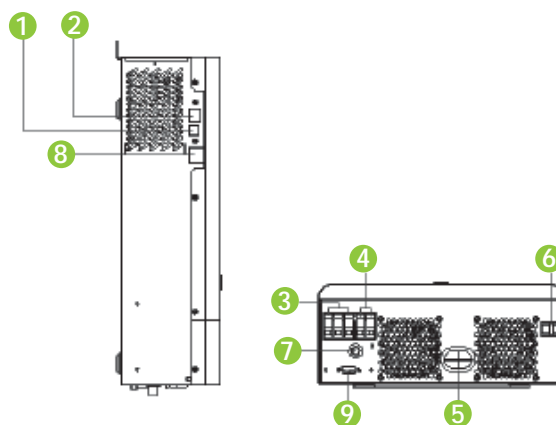
### Specifications

| Model                                 | ATA Solar Inverter 1.200  |                       | ATA Solar Inverter 3.500 | ATA Solar Inverter 5.500 |
|---------------------------------------|---|-----------------------|--------------------------|--------------------------|
| Code                                  | FINVATA1202   |                       | FINVATA3502              | FINVATA5502              |
| Rated Power                           | 1.200VA / 1.200W  |                       | 3.500VA / 3.500W         | 5.500VA / 5.500W         |
| Input                                 |   |                       |                          |                          |
| Voltage                               | 230 VAC   |                       |                          |                          |
| Selectable Voltage Range              | 170-280 VAC (For Personal Computers) ; 90-280 VAC (For Home Appliances) |                       |                          |                          |
| Frequency Range                       | 50 Hz/60 Hz (Auto sensing)  |                       |                          |                          |
| Output                                |   |                       |                          |                          |
| ACVoltage Regulation(Batt. Mode)      | 230VAC ± 5%   |                       |                          |                          |
| Surge Power                           | 2.000VA   | 7.000VA               |                          | 11.000VA                 |
| Efficiency (Peak)                     | 90% ~ 93%   | up to 93.5%           |                          |                          |
| Transfer Time                         | 10 ms (For Personal Computers) ; 20 ms (For Home Appliances)            |                       |                          |                          |
| Waveform                              | Pure sinewave   |                       |                          |                          |
| Battery                               |   |                       |                          |                          |
| Battery Voltage                       | 12 Vdc  | 24 Vdc                |                          | 48 Vdc                   |
| Floating Charge Voltage               | 13.5 Vdc  | 27 Vdc                |                          | 54 Vdc                   |
| Overcharge Protection                 | 16 Vdc  | 33 Vdc                |                          | 63 Vdc                   |
| Solar Charger & AC Charger            |   |                       |                          |                          |
| Solar Charger Type                    | MPPT  |                       |                          |                          |
| Maximum PV Array Open Circuit Voltage | 102 Vdc   | 500 Vdc               |                          |                          |
| Maximum PV Array Power                | 700 W   | 5500 W                |                          |                          |
| MPPT Range @ Operating Voltage        | 80~170 Vdc  | 120~450 Vdc           |                          |                          |
| Maximum Solar Charge Current          | 50 A  | 100 A                 |                          |                          |
| Maximum AC Charge Current             | 20 A  | 80 A                  |                          |                          |
| Maximum Charge Current                | 60 A  | 100 A                 |                          |                          |
| Physical                              |   |                       |                          |                          |
| Dimension, D x W x H (mm)             | 103x225x320   | 115x300x400           |                          |                          |
| Net Weight                            | 4.4 Kg  | 8.5 Kg                | 9 Kg                     |                          |
| Communication Interface               | RS232   | USB/RS232/Dry Contact |                          |                          |
| Environment                           |   |                       |                          |                          |
| Humidity                              | 5% to 95% Relative Humidity (Non-condensing)                            |                       |                          |                          |
| Operating Temperature                 | -10°C to 50°C   |                       |                          |                          |
| Storage Temperature                   | -15°C to 60°C   |                       |                          |                          |

© 2025 Tecnoware Power Systems. The technical data may change without prior notice.



ATA 1.200VA



ATA 3.500VA - ATA 5.500VA

- 1 USB communication port 2 RS-232 communication port 3 AC input 4 AC output 5 Battery input 6 PV input 7 Circuit breaker  
8 Generator dry contact 9 WIFI port

## Hybrid Operation

With mains and photovoltaic power.



With mains power.



With photovoltaic power.



With battery power.





## User Experience 4.0

**EVO DSP PLUS MODULAR HE**  
Reliable and efficient protection

**Different Power Solution**

- Business Solutions**  
Professional solutions for the protection and the efficiency of corporate environments.  
[View more](#)
- Smart Office Solutions**  
Products and articles to make the environment smart and always operational.  
[View more](#)
- Home Solutions**  
Solutions and products to make your home a safe and always protected place.  
[View more](#)
- Gaming Solutions**  
Products suitable for the consoles and videogames protection, for uninterrupted fun.  
[View more](#)

**UPS ERA PLUS 800 SCHUKO TOGETHER ON**  
UPS ERA PLUS 800 - Together ON, Schuko output, Power 800 VA, Backup time up to 15 min with 1 PC or 30 min with Modem Router. AVR regulation.  
**Warranty up to 5 years on electronics and up to 2 years on batteries by registering the product**  
[Click here to register your product](#)

| 800VA SCH  | 850VA SCH  | 1200VA SCH |
|------------|------------|------------|
| 1600VA IEC | 2000VA IEC | 2600VA IEC |

**REQUEST INFORMATION**

- Complete protection against blackout and power surges (overvoltages and undervoltages)
- Recommended for Personal Computers, DVB / Hbb and video surveillance systems, ADSL / fiber modem, switch / router, cash registers.
- Not suitable with power supplies with Active PFC circuit (Server, PC game, video game console, workstation, Mac computer, lamps and electric motors)
- AVR Automatic Voltage Regulator electronic circuit
- 2 Italy / Schuko output sockets and 1 Schuko input cable
- output socket protected against backflow
- output socket protected against overvoltages
- multifunction LED and on-off button

**User's Manual** **Product Details** **Certifications**

UPS ERA PLUS 800VA, 120/74h battery, 11kVA, 1 SCHUKO input fixed cable and 2 SCHUKO outputs protected against backflow, overvoltages and undervoltages. Line Interactive Plus technology. Dimensions 15x14x42.8 cm, weight 3.9 kg. Equipped with On/Off button with integrated multifunction LED with audible alarm for signaling the operating status. Designed to protect PC Office, DVB for video surveillance, ADSL, Fiber Modem / router, Cash Register. Totally silent.

**Technical data**

| Code          | FCERAPL800SCH |
|---------------|---------------|
| Nominal power | 800 VA        |
| Real power    | 400 W         |

Available in 10 languages, geolocation system and customer/user recognition, personalized browsing experience, dedicated commercial offer.

- E-Commerce User Oriented
- RMA Management Area
- Product Catalog with detailed technical data sheets
- Product Registration Area
- Tecnoware software download area

## Configurators: a direct line between the user and our operators

## People, behind your needs



## Together on

A page dedicated to the **Together On** project. Eco-friendly initiatives, virtuous information and collaboration models linked to the 10 0% Eco Friendly Tecnoware philosophy, to be shared with our Partners.



## Tecnoware Azienda Green Oriented



## To be Eco-Friendly

## www.tecnoware.com/togetheron

**Together on**  
People protecting the Planet **Together**

**Help us to help the environment!**

Tecnoware has always been a company sensitive to environmental issues. On the 22nd April 2015, World Earth Day, we created a new corporate philosophy called **"Together On"** an ideal that translates into a concrete path to make our reality a **100% Green Company**. ISO 14001 certification, Green Energy, Eco-sustainable products and Packaging, Sustainable Development projects are just some of the objectives achieved. We turn the attention ("ON") on the importance of the actions of each individual (reality, individual or company), but we are aware that only together as a community ("together") can we make a difference. To enhance and share our commitment in a "Green" key, we have created this section in which we will talk about our Projects, we will explain how Together On brand products are born and we will provide useful tips and advice on how to make everyday life **eco-friendly**.

**Together on**  
TOGETHER ON PRODUCTS

**TECNOWARE GREEN COMPANY**

**TO BE ECO-FRIENDLY**

Together On products are designed and manufactured according to the eco-sustainable philosophy. The Tecnoware Research & Development Department has always been committed to the environment.

Tecnoware was created in 1986 and since the first years of activity it could not be a member of the environmental movement. The Research and Development Department has always been committed to the environment.

All of us, today more than ever, are called to make our contribution to the environment. We want to be the first to offer a solution that is a step forward that does not cause harm to the environment.











Via Montetrini 2/E 50065 Molino del Piano - Firenze - Italy  
[www.tecnoware.com](http://www.tecnoware.com)

